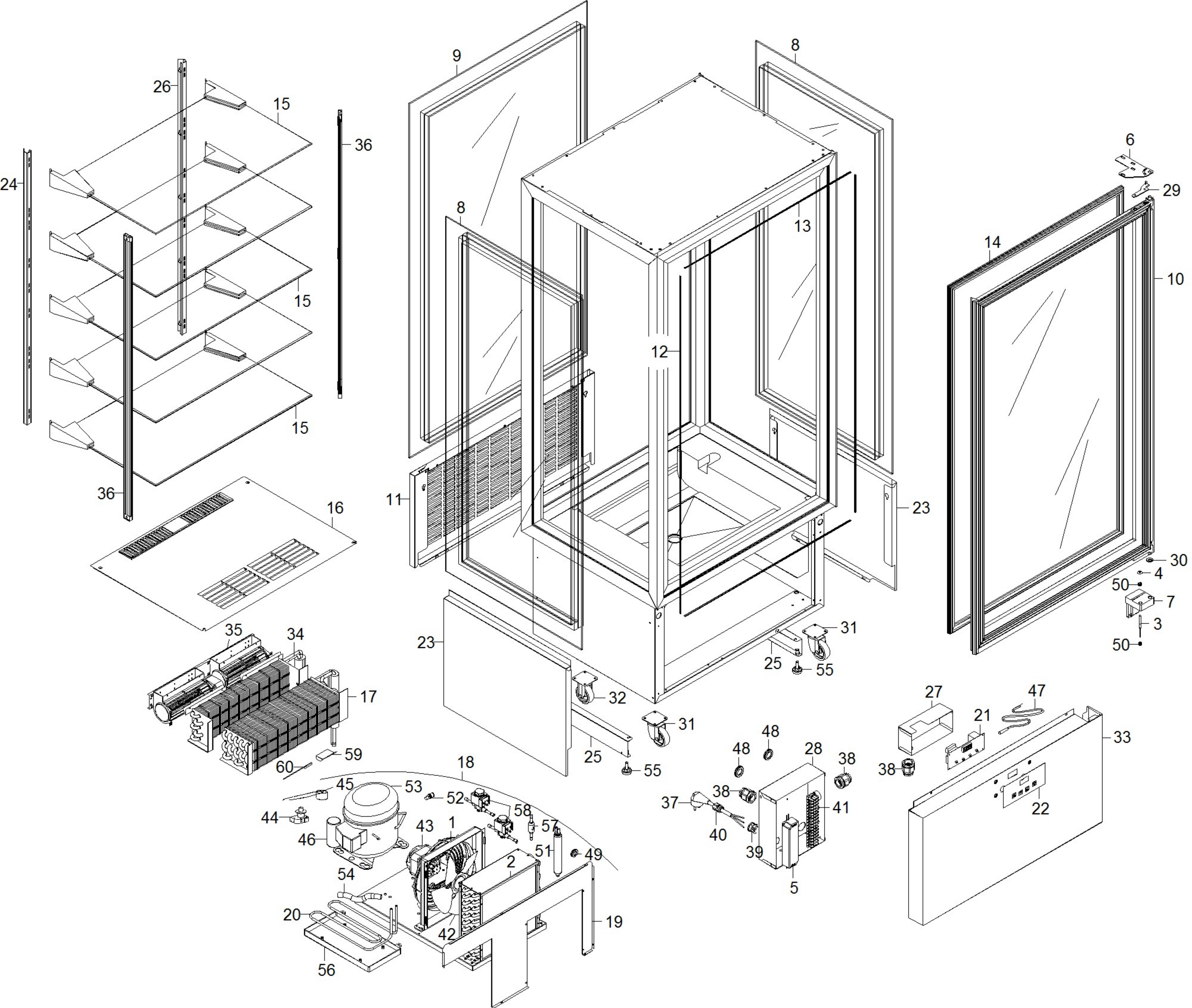




C8Q

Edition 20111013-



Pos	Code	Description	Info
001	3097420	FAN.PROT.	31/01/2010-
002	3098250	CONDEN.+BAFFLE	31/01/2010-
003	3107780	MICROSWITCH	31/01/2010-
004	3107790	MAGNET	31/01/2010-
005	3161390	POWER SUPPLY	31/01/2010-
006	3161580	TOP BRACKET	31/01/2010-
007	3181570	BOTTOM BRACKET	26/03/2010-
008	6036690	GLASS	02/02/2011-
009	6036670	GLASS	02/02/2011-
010	6036650	DOOR	31/01/2010-
011	3210510	REAR PANEL	13/10/2011-
012	3163370	FRAME	31/01/2010-
013	3163380	FRAME	31/01/2010-
014	3163390	DOOR GASKET	31/01/2010-
015	3163480	SHELF	31/01/2010-
016	3163500	BOTTOM PANEL	31/01/2010-
017	3179830	EVAPORATOR	31/01/2010-
018	3179850	MOTOR UNIT	31/01/2010-
019	3163610	CONVEYOR	31/01/2010-
020	3163620	PIPE COIL	31/01/2010-
021	3179240	ELECTRONIC CARD	31/01/2010-
022	3166150	SILK-SCREE.PANEL	31/01/2010-
023	3163910	SIDE PANEL	31/01/2010-
024	3164260	RACK	31/01/2010-
025	3181430	SUPPORT	31/01/2010-
026	3164680	RACK	31/01/2010-
027	3164710	CARD PROTECTION	31/01/2010-
028	3164720	PROTECTION PANEL BOARD	31/01/2010-
029	3164920	DOOR SUPPORT	31/01/2010-
030	3166060	WASHER	31/01/2010-
031	3166110	PIVOTING CASTOR	31/01/2010-
032	3166120	WHEEL	31/01/2010-
033	3171080	CONTROL BOARD	31/01/2010-
034	3179840	CONDENSER	31/01/2010-
035	3171190	TANGENTIAL FAN	31/01/2010-
036	6032950	LED MODULE	31/01/2010-
037	32A2200	POWER SUPPLY CABLE	31/01/2010-
038	32D0220	CABLE CLAMP Ø 16	31/01/2010-
039	32D0680	CABLE CLAMP	31/01/2010-
040	32D0700	CABLE CLAMP	31/01/2010-
041	32D0761	TERMINAL BOARD	31/01/2010-
042	32M2510	FAN	31/01/2010-
043	32M7210	FAN MOTOR	31/01/2010-
044	32V1220	RELAY	31/01/2010-
045	32V1370	ENGINE CUTOU	31/01/2010-
046	32V1500	CONDENSER	31/01/2010-
047	32V6010	EVAPORATOR PROBE NTC	31/01/2010-
048	32X0120	GROMMETØ 21	31/01/2010-
049	32X0140	GROMMET Ø13,5-Ø25	31/01/2010-
050	32X0340	GROMMET	31/01/2010-
051	33A0180	FILTER	31/01/2010-

Pos	Code	Description	Info
052	33A1200	AUXIL.VALVE	31/01/2010-
053	3179300	COMPRESSOR R404A	31/01/2010-
054	35X1640	DRAIN TRAP	31/01/2010-
055	36C0630	FOOT	31/01/2010-
056	36Z2380	TRAY	31/01/2010-
057	3179140	CHECK VALVE	31/01/2010-
058	3179990	DEFROST SOL.VALVE	31/01/2010-
059	3179480	PROTECTION	31/01/2010-
060	3179220	PROBE	31/01/2010-
061	32Z1090	THERMOSTAT	09/12/2010-