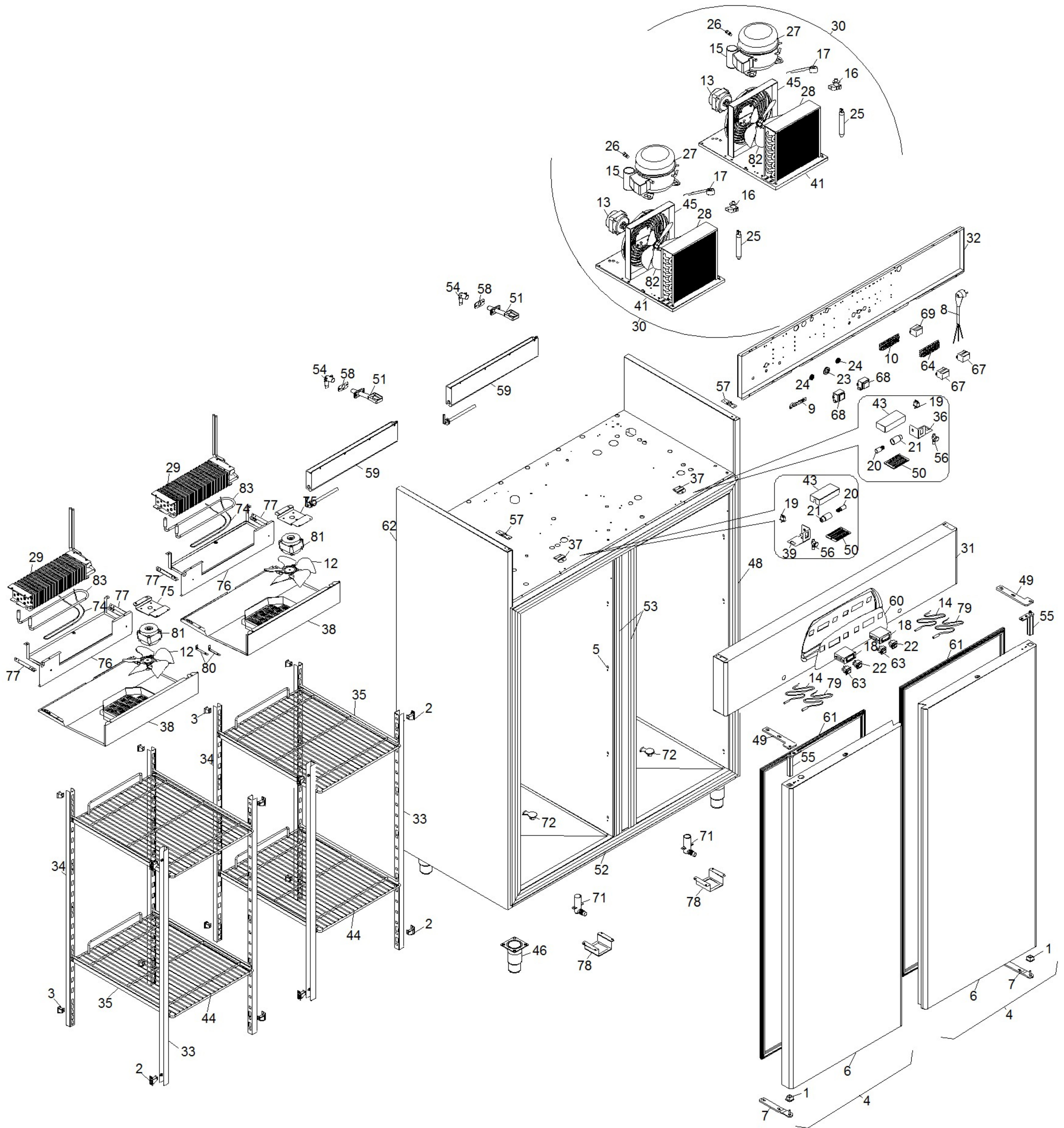




**CX120NN**

**Edition 20060905-**



Pos	Code	Description	Info
001	3178300	PLUG	15/12/2003-
002	3601350	RACK SUPPORT	15/12/2003-
003	3601360	RACK SUPPORT	15/12/2003-
004	60A3280	DOOR UNIT	03/02/2005-
005	30A6380	JOGGING PANEL	15/12/2003-
006	30F1510	FRIDGE DOOR	03/02/2005-
007	30T4510	BOTTOM BRACKET	15/12/2003-
008	32A2200	POWER SUPPLY CABLE	15/12/2003-
009	32D0020	CABLE CLAMP Ø 4 - 12	15/12/2003-
010	32D1750	TERMINAL BOARD	15/12/2003-
012	32M2510	FAN	15/04/2005-
013	32M7190	FAN MOTOR	15/04/2005-
014	32V6000	PROBE NTC	15/12/2003-
015	32Z7730	CONDENSER	15/04/2005-
016	32V8500	RELAY	15/04/2005-
017	32V1440	ENGINE CUTOUT	15/04/2005-
018	3049890	THERMOREGULATOR	15/04/2005-
019	32W3770	MICROSWITCH	15/12/2003-
020	32W3790	LIGHT	15/12/2003-
021	32W3800	LAMP-HOLDER	15/12/2003-
022	32W3970	BIPOLAR SWITCH	15/12/2003-
023	32X0120	GROMMET Ø 21	15/12/2003-
024	32X0140	GROMMET Ø13,5-Ø25	15/12/2003-
025	33A0180	FILTER	15/12/2003-
026	33A1200	AUXIL.VALVE	15/12/2003-
027	34E0940	COMPRESSOR	15/04/2005-
028	34E2980	CONDEN.+BAFFLE	15/04/2005-
029	34D4260	EVAPORATOR	15/12/2003-
030	34E2390	MOTOR UNIT	15/04/2005-
031	35L1090	CONTROL BOARD	15/12/2003-
032	35H4240	COMPONENT GUARD	20/02/2004-
033	35Y8570	RACK	15/12/2003-
034	35Y8560	RACK	15/12/2003-
035	35Y3430	GUIDE	15/12/2003-
036	35R9260	LOCK SUPPORT	15/12/2003-
037	3065480	SUPPORT	05/09/2006-
038	3AQ0140	EVAPORATOR GUARD	15/12/2003-
039	35U4230	LOCK SUPPORT	15/12/2003-
041	35W6370	ASSEMBLY TRAY	15/04/2005-
043	35Y3090	LAMP GUARD	15/12/2003-
044	36A5380	GRID	15/12/2003-
045	36Z0540	FAN.PROT.	15/04/2005-
046	36C5600	FOOT	15/12/2003-
048	36E4890	FRAME TRIM	15/12/2003-
049	36E2120	TOP BRACKET	15/12/2003-
050	36E2240	LAMP PROTECTION GLASS SLIDE	15/12/2003-
051	36E2270	CONDENS. DRAIN	15/12/2003-
052	36E2280	FRAME TRIM	15/12/2003-
053	36E4960	FRAME TRIM	15/12/2003-
054	36E3990	CONDENS. DRAIN	15/12/2003-
055	36G6520	HINGE	15/12/2003-

<b>Pos</b>	<b>Code</b>	<b>Description</b>	<b>Info</b>
056	36M7070	KEY LOCK	15/12/2003-
057	36M7080	HINGE	15/12/2003-
058	36Z1410	GASKET	15/12/2003-
059	36Z1530	COND. TRAY	15/12/2003-
060	37N5690	SILK-SCREE.PANEL	15/12/2003-
061	37Q5450	DOOR GASKET	15/12/2003-
062	40K1636	BODY	15/12/2003-
063	32W3850	humidity selection switch	15/12/2003-
064	32D0740	TERMINAL BOARD	15/12/2003-
067	32V3720	RELAY	15/12/2003-
068	32Z3470	TRANSFORMER	15/12/2003-
069	32Z4910	RELAY	15/12/2003-
070	32G3310	RESISTOR	15/12/2003-
071	36E2510	CONDENS. DRAIN	15/12/2003-
072	36Q1880	DRAIN PLUG	15/12/2003-
073	30W3850	COND. TRAY	15/12/2003-
074	32G2420	HEATING ELEMENT	18/04/2005-
075	35Y3830	FAN SUPPORT	15/12/2003-
076	35P3570	CLOSING PLATE	15/12/2003-
077	35R9850	PROTECTION SUPPORT	15/12/2003-
078	35Y5140	DRAIN GUARD	15/12/2003-
079	32V6010	EVAPORATOR PROBE NTC	15/12/2003-
080	35Y2000	SUPPORT	15/12/2003-
081	32M7020	FAN MOTOR	02/10/2004-
082	32M1080	FAN	15/04/2005-
083	3050060	HEATING ELEMENT	19/07/2005-