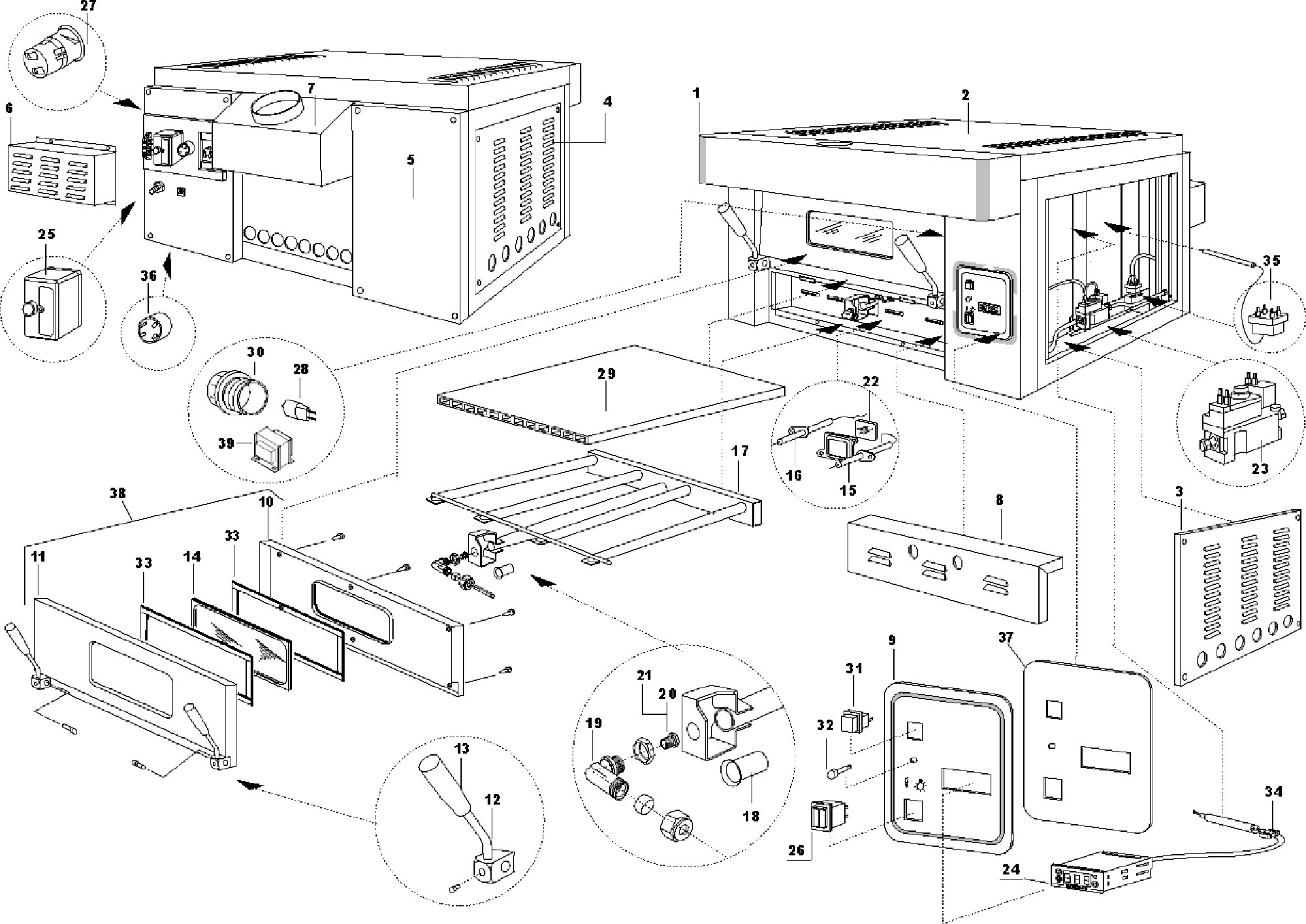




**FPZ4G**

**Edition 20030202-**



Pos	Code	Description	Info
001	FPZ4G-Pos.001	HOOD	02/02/2003-
002	FPZ4G-Pos.002	SUPERIOR PANEL	12/01/2000-
003	FPZ4G-Pos.003	RIGHT SIDE PANEL	12/01/2000-
004	FPZ4G-Pos.004	LEFT SIDE PANEL	12/01/2000-
005	FPZ4G-Pos.005	LEFT REAR PANEL	12/01/2000-
006	FPZ4G-Pos.006	REAR PANEL LIGHT	12/01/2000-
007	FPZ4G-Pos.007	REAR CENTRAL PANEL	12/01/2000-
008	FPZ4G-Pos.008	FRONT PANEL FOR FLAME COVERAGE	12/01/2000-
009	FPZ4G-Pos.009	DASHBOARD	02/02/2003-
010	FPZ4G-Pos.010	DOOR INSIDE PART H. 210 mm	12/01/2000-
011	FPZ4G-Pos.011	DOOR OUTSIDE PART H. 210 mm	12/01/2000-
012	36M7260	DOORHANDLE METAL	12/01/2000-
013	36M7270	DOORKNOB	12/01/2000-
014	37N2350	TEMPERED GLASS 33x12x5	12/01/2000-
015	32V5090	IGNITION SPARK PLUG	12/01/2000-
016	32V5100	DETECTION PLUG	12/01/2000-
017	34A2400	BURNER	12/01/2000-
018	FPZ4G-Pos.018	AIR ADJUSTMENT BUSH DIM. 261	12/01/2000-
019	FPZ4G-Pos.019	ELBOW-CONNECTION DIAM. 10	12/01/2000-
020	33T4170	NOZZLE LIQUID GAS BURNER	12/01/2000-
021	33T4180	NOZZLE LPG GAS BURNER	12/01/2000-
022	37N2340	SPY-HOLE COMPLETE GASVALVE QUICK	12/01/2000-
023	33A1930	GASVALVE QUICK START	12/01/2000-
024	32V5020	DIGITAL THERMOREGULATOR	12/01/2000-
025	32V5010	ELECTRONIC CENTRAL	12/01/2000-
026	3274680	LUMINOUS SWITCH 33x22	12/01/2000-
027	3019720	LAMP HOLDER	01/02/2003-
028	3019710	HALOGEN LAMP	01/02/2003-
029	30M8680	REFRACTORY PLATE 600X900X30	12/01/2000-
030	3019730	GLASS	01/02/2003-
031	32W3930	RESET-BUTTON	12/01/2000-
032	32W3940	CONTROL LIGHT BURNERBLOCK	12/01/2000-
033	37Q4440	FITTING FOR GLASS	12/01/2000-
034	32V4920	THERMAL RESISTOR	12/01/2000-
035	FPZ4G-Pos.035	SAFETY THERMOSTAT	02/02/2003-
036	32V5030	FILTER	12/01/2000-
037	FPZ4G-Pos.037	PLASTIC COATED PANEL	02/02/2003-
038	3091830	DOOR ASS. Y	02/02/2003-
039	3008770	TRANSFORMER	01/02/2003-