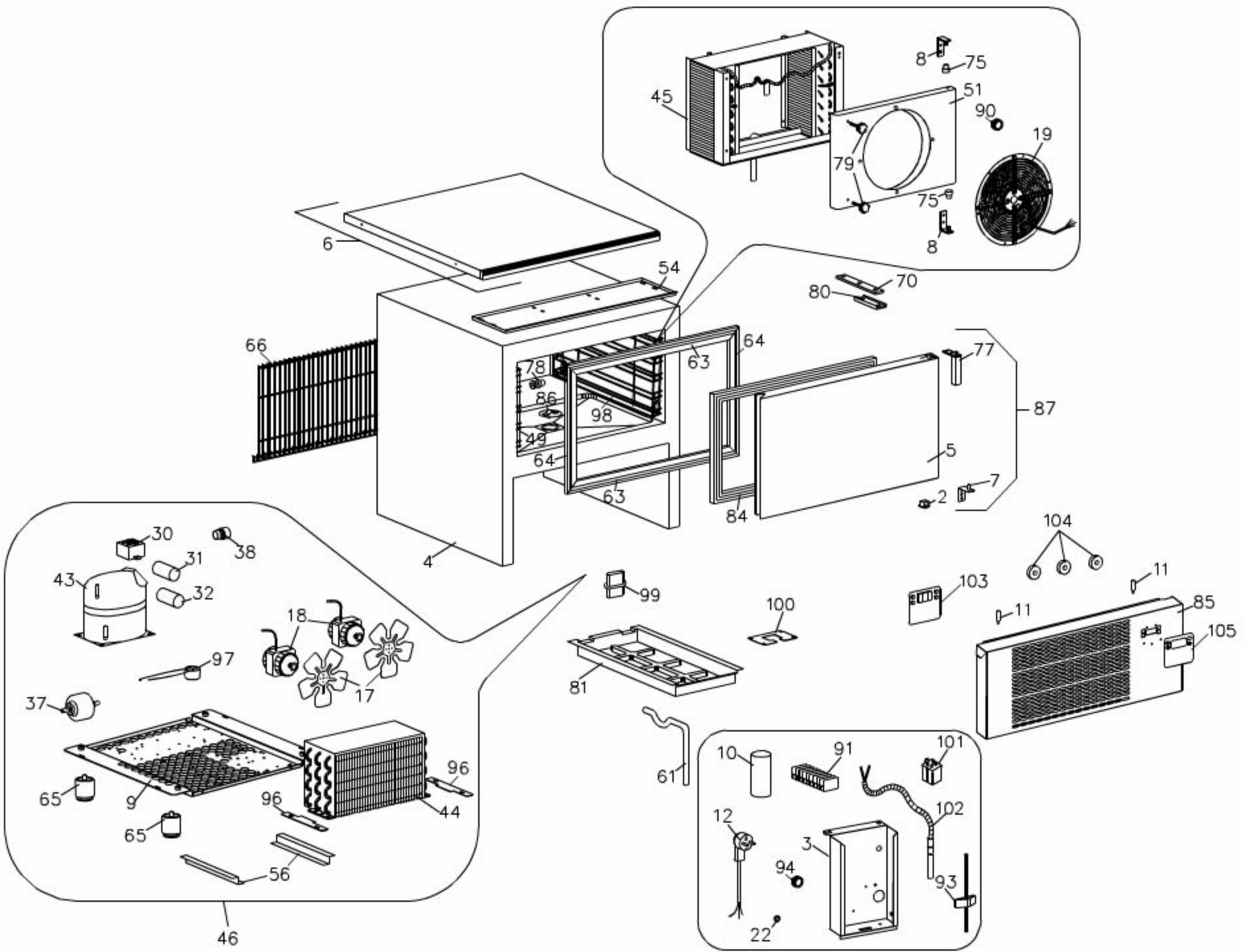




ART1L

Edition 20020119-



Pos	Code	Description	Info
002	3178300	PLUG	15/12/1997-
003	35P6010	PANEL BOARD	21/12/2001-
004	30D5690	FRAME	15/12/1997-
005	30F0860	DOOR	26/10/2001-
006	6006830	TOP ASS. Y	15/12/1997-
007	30T2680	BOTTOM BRACKET	15/12/1997-
008	30T2690	BRACKET	15/12/1997-
009	30W4140	TRAY ASS.Y	19/01/2002-
010	32V5160	CONDENSER	21/12/2001-
011	36G9570	PIN	16/03/2001-
012	32A2200	POWER SUPPLY CABLE	15/12/1997-
017	32M1550	FAN	15/12/1997-
018	32M6870	FAN MOTOR	07/12/2001-
019	32M6610	FAN	21/12/2001-
022	32X0140	GROMMET Ø13,5-Ø25	21/12/2001-
030	32V0330	RELAY	15/12/1997-
031	32Z9710	CONDENSER	15/12/1997-
032	32Z9580	CONDENSER	15/12/1997-
037	33A0330	FILTER	15/12/1997-
038	33A1200	AUXIL.VALVE	15/12/1997-
043	34D5920	COMPRESSOR	15/12/1997-
044	34D3260	CONDEN.+BAFFLE	15/12/1997-
045	34D5220	EVAPORATOR	15/12/1997-
046	34E0430	MOTOR UNIT	19/01/2002-
049	36C4020	LH RACK	15/11/1999-
051	3AA4400	EVAP. GUARD	31/05/2001-
054	35C5940	"OMEGA" BRACKET	15/12/1997-
056	35C7560	"S"FRAME	15/12/1997-
061	35X3860	DRAIN PIPE	07/05/1999-
063	36C2390	TRIM FRAME	15/12/1997-
064	36C2401	TRIM FRAME	15/12/1997-
065	36C4770	FOOT	19/01/2002-
066	36E1440	PROTECT GR	05/07/1999-
070	36D9490	TOP BRACKET	15/12/1997-
075	36E0410	BUSHING	15/12/1997-
077	36G6520	HINGE	15/12/1997-
078	36G8140	PIN	15/12/1997-
079	36G9560	HANDLE	16/03/2001-
081	36Z0300	COND. TRAY	15/12/1997-
084	37Q3810	GASKET	15/12/1997-
085	3AA4750	CONTROL BOARD	21/12/2001-
086	30G3710	PLUG	15/12/1997-
087	6013320	DOOR ASS.Y	26/10/2001-
088	32Q4380	CABLE ASS.Y	15/12/1997-
090	36Z0490	ENGINE CUTOOUT	05/02/1999-
091	32D0750	TERMINAL BOARD	21/12/2001-
093	32D0220	CABLE CLAMP Ø 16	05/02/1999-
094	32D0680	CABLE CLAMP	05/02/1999-
096	35Y1220	PLATE	07/01/1999-
097	32V0370	ENGINE CUTO	15/12/1997-
098	36C4010	RH RACK	15/11/1999-

Pos	Code	Description	Info
099	33Q4390	COUPLING TUBES	12/11/1999-
100	35Y2550	PLATE	15/06/2001-
101	32V3720	RELAY	21/12/2001-
102	32V0150	TEMP. PROBE	21/12/2001-
103	32V6470	ELECTRONIC CARD	21/12/2001-
104	36E0340	SPACER	21/12/2001-
105	37N3860	SILK-SCREE.PANEL	21/12/2001-