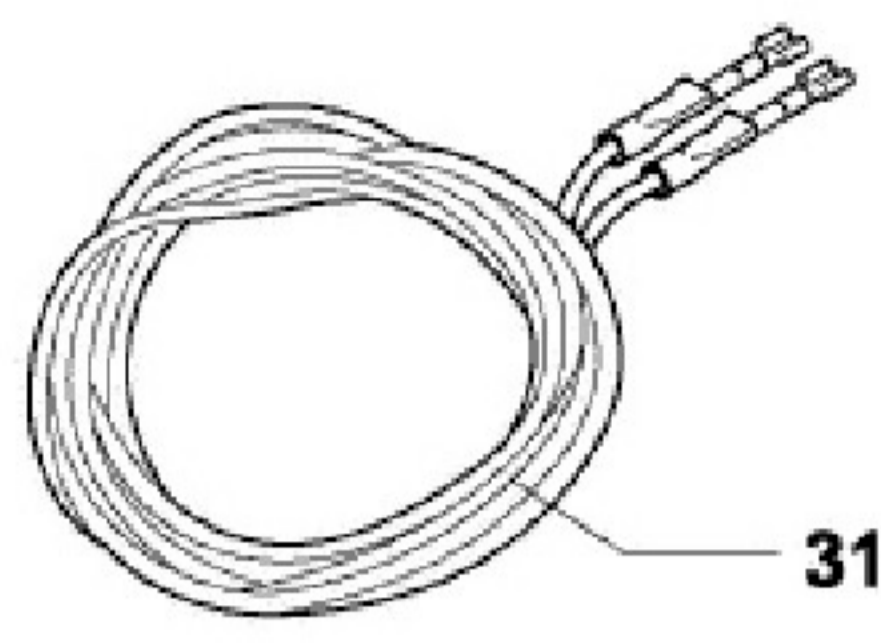


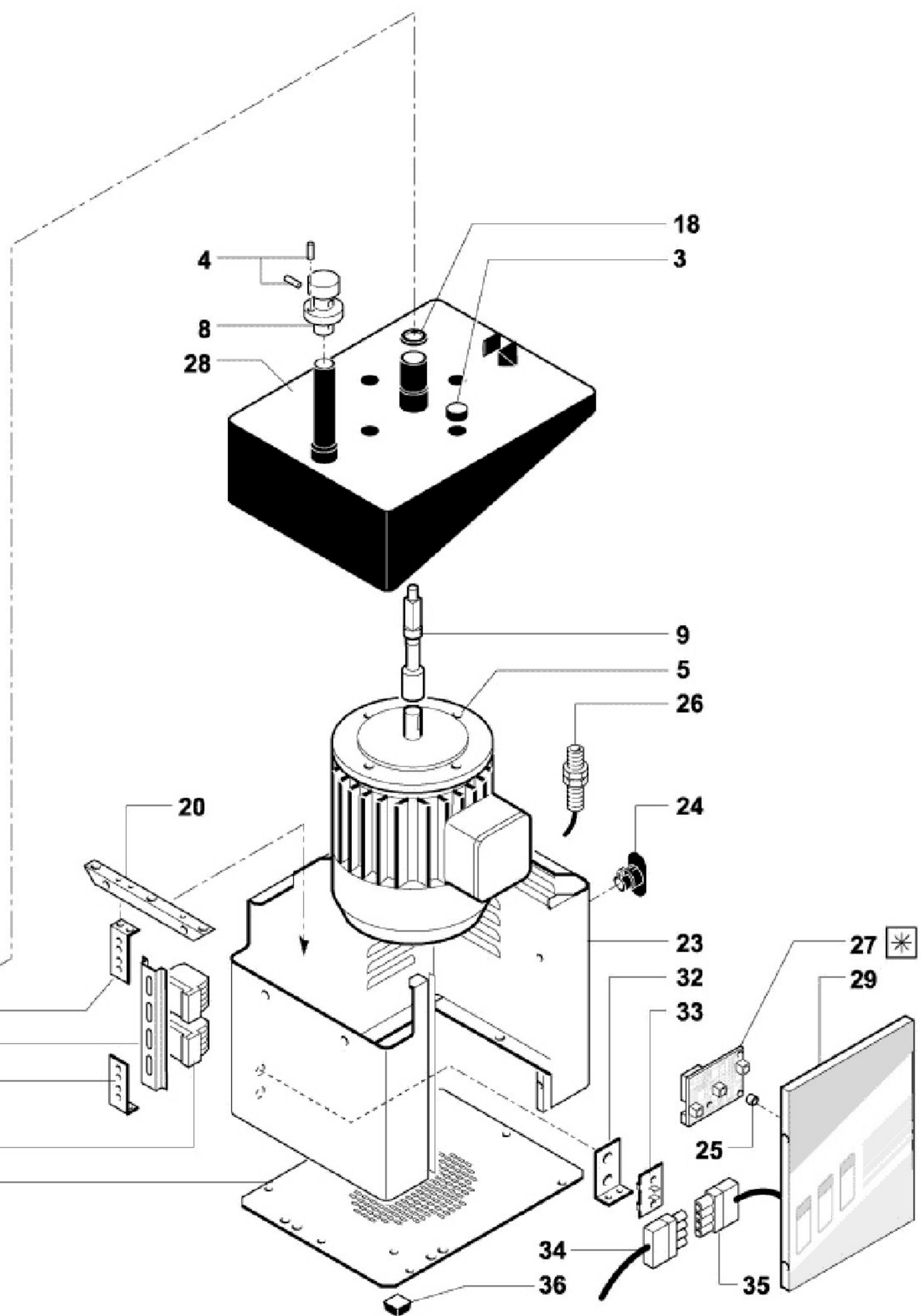
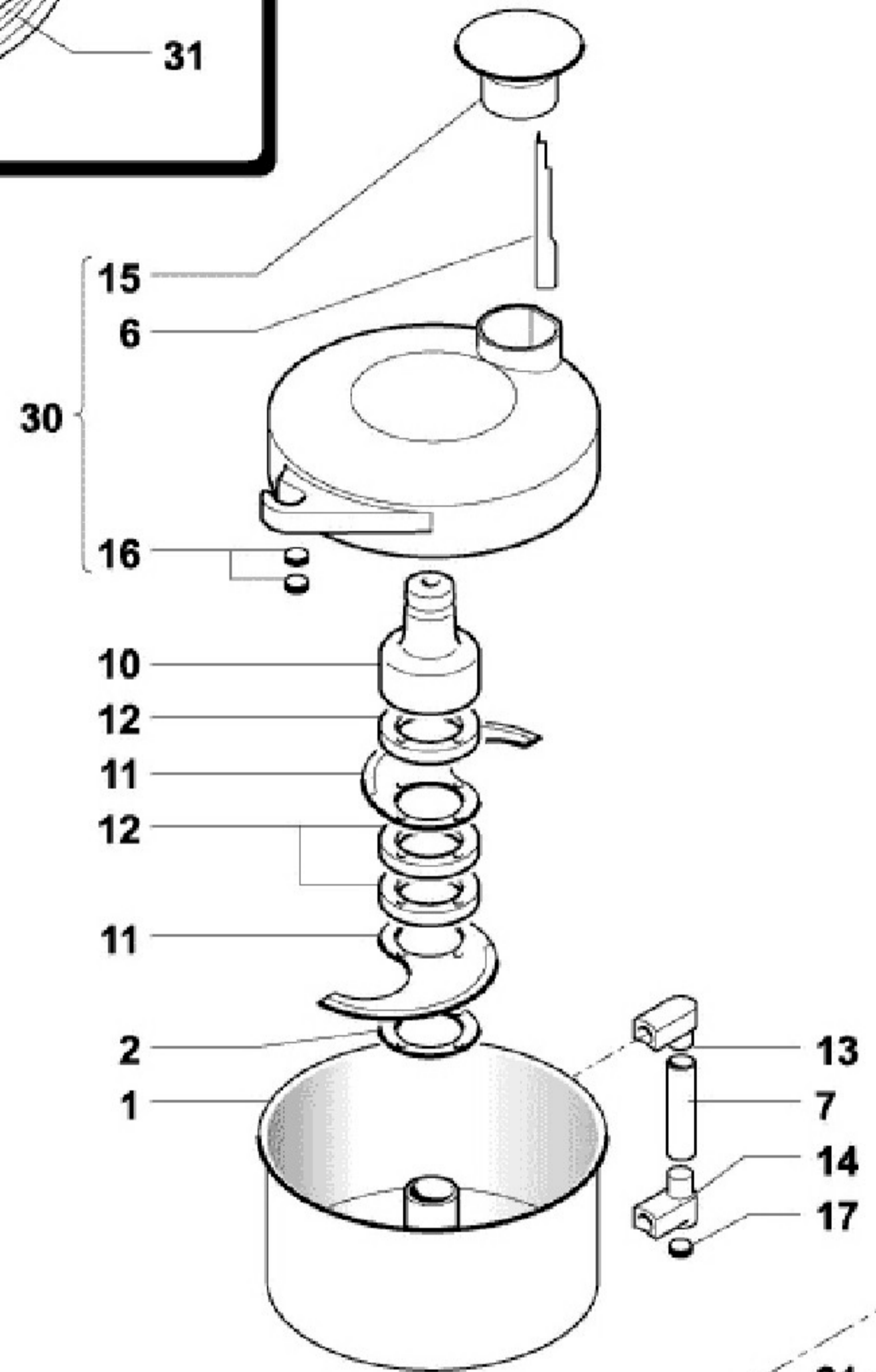


Q3

Edition 19950401-



31



Specificare anno di produzione
 Year of production to be specified
 * Das Baujahr angeben
 Specifier l'annee de production
 Specificar l'año de produccion

Pos	Code	Description	Info
001	30W3110	WELL ASS. Y	01/04/1995-
002	3190070	WASHER	01/04/1995-
003	3190950	PLUG	01/04/1995-
004	31Z8890	LOCKPIN	01/04/1995-
005	32M0130	MOTOR	01/04/1995-
006	35Q9130	BLADE	01/04/1995-
007	35X1880	HANDLE	01/04/1995-
008	36D2910	TERMINAL	01/04/1995-
009	36G7000	SHAFT	01/04/1995-
010	36G7010	HUB	01/04/1995-
011	36G7030	BLADE CUTTER	01/04/1995-
012	36G7040	SPACER	01/04/1995-
013	36M5350	TERMINAL	01/04/1995-
014	36M5620	TERMINAL	01/04/1995-
015	36Z6620	PLUG	01/04/1995-
016	3600150	MAGNET	01/04/1995-
017	3600160	MAGNET	01/04/1995-
018	3151760	V-RING V-16-S	01/04/1995-
019	32Z4840	RELAY	01/04/1995-
020	35V2920	"L" BRACKET	01/04/1995-
021	35V2930	PLATE	01/04/1995-
022	32D0630	"OMEGA" BRACKET	01/04/1995-
023	35W4520	UP BOARD	01/04/1995-
024	32D0360	CABLE CLAMP	01/04/1995-
025	3190050	SPACER	01/04/1995-
026	32W3240	MICROSWITCH	01/04/1995-
027	32Z6990	P.C.B.	01/04/1995-
028	6000590	K3 COVERING ASS.Y	01/04/1995-
029	6000620	CONTROL-BOARD UNIT	01/04/1995-
030	6000920	COVER ASS.Y	01/04/1995-
031	32Q0170	CABLE ASS.Y	01/04/1995-
032	35V8180	PROFILE	01/04/1995-
033	32D1050	PLATE	01/04/1995-
034	32D1030	THREE-POLE CONNECTOR	01/04/1995-
035	32D1040	THREE-POLE CONNECTOR	01/04/1995-
036	3178340	FOOT	01/04/1995-
037	35M8860	BOTTOM PLATE	01/04/1995-