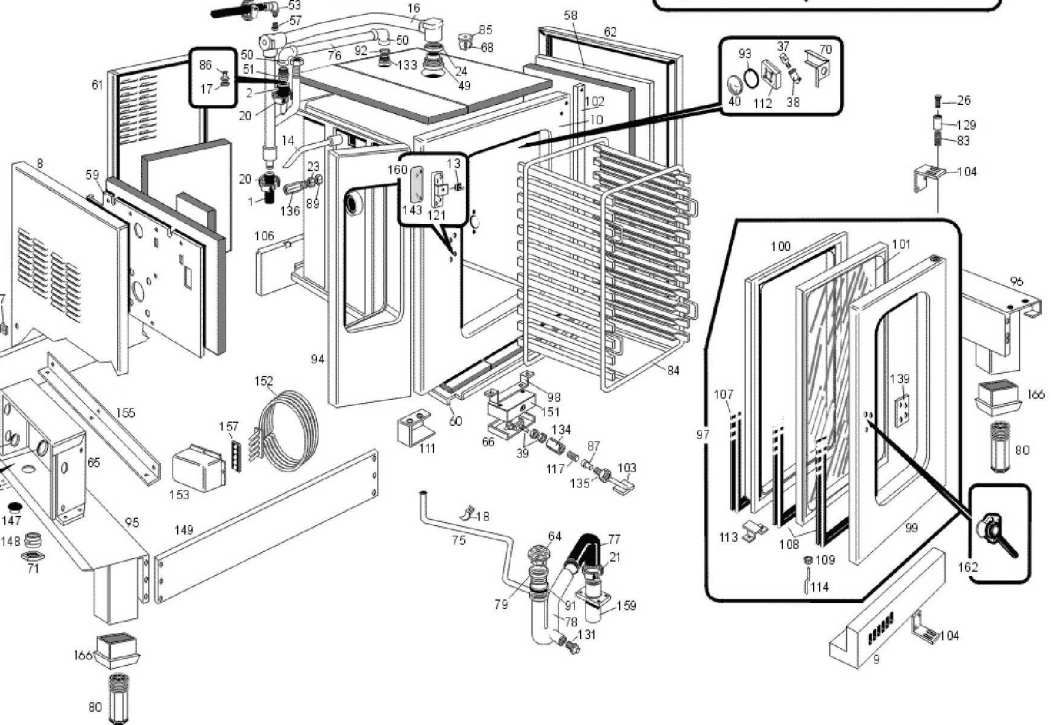
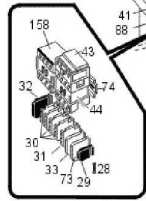
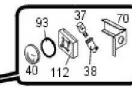
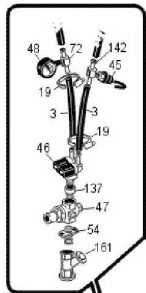
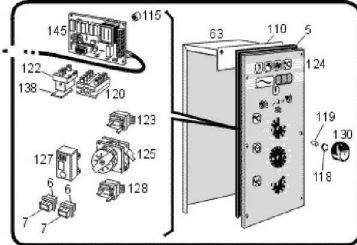
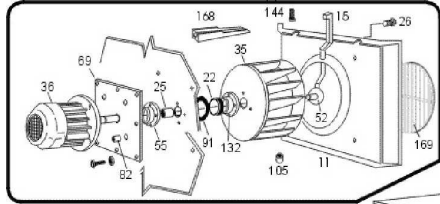




**FCV241E**

**Edition 20141007-**



Pos	Code	Description	Info
001	111AA05	RUBBER HOSE Ø30 Ø20	01/05/1997-
002	131AA23	RUBBER HOSE Ø35 Ø28	01/05/1997-
003	131AA12	RUBBER HOSE Ø17 Ø10 X H <sup>2</sup> O	01/05/1997-
004	3188650	WASHER	23/11/2010-
005	137AA15	GASKET	01/05/1997-
006	170WR01	JUNCTION BOX	01/05/1997-
007	171WR01	JUNCTION BOX	01/05/1997-
008	35C3711	LH PANEL ASS.Y	22/01/1998-
009	30W3261	TRAY ASS.Y	14/04/1999-
010	30D5381	COOKING CHAMBER	01/06/1998-
011	35Y1500	CHAMBER CONVEYOR	15/01/2000-
012	30G2930	OVEN COVER ASS. Y	01/05/1997-
013	36E2530	PLASTIC INSERT LOCK	01/05/1997-
014	30Z2050	PIPE AISI304 Ø12- 159X77	01/06/1998-
015	30Z2590	END PIPE, COMPLETE	15/01/2000-
016	30Z7771	STEAM DRAIN PIPE	01/05/1997-
017	36G6750	RING NUT	01/05/1997-
018	3140060	PIPE SUPPORT Ø 28	01/05/1997-
019	3140230	12/20 PIPE CLAMP	01/05/1997-
020	3140300	HOSE CLAMP	01/05/1997-
021	3140380	HOSE CLAMP	01/05/1997-
022	3150900	GASKET	01/05/1997-
023	3151441	WASHER Ø22 Ø16.2=1.5 CU	14/10/1998-
024	3151450	WASHER	01/05/1997-
025	3151490	BEARING	01/05/1997-
026	3190020	SCREW M6X10	01/05/1997-
027	3170110	ACCOMODATION Ø6	01/05/1997-
028	3201540	FUSE 5X20	01/05/1997-
029	32D0870	TERMINAL CLAMP	01/05/1997-
030	32D0950	LIVE TERMINAL	01/05/1997-
031	32D0970	GROUND TERMINAL	01/05/1997-
032	32D0960	TERMINAL END COVER	01/05/1997-
033	32D1730	FUSE TERMINAL BOARD	24/01/2002-
034	31X0170	PIN FT Ø6	01/05/1997-
035	32M3992	FAN	09/06/1998-
036	32M3820	MOTOR	01/05/1997-
037	32W0210	OVEN LAMP 25 W	01/05/1997-
038	32W2561	LAMP HOLDER	01/05/1997-
039	32W3340	MICROSWITCH	14/11/1999-
040	6300645	GLASS + WASHER	04/08/2004-
041	32X0120	GROMMET Ø 21	01/05/1997-
042	32X0130	GROMMET Ø29-Ø37	01/05/1997-
043	32V1010	RELAY	08/04/1998-
043	32V1020	RELAY 1.4-2.3A	08/04/1998-
044	32Z2531	RELAY 240V-50/60HZ	01/05/1997-
044	3100910	RELAY 220/230V- 50/60Hz	01/01/2008-
045	3041830	PRESSURESTAT	30/09/2004-
046	33D2410	"SOLENOID VALVE 3/4"" 1IN-2OUT"	10/05/1999-
047	33D1650	"PRES. REDUC. VAL. F-F Ø 1/2"""	01/05/1997-
048	33D1680	MANOMETRE 0-40BAR M1/8	01/05/1997-
049	33Q5410	VALVE CONNECTOR	01/05/1997-

Pos	Code	Description	Info
050	33Q5420	"ELBOW FF 3/4""	01/05/1997-
051	33Q5450	DEPRES. CONNECTOR	01/05/1997-
052	30Z0480	WATER DIFFUSER	01/05/1997-
053	33Q5592	NOZZLE SUPPORT. ELBOW	01/05/1997-
054	33Q5641	ENTRY CONNECTOR H2O	01/05/1997-
055	33Q5690	BUSHING SUPPORT	01/05/1997-
056	33Q5980	SOUND REDUC. CONNECTOR	01/05/1997-
057	33T3720	NOZZLE	01/05/1997-
058	35C2700	INSULATION PANEL COVER	01/05/1997-
059	35C4571	INSULATION PANEL COVER	01/05/1997-
060	35B8501	INS. PANEL COVERING	01/06/1997-
061	35C4310	BACK PANEL	01/05/1997-
062	35C3190	RIGHT PANEL	01/05/1997-
063	3AQ0100	COMPON. PROTECTION	01/05/1997-
064	3033400	FILTER	01/05/1997-
065	35Q8202	PANEL BOARD	20/03/2001-
066	35Q2380	END RUN PROTECTION	01/05/1997-
069	35S6082	FLAT BRACKET	01/05/1997-
070	35V8081	LAMPHOLDER SUPPORT	01/05/1997-
071	32D0260	LOCK NUT PG29	01/05/1997-
072	33Q5921	CONNECTOR	01/05/1997-
073	32D1740	TERMINAL	24/01/2002-
074	35V5810	OMEGA BRACKET	01/05/1997-
075	35X0750	DRAIN PIPE	01/05/1997-
076	35X0550	PIPE	01/05/1997-
077	33M1170	PIPE	01/05/1997-
078	36A3390	DRAIN TRAP	01/05/1997-
079	36A3400	DRAIN	01/05/1997-
080	36C3220	FOOT S/S ASSEMBLY	23/01/1998-
082	36D7140	BUSHING	01/05/1997-
083	36G5320	SPRING	01/05/1997-
084	36G7631	TROLLEY	23/04/2003-
085	6300591	VALVE	31/12/2005-
086	36G6740	COUNTERWEIGHT	01/05/1997-
087	36G6041	END RUN PIN	20/01/2000-
088	32X0140	GROMMET Ø13,5-Ø25	01/05/1997-
089	36Q1171	LOCKNUT M16X1.5	01/05/1997-
090	36Q1320	PLUG	01/05/1997-
091	37Q3011	GASKET	01/05/1997-
092	3151730	GASKET	01/05/1997-
093	37Q7840	GASKET	01/05/1997-
094	3AA1021	CONTROL BOARD ASS.Y	01/05/1997-
095	30T5714	SMALL END SUPPORT	23/01/1998-
096	30T3081	SMALL END SUPPORT	23/01/1998-
097	6300419	DOOR ASSEMBLY	01/05/1997-
098	35V9250	LIMIT SWITCH PROFILE	01/05/1997-
099	30G1461	DOOR ASS. Y	01/05/1997-
100	35G0380	OVEN COUNTER DOOR	01/05/1997-
101	37M0271	CHAMBER GLASS ASS. Y	01/05/1997-
102	35V4430	PLATE	01/05/1997-
103	30T2250	LIMIT SWITCH COMM. ASS. Y	01/05/1997-

Pos	Code	Description	Info
104	36M4122	DOOR HINGE	01/05/1997-
106	30T1502	COMB. CHAMBER SUPPORT ASS.Y	01/05/1997-
107	37Q0992	DOOR GASKET	14/04/1999-
108	37Q3001	GLASS GASKET	21/04/1999-
109	36Q0910	GLASS PIPE GUIDE	01/05/1997-
110	35V0790	FLAT BRACKET	01/05/1997-
111	35V3330	SPILLAGE TRAY SUPP. LH	01/05/1997-
112	35V8072	LAMP HOLDER BOX	01/05/1997-
113	35V9030	CHAMBER GLASS SUPP.	01/05/1997-
114	35X3430	DOOR DRAIN PIPE	01/05/1997-
115	36C0970	SPACER	01/05/1997-
117	36G7140	SPRING	01/05/1997-
118	3150790	THERMOSTAT PROTECT.	01/05/1997-
119	3170290	KNOB SPRING	01/05/1997-
120	32W2941	COMMUTATOR	01/05/1997-
121	36M0820	LOCK HOUSING	01/05/1997-
122	3111950	SAFETY THERMOSTAT	29/10/2008-
123	32Z5820	THERMOSTAT 50-250° C	01/05/1997-
124	37M5641	PLASTIC COATED PANEL	01/05/1997-
125	32Z6330	TIMER 0-120' 220/240V-50HZ	01/05/1997-
125	32Z6440	TIMER 0-120 60HZ	01/05/1997-
126	32Z6191	TEMP.PROBE PT100	01/05/1997-
127	32Z5860	BUZZER 50"	01/05/1997-
128	32Z5880	THERMOSTAT 30-90°C	01/05/1997-
129	36D7062	PIN	07/10/2014-
130	36M4560	ELECTRIC CONTROL KNOB	01/05/1997-
131	33Q3210	PLUG	01/05/1997-
132	33Q5381	RING SUPPORT	01/05/1997-
133	33Q5390	"RING 3/4""	01/05/1997-
134	33Q4120	CONNECT. M16X1.1M10	14/11/1999-
135	33Q5610	RING M16X1.5	01/05/1997-
136	33Q5630	CONNECT MF 3/8"- M16	01/05/1997-
137	33Q5650	SOCKET F3/4 M1/2 Ø30X25	01/05/1997-
138	35S6361	L" SHAPED BAR	01/05/1997-
139	35V9050	HANDLE SHAPED BAR	01/05/1997-
142	33Q6081	CONNECTOR Ø 0.7	01/05/1997-
143	36M1570	LOCK SPACER	01/05/1997-
144	3190040	SCREW M6X20	01/05/1997-
145	32Z6211	P.C.B. UL	16/02/2000-
146	36Q0550	LOCK NUT M12X1.5	01/05/1997-
147	36Q0190	Cap Ø20	01/05/1997-
148	32D0210	FAILED	01/05/1997-
149	35R0870	FRONT PANEL	01/05/1997-
150	35R1510	BACK PANEL	01/05/1997-
151	35Q2360	SUPP. END RUN	01/05/1997-
152	32G1711	PROTECTION HEATING EL.	01/05/1997-
153	35Q1450	HEAT ELEMENT BRACKET	01/05/1997-
154	35Q6360	THERMORES. PROTECTION	01/05/1997-
155	35S9921	"L" BRACKET	01/06/1997-
156	36D8492	FEELER SUPPORT	01/05/1997-
157	37Q3220	GASKET	01/05/1997-

Pos	Code	Description	Info
158	3100930	RELAY	01/01/2008-
158	3100930	RELAY	01/01/2008-
159	33Q6100	LOWER DRAIN PIPE	01/05/1997-
160	6300420	LOCK ASS. Y	01/05/1997-
161	33Q6091	H2O FILTER 3/4"	01/05/1997-
162	36M6380	OVEN DOOR HANDLE	05/05/1999-
163	32Q2021	EL. CABLES FCV	15/04/1998-
164	32Q3690	CABLES FCV101E/EDS/EDM	30/04/1998-
165	36Q1550	CAP Ø11	22/01/1998-
166	36E0600	FOOT SUPPORT 2"	23/01/1998-
167	3200130	FUSE 5X20-3A-250V	15/04/1998-
168	35Y0570	WATER ENTRY PROFILE	01/06/1998-
169	36D8851	FAN GUARD	15/01/2000-