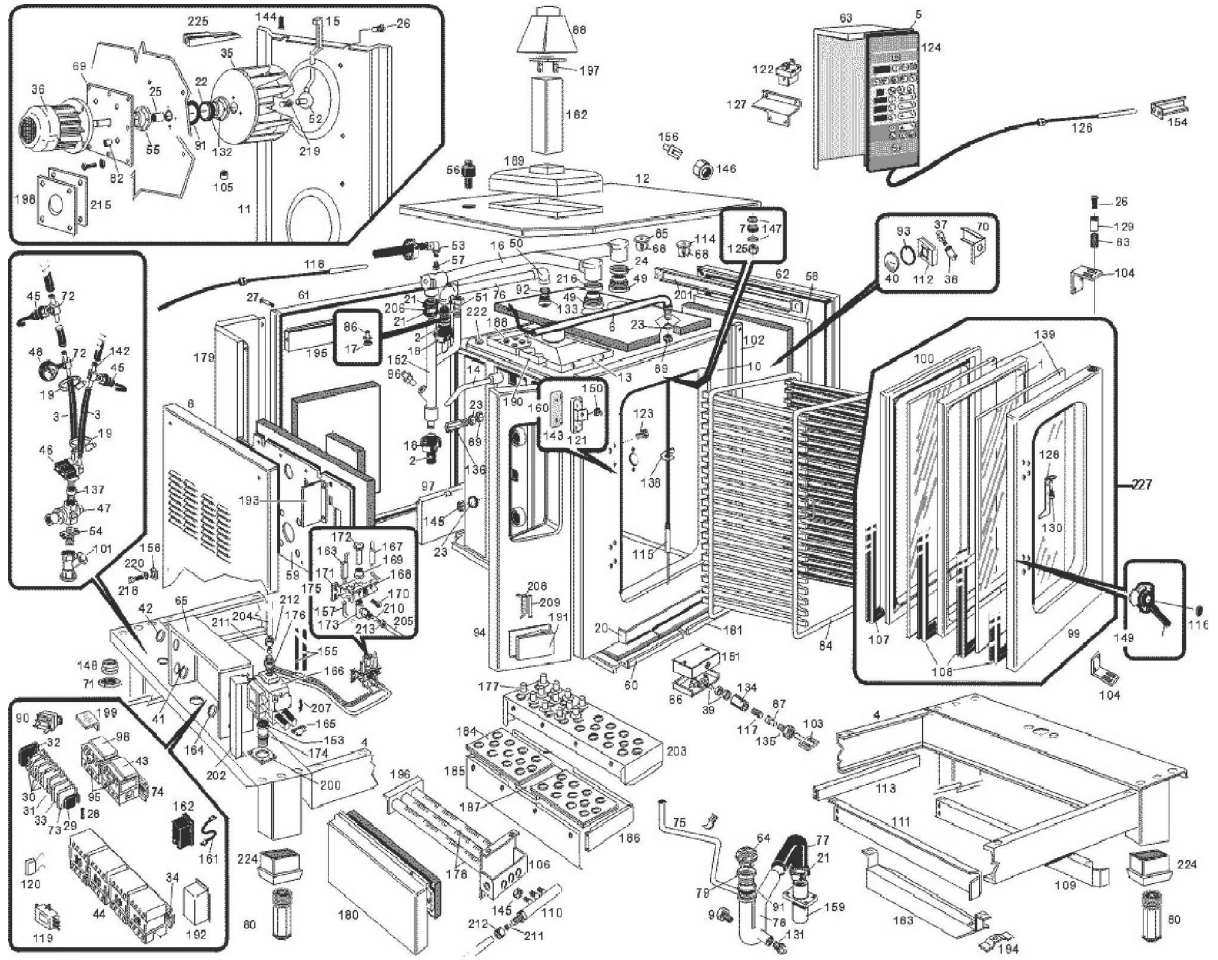




**FCV401DM**

**Edition 20141007-**



Pos	Code	Description	Info
001	30T6290	GLASS SPACER	01/01/1997-
002	131AA23	RUBBER HOSE Ø35 Ø28	01/01/1997-
003	131AA12	RUBBER HOSEØ17Ø10 X H²O	01/01/1997-
004	30T2501	OVEN BASE	23/01/1998-
005	137AA15	GASKET	01/01/1997-
006	30Z1900	PROBE PIPE ASS . Y	01/01/1997-
007	3150220	GASKET	01/01/1997-
008	35C6531	LH PANEL ASS.Y	22/01/1998-
009	33Q1900	TRAP THERMOST. CONNECT.	01/01/1997-
010	30D4852	COOKING CHAMBER	17/02/1999-
011	35Y0761	CHAMBER AIR GUIDE	17/02/1999-
012	30G3130	OVEN COVER ASS. Y	01/01/1997-
013	30D3111	INSIDE FLUE ASSEMBLY	03/02/1999-
014	30Z2050	PIPE AISI304 Ø12- 159X77	01/06/1998-
015	30Z2120	END PIPE, COMPLETE	01/06/1998-
016	30Z1870	STEAM DRINE PIPE	01/01/1997-
017	36G6750	RING NUT	01/01/1997-
018	3140300	HOSE CLAMP	01/01/1997-
019	3140230	12/20 PIPE CLAMP	01/01/1997-
020	30W1050	TRAY ASS.Y	01/01/1997-
021	3140380	HOSE CLAMP	01/01/1997-
022	3150900	GASKET	01/01/1997-
023	3151441	WASHER Ø22Ø16.2=1.5 CU	14/10/1998-
024	3151450	WASHER	01/01/1997-
025	3151490	BEARING	01/01/1997-
026	3190020	SCREW M6X10	01/01/1997-
027	3190500	SCREW TC C/INT M5	01/01/1997-
028	3200020	FUSE 5X20	01/01/1997-
029	32D0870	TERMINAL CLAMP	01/01/1997-
030	32D0950	LIVE TERMINAL	02/02/1997-
030	32D1160	LIVE TERMINAL	28/07/2003-
031	32D1000	GROUND TERMINAL	01/01/1997-
032	32D1170	TERMINAL END COVER	28/07/2003-
033	32D0641	FUSE TERMINAL BOARD	01/01/1997-
034	35V5810	OMEGA BRACKET	02/02/1997-
035	32M4632	8-BLADE FAN Ø390 mms	01/01/2001-
036	32M4740	MOTOR	01/01/1997-
037	32W0210	OVEN LAMP 25 W	01/01/1997-
038	32W2561	LAMP HOLDER	01/01/1997-
039	32W3340	MICROSWITCH	14/11/1999-
040	6300645	GLASS + WASHER	04/08/2004-
041	32X0120	GROMMETØ 21	01/01/1997-
042	32X0130	GROMMET Ø29-Ø37	01/01/1997-
043	32V1020	RELAY 1.4-2.3A	08/04/1998-
044	3100910	RELAY 220/230V- 50/60Hz	01/01/2008-
045	3041830	PRESSURESTAT	30/09/2004-
046	33D2410	"SOLENOID VALVE 3/4"" 1IN-2OUT"	10/05/1999-
047	33D1650	"PRES. REDUC. VAL. F-F Ø 1/2"""	01/01/1997-
048	33D1680	MANOMETRE 0-40BAR M1/8	01/01/1997-
049	33Q5410	VALVE CONNECTOR	01/01/1997-
050	33Q5420	"ELBOW FF 3/4"""	01/01/1997-

Pos	Code	Description	Info
051	33Q5450	DEPRES. CONNECTOR	01/01/1997-
052	30Z0480	WATER DIFFUSER	01/01/1997-
053	33Q5592	NOZZLE SUPPORT. ELBOW	01/01/1997-
054	33Q5641	ENTRY CONNECTOR H2O	01/01/1997-
055	33Q5690	H2O BUSHING SUPPORT	01/01/1997-
056	33Q0031	SOUND REDUC. CONNECT.	01/01/1997-
057	33T3720	NOZZLE	01/01/1997-
058	35B7981	INSULATION PANEL COVER	01/01/1997-
059	35C5351	INSULATION PANEL COVER	01/01/1997-
060	35C6200	INS. PANEL COVERING	01/01/1997-
061	35C5230	BACK PANEL	01/01/1997-
062	35C6520	RH PANEL	01/01/1997-
063	30Q1100	COMPON. PROTECTION	01/01/1997-
064	3033400	FILTER	01/01/1997-
065	35Q9162	EL. BOARD	20/03/2001-
066	35Q2380	END RUN PROTECTION	01/01/1997-
069	35S6082	FLAT BRACKET	01/01/1997-
070	35V8081	LAMPHOLDER SUPPORT	01/01/1997-
071	32D0200	LOCK NUT PG16	01/01/1997-
072	33Q5921	CONNECTOR	01/01/1997-
073	32D1730	FUSE TERMINAL BOARD	24/01/2002-
074	32D0911	"OMEGA" BRACKET	01/01/1997-
075	35X3520	DRAIN PIPE	01/01/1997-
076	35X3740	PIPE	01/01/1997-
077	33M1170	PIPE	01/01/1997-
078	36A3961	DRAIN PIPE	01/01/1997-
079	36A3400	DRAIN	01/01/1997-
080	36C3220	FOOT S/S ASSEMBLY	23/01/1998-
082	36C0380	BUSHING	01/01/1997-
083	36G5320	SPRING	01/01/1997-
084	51AD938	TROLLEY	01/01/1997-
085	6300592	VALVE	31/12/2005-
086	36G6740	COUNTERWEIGHT	01/01/1997-
087	36G6041	END RUN PIN	20/01/2000-
088	30D4980	FLAME DEFLECTOR	01/01/1997-
089	36Q1171	LOCKNUT M16X1.5	01/01/1997-
090	32V0020	THERMOSTAT 30°-90° C	02/02/1997-
091	37Q3011	GASKET	01/01/1997-
092	3151730	GASKET	01/01/1997-
093	37Q7840	GASKET	01/01/1997-
094	30A3610	CONTROL BOARD ASS.Y	01/01/1997-
095	32Z7170	INDEP. ASSEMBLY SUPPORT	01/01/1997-
096	33Q6370	NOZZLE SUPP. CONNECT.	01/01/1997-
097	30T1502	COMB. CHAMBER SUPPORT ASS.Y	07/03/1997-
098	32V2550	RELAY 0,6-1,0 A	06/10/1999-
099	30G2451	DOOR	01/01/1997-
100	30G2460	OVEN COUNTER DOOR	01/01/1997-
101	33Q6091	H2O FILTER 3/4"	01/01/1997-
102	35V3830	PLATE	01/01/1997-
103	36D8360	MICROSWITCH ROD	01/01/1997-
104	36M4122	DOOR HINGE	01/01/1997-

Pos	Code	Description	Info
105	33Q1150	DISTANCIAL BUSHING	01/01/1997-
106	30T2600	BURNER SUPPORT	01/01/1997-
107	37Q7633	DOOR GASKET	08/02/1999-
108	37Q7621	GASKET	19/05/1999-
109	35V6131	RH SLIDE FROFILE	11/02/1997-
110	30Z1090	GAS MANIFOLD ASS. Y	01/01/1997-
111	35V6141	LH SLIDE PROFILE	11/02/1997-
112	35V8072	LAMP HOLDER BOX	01/01/1997-
113	35V6150	PERFIL "U"	01/01/1997-
114	6300591	VALVE	31/12/2005-
115	32Z1983	PIN PROBE PT100	08/03/1999-
117	36G7140	SPRING	01/01/1997-
118	32Z6041	PT100 PROBE	01/01/1997-
119	32Z6090	FILTER	01/01/1997-
120	32Z6100	FILTER	01/01/1997-
121	36M0820	LOCK HOUSING	01/01/1997-
122	3111950	SAFETY THERMOSTAT	29/10/2008-
123	33Q0530	CAP M. 3/8	01/01/1997-
124	32Z6813	SCHEDA ELETTRONICA	31/01/2003-
125	33Q0730	CONNECT.	01/01/1997-
126	32Z6191	TEMP.PROBE PT100	01/01/1997-
127	35V5820	" L " SHAPED BAR	01/01/1997-
128	35V8590	PROBE SUPPORT	01/01/1997-
129	36D7062	PIN	07/10/2014-
130	36C1380	BUSHING PROTECT. PROBE	01/01/1997-
131	33Q3210	PLUG	01/01/1997-
132	33Q5381	RING SUPPORT	01/01/1997-
133	33Q5390	"RING 3/4""	01/01/1997-
134	33Q4120	CONNECT. M16X1.1M10	14/11/1999-
135	33Q5610	RING M16X1.5	01/01/1997-
136	33Q5630	CONNECT MF 3/8"- M16	01/01/1997-
137	33Q5650	SOCKET F3/4 M1/2 Ø30X25	01/01/1997-
138	35S5330	CABLE CLAMP	01/01/1997-
139	37M5840	DOOR GLASS	01/01/1997-
142	33Q6080	CONNECTOR Ø 0.7	02/02/1997-
143	36M0860	LOCK SPACER	01/01/1997-
144	3190040	SCREW M6X20	01/01/1997-
145	36Q1110	LOCK NUT 3/8"	01/01/1997-
146	36Q0550	LOCK NUT M12X1.5	01/01/1997-
147	3120100	WASHER	01/01/1997-
148	32D0190	FAIRLEAD Ø 6 Ø 16	01/01/1997-
149	36M6380	OVEN DOOR HANDLE	05/05/1999-
150	36E2530	PLASTIC INSERT LOCK	01/01/1997-
151	35Q2360	SUPP. END RUN PROTECTION	01/01/1997-
152	30Z1880	DRAIN PIPE 1250X170	01/01/1997-
153	3151060	"O" RING Ø 28,25	01/01/1997-
154	35Q6360	THERMORES. PROTECTION	01/01/1997-
155	32A0780	CABLE	01/01/1997-
156	36D8492	FEELER SUPPORT	01/01/1997-
157	32A1600	CABLE "HF" 1200MM	01/01/1997-
158	3170110	ACCOMODATION Ø6	01/01/1997-

Pos	Code	Description	Info
159	33Q6100	LOWER DRAIN PIPE	01/01/1997-
160	6300420	LOCK ASS. Y	01/01/1997-
161	32A1640	CABLE "HF" 150MM	01/01/1997-
162	32T0210	SPARK IGNITION DEVICE	20/03/2001-
163	32T0010	IGNITION PLUG	27/01/2010-
164	32X0200	GROMMET Ø7.5-Ø11.5	01/01/1997-
165	33A0020	COMPL. VALVE	01/01/1997-
166	33A0590	"GAS VALVE 1/2""	01/01/1997-
167	6021770	THERMOC. M9X1X1000 CAB	01/06/2001-
168	33A0950	REAR BRACKET	01/01/1997-
169	33A0970	RING NUT	01/01/1997-
170	33A0980	SCREW 3/16W. X18TE	01/01/1997-
171	33A1000	FRONT BRACKET	01/01/1997-
172	33A1081	THREE-FLAME BURNER	24/04/2008-
173	33A2900	PILOT BURNER BODY	01/01/1997-
174	33Q5400	GAS INLET	01/01/1997-
175	6300427	CONNECTOR PILOT BURNER ASS. Y	01/01/1997-
176	33Q5880	CONNECT. R1/2- M20X1.5	01/01/1997-
177	33Q6230	BUSHING	01/01/1997-
178	34A0500	BURNER 15 KW	01/01/1997-
179	35C5260	BACK PANEL PROTECTION	01/01/1997-
180	35C5850	INS. PANEL COVERING	01/01/1997-
181	35C6210	INSULATION PANEL COVER	01/01/1997-
182	35D3780	FLUE PIPE	01/01/1997-
183	35D7350	LOWER PROTECTION	01/01/1997-
184	35D8440	COMB. CHAMBER SCREEN	01/01/1997-
185	35D8450	HALF COMBUSTION CHAMBER	01/01/1997-
186	35D8460	HALF COMBUSTION CHAMBER	01/01/1997-
187	35D8620	SUPPORT COMB. CHAMBER	01/01/1997-
188	35D8771	FLUE PACKING HOLDER	21/01/1999-
189	35D8960	FLUE SUPPORT	01/01/1997-
190	35D9730	FLUE CEN TRAL	01/01/1997-
191	35G3180	SUPPORT SLOT COVER	01/01/1997-
192	35Q1730	EL. IGNITION PROTECTION	01/01/1997-
193	35Q8871	" L" SHAPED SPLASH GUARD	01/01/1997-
194	35Q9500	PILOT VISUAL MIRROR	01/01/1997-
195	35R0200	BACK PANEL STIFFENING	01/01/1997-
196	35S2740	BACK BURNER SUPPORT	01/01/1997-
197	35S2900	AIR DEFLECTOR	01/01/1997-
198	35S2920	FLAT BRACKET	01/01/1997-
199	35S6361	L" SHAPED BAR	01/01/1997-
200	35S6690	FLAT BRACKET	01/01/1997-
201	35V8321	RHPAN EL STI FFENING	01/01/1997-
202	35V9280	SUPPORT SOLENOID VALVE	01/01/1997-
203	35V9760	COMB. CHAMBER SUPPORT ASS.Y	01/01/1997-
204	35X3530	PIPE	01/01/1997-
205	35X3540	PIPE	01/01/1997-
206	35X3760	DRAIN PIPE	01/01/1997-
207	36G3690	SPRING	01/01/1997-
208	36G7960	TORSION SPRING	02/02/1997-
209	36G7820	PIN	01/01/1997-

Pos	Code	Description	Info
210	36Q0020	BICONE Ø 6 X 6.5	01/01/1997-
211	36Q0030	BICONE Ø12X8	01/01/1997-
212	36Q0050	BICONE NUT Ø 12	01/01/1997-
213	36Q0060	CLOSING BICONE NUT Ø 6	01/01/1997-
215	3152020	GASKET	01/01/1997-
216	3151450	WASHER	02/02/1997-
217	35R0180	SUPPORT COMB. CHAMBER	01/01/1997-
218	31X0170	PIN FT Ø6	01/01/1997-
219	3191070	PIN Ø 6	02/02/1997-
220	3188650	WASHER	23/11/2010-
221	32Q3880	CABLES FCV401D M	01/01/1997-
222	37Q3900	PIPE GASKET	01/12/1997-
223	36Q1550	CAP Ø11	22/01/1998-
224	36E0600	FOOT SUPPORT 2"	23/01/1998-
225	35Y0770	WATER INLET PROFILE	01/06/1998-
226	3152360	WASHER 3/8" 3/8" Ø22-Ø17.2=1.5 CU/NI	14/10/1998-
227	6300187	DOOR ASSEMBLY FCV401	01/01/1997-