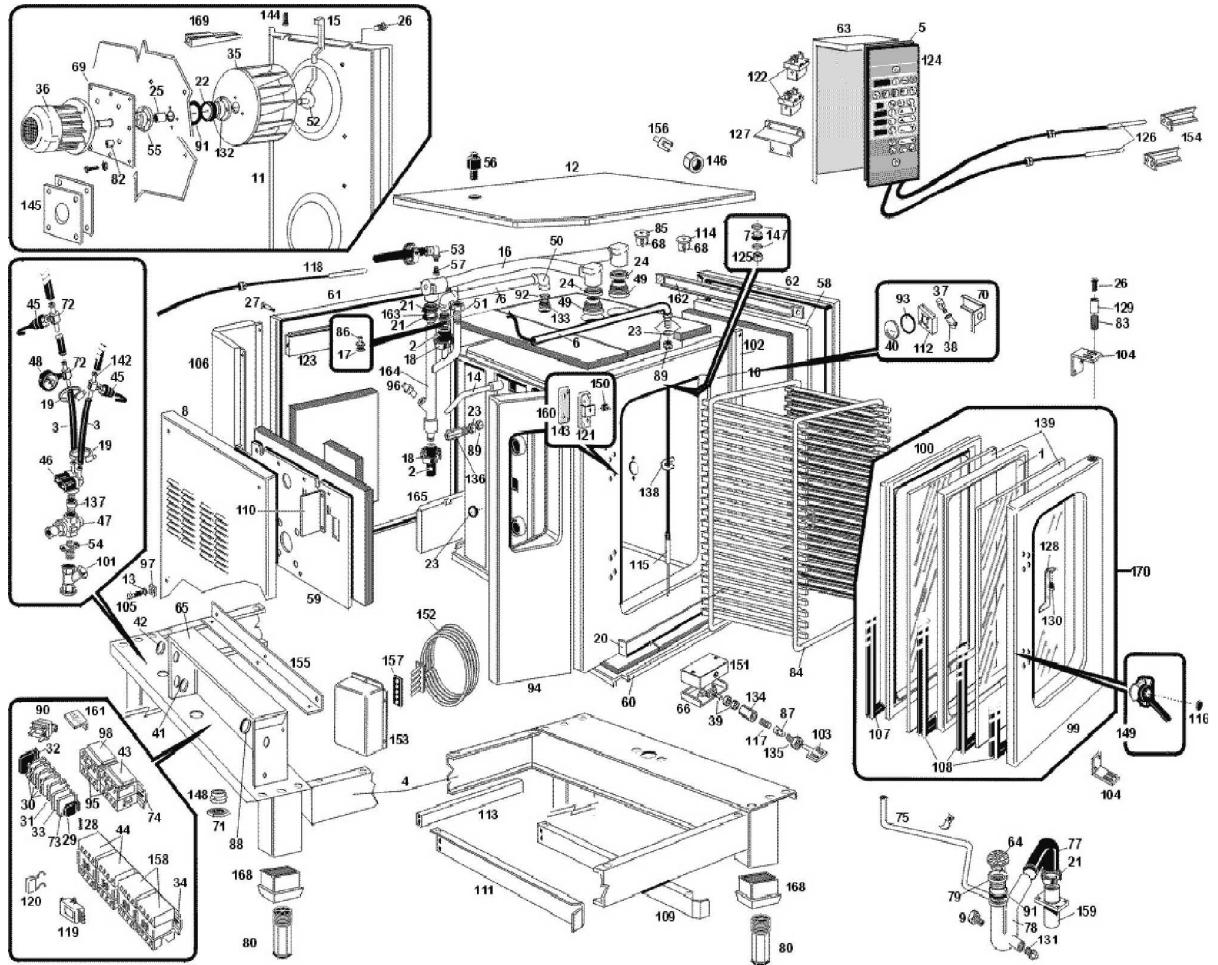




FCV401EDM

Edition 20141007-



Pos	Code	Description	Info
001	30T6290	GLASS SPACER	01/01/1997-
002	131AA23	RUBBER HOSE Ø35 Ø28	01/01/1997-
003	131AA12	RUBBER HOSE Ø17 Ø10 X H ² O	01/01/1997-
004	30T6343	OVEN BASE	23/01/1998-
005	137AA15	GASKET	01/01/1997-
006	30Z1000	PROBE PIPE ASS . Y	01/01/1997-
007	3150220	GASKET	01/01/1997-
008	35C6531	LH PANEL ASS.Y	22/01/1998-
009	33Q1900	TRAP THERMOST. CONNECT.	01/01/1997-
010	30D5211	COOKING CHAMBER	01/06/1998-
010	30D5221	COOKING CHAMBER	01/06/1998-
011	35Y0750	CHAMBER CONVEYOR	01/06/1998-
012	30G3580	IVEN COVER ASS. Y	01/01/1997-
013	3188650	WASHER	23/11/2010-
014	30Z2050	PIPE AISI304 Ø12- 159X77	01/06/1998-
015	30Z2100	END PIPE, COMPLETE	01/06/1998-
016	30Z1870	STEAM DRINE PIPE	01/01/1997-
017	36G6750	RING NUT	01/01/1997-
018	3140300	HOSE CLAMP	01/01/1997-
019	3140230	12/20 PIPE CLAMP	01/01/1997-
020	30W1050	TRAY ASS.Y	01/01/1997-
021	3140380	HOSE CLAMP	01/01/1997-
022	3150900	GASKET	01/01/1997-
023	3151441	WASHER Ø22Ø16.2=1.5 CU	14/10/1998-
024	3151450	WASHER	01/01/1997-
025	3151490	BEARING	01/01/1997-
026	3190020	SCREW M6X10	01/01/1997-
027	3190500	SCREW TC C/INT M5	01/01/1997-
028	3200020	FUSE 5X20	01/01/1997-
029	32D0870	TERMINAL CLAMP	01/01/1997-
030	32D1160	LIVE TERMINAL	28/07/2003-
031	32D1000	GROUND TERMINAL	01/01/1997-
032	32D1170	TERMINAL END COVER	28/07/2003-
033	32D1730	FUSE TERMINAL BOARD	24/01/2002-
034	32D0920	SECTION	01/01/1997-
035	32M3992	FAN	09/06/1998-
036	32M3880	MOTOR	01/01/1997-
037	32W0210	OVEN LAMP 25 W	01/01/1997-
038	32W2561	LAMP HOLDER	01/01/1997-
039	32W3340	MICROSWITCH	14/11/1999-
040	6300645	GLASS + WASHER	04/08/2004-
041	32X0120	GROMMET Ø 21	01/01/1997-
042	32X0130	GROMMET Ø29-Ø37	01/01/1997-
043	32V1010	RELAY	08/04/1998-
044	3100910	RELAY 220/230V- 50/60Hz	01/01/2008-
045	3041830	PRESSURESTAT	30/09/2004-
046	33D2410	"SOLENOID VALVE 3/4"" 1IN-2OUT"	10/05/1999-
047	33D1650	"PRES. REDUC. VAL. F-F Ø 1/2"""	01/01/1997-
048	33D1680	MANOMETRE 0-40BAR M1/8	01/01/1997-
049	33Q5410	VALVE CONNECTOR	01/01/1997-
050	33Q5420	"ELBOW FF 3/4"""	01/01/1997-

Pos	Code	Description	Info
051	33Q5420	"ELBOW FF 3/4""	01/01/1997-
052	30Z0480	WATER DIFFUSER	01/01/1997-
053	33Q5592	NOZZLE SUPPORT. ELBOW	01/01/1997-
054	33Q5641	ENTRY CONNECTOR H2O	01/01/1997-
055	33Q5690	BUSHING SUPPORT	01/01/1997-
056	33Q0031	SOUND REDUC. CONNECT.	01/01/1997-
057	33T3720	NOZZLE	01/01/1997-
058	35B7981	INSULATION PANEL COVER	01/01/1997-
059	35C5351	INSULATION PANEL COVER	01/01/1997-
060	35B8501	INS. PANEL COVERING	01/01/1997-
061	35C7300	BACK PANEL	01/01/1997-
062	35C6520	RH PANEL	01/01/1997-
063	30Q1100	COMPON. PROTECTION	01/01/1997-
064	3033400	FILTER	01/01/1997-
065	35Q9032	EL. BOARD	03/12/1999-
066	35Q2380	END RUN PROTECTION	01/01/1997-
069	35S6082	FLAT BRACKET	01/01/1997-
070	35V8081	LAMPHOLDER SUPPORT	01/01/1997-
071	32D0260	LOCK NUT PG29	01/01/1997-
072	33Q5921	CONNECTOR	01/01/1997-
073	32D1740	TERMINAL	24/01/2002-
074	32D0911	"OMEGA" BRACKET	01/01/1997-
075	35X2110	DRAIN PIPE	01/01/1997-
076	35X0550	PIPE	01/01/1997-
077	33M1170	PIPE	01/01/1997-
078	36A3961	DRAIN PIPE	01/01/1997-
079	36A3400	DRAIN	01/01/1997-
080	36C3220	FOOT S/S ASSEMBLY	23/01/1998-
082	36C0380	BUSHING	01/01/1997-
083	36G5320	SPRING	01/01/1997-
084	51AD938	TROLLEY	01/01/1997-
085	6300592	VALVE	31/12/2005-
086	36G6740	COUNTERWEIGHT	01/01/1997-
087	36G6041	END RUN PIN	20/01/2000-
088	32X0140	GROMMET Ø13,5-Ø25	01/01/1997-
089	36Q1171	LOCKNUT M16X1.5	01/01/1997-
090	32Z5880	THERMOSTAT 30-90°C	01/01/1997-
091	37Q3011	GASKET	01/01/1997-
092	3151730	GASKET	01/01/1997-
093	37Q7840	GASKET	01/01/1997-
094	30A2511	CONTROL PANEL	01/01/1997-
095	32Z7170	INDEP. ASSEMBLY SUPPORT	01/01/1997-
096	33Q6370	NOZZLE SUPP. CONNECT.	01/01/1997-
097	3170110	ACCOMODATION Ø6	01/01/1997-
098	32V1030	RELAY 0.3-0.5 A	08/04/1998-
099	30G2451	DOOR	01/01/1997-
100	30G2460	OVEN COUNTER DOOR	01/01/1997-
101	33Q6091	H2O FILTER 3/4"	01/01/1997-
102	35V3830	PLATE	01/01/1997-
103	36D8360	MICROSWITCH ROD	01/01/1997-
104	36M4122	DOOR HINGE	01/01/1997-

Pos	Code	Description	Info
105	31X0170	PIN FT Ø6	01/01/1997-
106	35C5260	BACK PANEL PROTECTION	01/01/1997-
107	37Q7633	DOOR GASKET	08/02/1999-
108	37Q7621	GASKET	19/05/1999-
109	35V6131	RH SLIDE FROFILE	11/02/1997-
110	35Q8871	" L " SHAPED SPLASH GUARD	01/01/1997-
111	35V6141	LH SLIDE PROFILE	11/02/1997-
112	35V8072	LAMP HOLDER BOX	01/01/1997-
113	35V6150	PERFIL "U"	01/01/1997-
114	6300591	VALVE	31/12/2005-
115	32Z1983	PIN PROBE PT100	08/03/1999-
117	36G7140	SPRING	01/01/1997-
118	32Z6041	PT100 PROBE	01/01/1997-
119	32Z6090	FILTER	01/01/1997-
120	32Z6100	FILTER	01/01/1997-
121	36M0820	LOCK HOUSING	01/01/1997-
122	3111950	SAFETY THERMOSTAT	29/10/2008-
123	35R1660	BACK PANEL	01/01/1997-
124	32Z6983	ELECTRONICS CARD 230V	07/04/2005-
125	33Q0730	CONNECT.	01/01/1997-
126	32Z6191	TEMP.PROBE PT100	01/01/1997-
127	35V5820	" L " SHAPED BAR	01/01/1997-
128	35V8590	PROBE SUPPORT	01/01/1997-
129	36D7062	PIN	07/10/2014-
130	36C1380	BUSHING PROTECT. PROBE	01/01/1997-
131	33Q3210	PLUG	01/01/1997-
132	33Q5381	RING SUPPORT	01/01/1997-
133	33Q5390	"RING 3/4""	01/01/1997-
134	33Q4120	CONNECT. M16X1.1M10	14/11/1999-
135	33Q5610	RING M16X1.5	01/01/1997-
136	33Q5630	CONNECT MF 3/8" - M16	01/01/1997-
137	33Q5650	SOCKET F3/4 M1/2 Ø30X25	01/01/1997-
138	35S5330	CABLE CLAMP	01/01/1997-
139	37M5840	DOOR GLASS	01/01/1997-
142	33Q6081	CONNECTOR Ø 0.7	01/01/1997-
143	36M0860	LOCK SPACER	01/01/1997-
144	3190040	SCREW M6X20	01/01/1997-
145	35S2920	FLAT BRACKET	01/01/1997-
146	36Q0550	LOCK NUT M12X1.5	01/01/1997-
147	3120100	WASHER	01/01/1997-
148	32D0210	FAIRLED	01/01/1997-
149	36M6380	OVEN DOOR HANDLE	05/05/1999-
150	36E2530	PLASTIC INSERT LOCK	01/01/1997-
151	35Q2360	SUPP. END RUN PROTECTION	01/01/1997-
152	32G1711	HEATING EL.	01/01/1997-
153	35Q9021	HEATING ELEMENT GUARD	01/01/1997-
154	35Q6360	THERMORES. PROTECTION	01/01/1997-
155	35S9921	"L" BRACKET	01/01/1997-
156	36D8492	FEELER SUPPORT	01/01/1997-
157	37Q3220	GASKET	01/01/1997-
158	3100930	RELAY	01/01/2008-

Pos	Code	Description	Info
159	33Q6100	LOWER DRAIN PIPE	01/01/1997-
160	6300420	LOCK ASS. Y	01/01/1997-
161	35S6361	L" SHAPED BAR	01/01/1997-
162	35V8321	RHPAN EL STI FFENING	01/01/1997-
163	35X3760	DRAIN PIPE	01/01/1997-
164	30Z1880	DRAIN PIPE 1250X170	01/01/1997-
165	30T1502	COMB. CHAMBER SUPPORT ASS.Y	07/03/1997-
166	32Q3620	ELECTRIC CABLES FCV401EDM	01/01/1997-
167	36Q1550	CAP Ø11	22/01/1998-
168	36E0600	FOOT SUPPORT 2"	23/01/1998-
169	35Y0570	WATER ENTRY PROFILE	01/06/1998-
170	6300187	DOOR ASSEMBLY FCV401	01/01/1997-