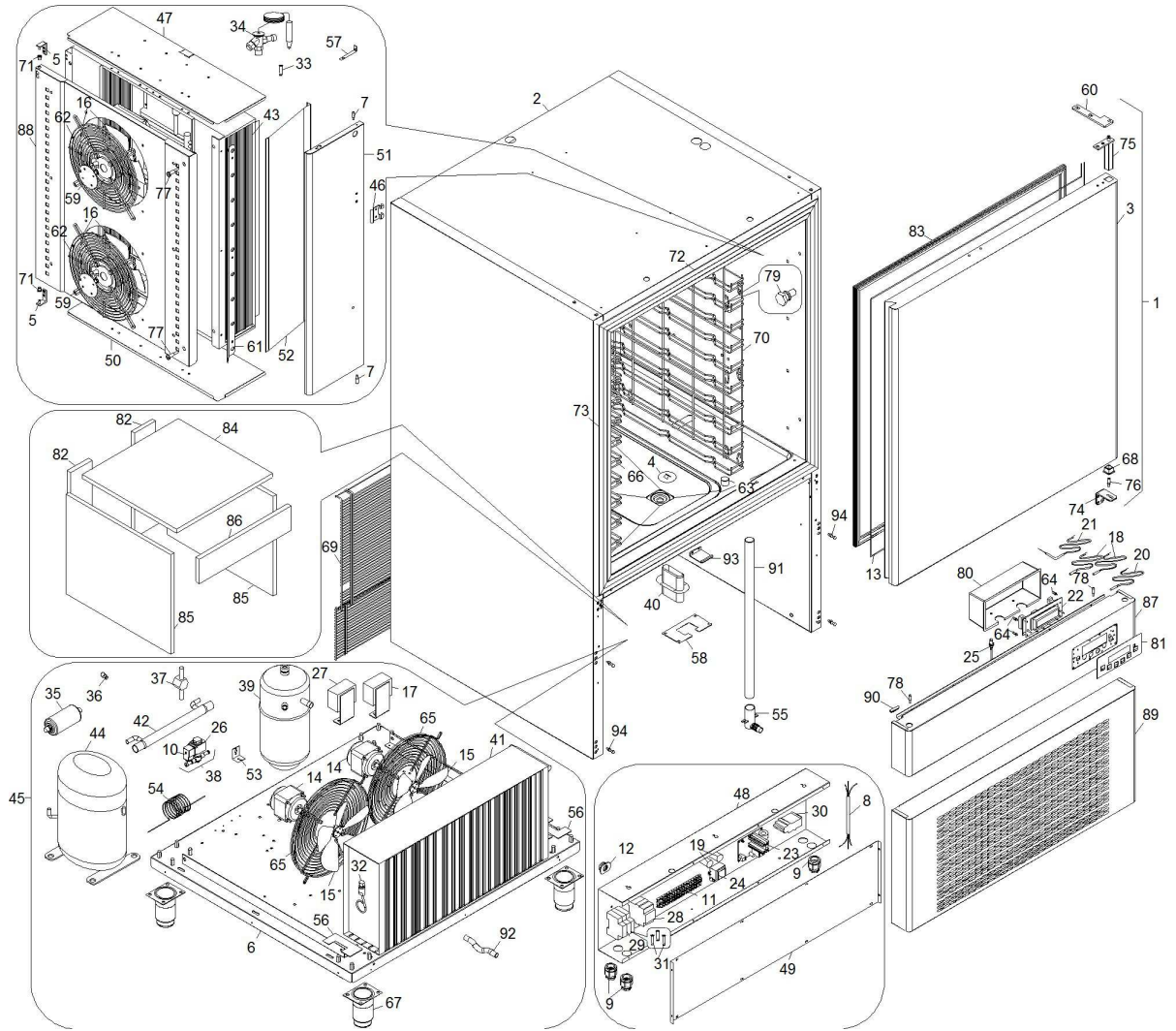




IS102S

Edition 20120622-



| Pos | Code | Description | Info |
|-----|---------|-----------------------|-------------|
| 001 | 6014920 | DOOR UNIT | 01/03/2005- |
| 002 | 3186980 | FRAME | 23/12/2011- |
| 003 | 30F1150 | DOOR | 01/03/2005- |
| 004 | 30G3710 | PLUG | 01/03/2005- |
| 005 | 30T2690 | BRACKET | 01/03/2005- |
| 006 | 30W5100 | TRAY X ASSEMBLY | 01/03/2005- |
| 007 | 31X0330 | PIN | 22/06/2012- |
| 008 | 32A1960 | POWER SUPPLY CABLE | 01/03/2005- |
| 009 | 32D0220 | CABLE CLAMP Ø 16 | 01/03/2005- |
| 010 | 32D0710 | THREE-POLE CONNECTOR | 01/03/2005- |
| 011 | 32D1300 | TERMINAL BOARD | 01/03/2005- |
| 012 | 32D1350 | CABLE CLAMP | 01/03/2005- |
| 013 | 32G3500 | RESISTOR | 01/03/2005- |
| 014 | 32M5840 | FAN MOTOR | 01/03/2005- |
| 015 | 32M5850 | FAN | 01/03/2005- |
| 016 | 32M7050 | FAN | 01/03/2005- |
| 017 | 32V0190 | PRESSURE-SWITCH | 01/03/2005- |
| 018 | 32V3730 | NTC PROBE | 01/03/2005- |
| 019 | 32V5380 | CONDENSER | 01/03/2005- |
| 020 | 32V6010 | EVAPORATOR PROBE NTC | 01/03/2005- |
| 021 | 32V7960 | PIN PROBE | 01/03/2005- |
| 022 | 3185580 | ELECTRONIC CARD | 08/06/2010- |
| 023 | 3080200 | PART.MODULE | 30/06/2006- |
| 024 | 32V8320 | TRANSFORMER | 01/03/2005- |
| 025 | 32W3460 | MICROSWITCH | 08/06/2006- |
| 026 | 32Z2750 | COIL | 01/03/2005- |
| 027 | 32Z5890 | PRESSURE-SW | 01/03/2005- |
| 028 | 32Z9250 | SWITCH | 01/03/2005- |
| 029 | 32Z9500 | FUSE-HOLDER | 01/03/2005- |
| 030 | 32Z9880 | RELAY | 01/03/2005- |
| 031 | 32Z9890 | FUSE | 01/03/2005- |
| 032 | 3185180 | PRESSURE-SWITCH | 08/06/2010- |
| 033 | 33A0300 | BORE | 01/03/2005- |
| 034 | 33A0500 | THERMOST. VALVE | 01/03/2005- |
| 035 | 33A0350 | FILTER | 01/03/2005- |
| 036 | 33A1200 | AUXIL.VALVE | 01/03/2005- |
| 037 | 33D1950 | FLOW-ON LIGH | 01/03/2005- |
| 038 | 33G0120 | VALVE | 01/03/2005- |
| 039 | 33G1180 | TRAY | 01/03/2005- |
| 040 | 33Q4390 | COUPLING TUBES | 01/03/2005- |
| 041 | 34D6960 | CONDEN.+BAFF | 01/03/2005- |
| 042 | 34D7590 | COOLER | 01/03/2005- |
| 043 | 34D8670 | EVAPORATOR | 01/03/2005- |
| 044 | 34D9520 | COMPRESSOR R404A (BT) | 01/03/2005- |
| 045 | 3185570 | MOTOR UNIT | 08/06/2010- |
| 046 | 35C9840 | PROBE SUPPORT | 01/03/2005- |
| 047 | 3136740 | TOP EVAP. HEAD | 07/03/2008- |
| 048 | 35L3840 | PANEL BOARD | 01/03/2005- |
| 049 | 35L5200 | COVER | 01/03/2005- |
| 050 | 3136750 | BOTTOM EVAP. HEAD | 07/03/2008- |
| 051 | 3221840 | RISER | 22/06/2012- |

| Pos | Code | Description | Info |
|-----|---------|------------------|-------------|
| 052 | 35P9610 | CONVEYOR | 01/03/2005- |
| 053 | 35R1500 | SUPPORT | 01/03/2005- |
| 054 | 35X0560 | CAP.DANFOSS | 01/03/2005- |
| 055 | 3057470 | CONDENS. DRAIN | 01/07/2006- |
| 056 | 35Y0980 | PLATE | 01/03/2005- |
| 057 | 35Y2000 | SUPPORT | 01/03/2005- |
| 058 | 35Y2550 | PLATE | 01/03/2005- |
| 059 | 35Y3790 | PROTECTION MOTOR | 01/03/2005- |
| 060 | 3082260 | TOP BRACKET | 23/12/2011- |
| 061 | 35Y9490 | CONVEYOR | 01/03/2005- |
| 062 | 36A4290 | FRIDGE FAN GUARD | 01/03/2005- |
| 063 | 36C2690 | PIN | 01/03/2005- |
| 064 | 36C2750 | SPACER | 01/03/2005- |
| 065 | 36C3061 | FAN.PROT. | 01/03/2005- |
| 066 | 3129410 | RACK | 05/10/2007- |
| 067 | 3137690 | FOOT | 01/12/2009- |
| 068 | 36C5620 | PLUG | 01/03/2005- |
| 069 | 36C5710 | PROTECT GRID | 01/03/2005- |
| 070 | 3129400 | RH RACK | 05/10/2007- |
| 071 | 36E0410 | BUSHING | 01/03/2005- |
| 072 | 3187130 | FRAME TRIM | 23/12/2011- |
| 073 | 3187120 | FRAME TRIM | 23/12/2011- |
| 074 | 3059930 | BOTTOM BRACKET | 16/06/2006- |
| 075 | 36G6520 | HINGE | 01/03/2005- |
| 076 | 36G9410 | PIN | 01/03/2005- |
| 077 | 36M3200 | HANDLE | 01/03/2005- |
| 078 | 36G9570 | PIN | 23/12/2011- |
| 079 | 36M7820 | PIN | 01/03/2005- |
| 080 | 36Z2260 | CARD PROTECTION | 01/03/2005- |
| 081 | 3178830 | SILK-SCREE.PANEL | 23/02/2010- |
| 082 | 37Q4580 | SOUND-PROOFING | 07/12/2005- |
| 083 | 37Q5380 | GASKET | 01/03/2005- |
| 084 | 37Q5390 | SOUND-PROOFING | 01/03/2005- |
| 085 | 37Q5400 | SOUND-PROOFING | 01/03/2005- |
| 086 | 37Q5410 | SOUND-PROOFING | 01/03/2005- |
| 087 | 3192260 | FRONT PANNEL | 23/12/2011- |
| 088 | 3193780 | EVAP. GUARD | 16/12/2010- |
| 089 | 3198670 | PROTECTION | 23/12/2011- |
| 090 | 3078190 | HOLE PLUG | 16/06/2006- |
| 091 | 3069890 | PIPE KRYSTAL | 02/07/2006- |
| 092 | 35X1640 | DRAIN TRAP | 01/07/2006- |
| 093 | 3192300 | BRACKET | 12/11/2010- |
| 094 | 36G1140 | PIN | 23/12/2011- |