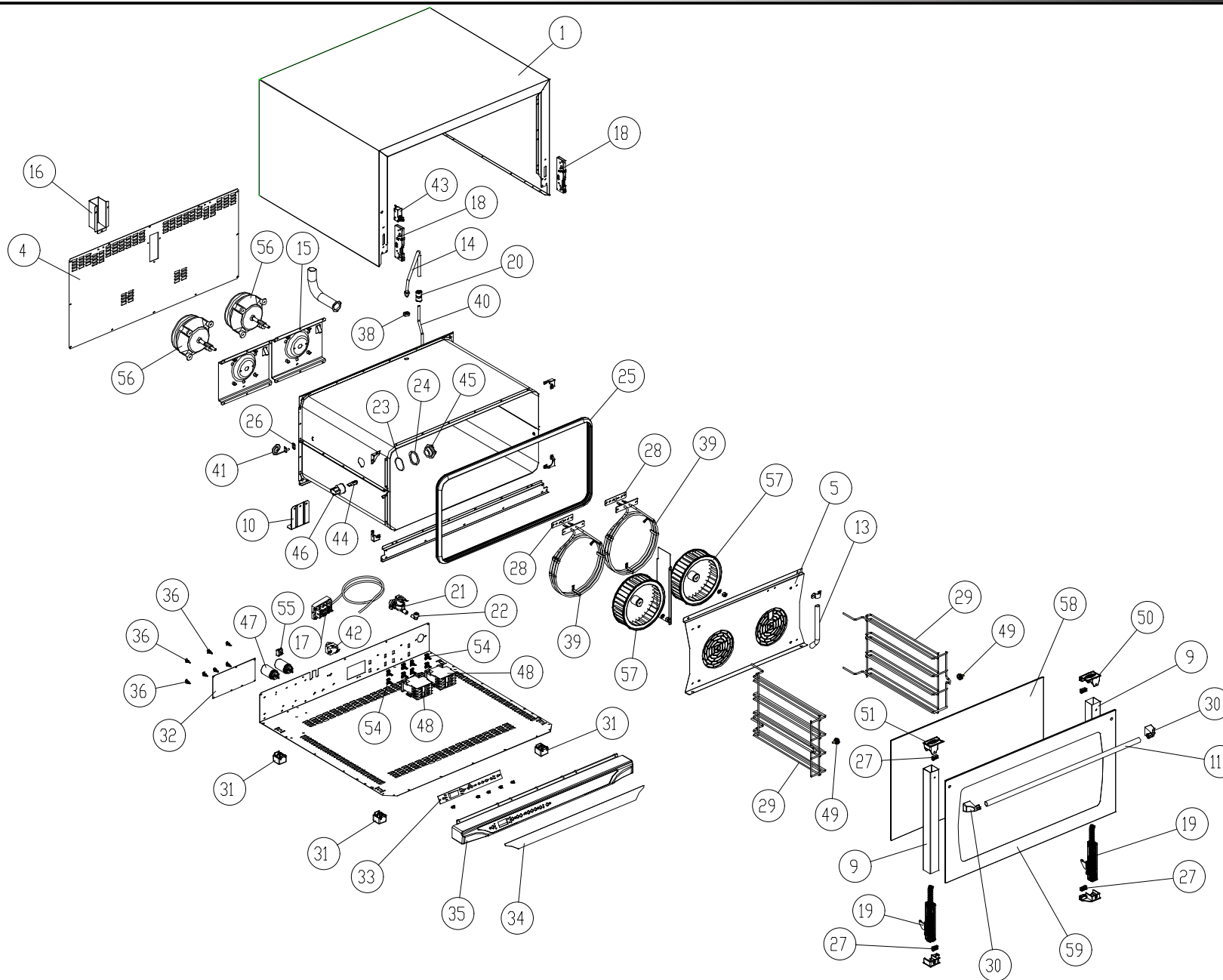


MOD: XF195

EXPLODED VIEW DISEGNO ESPLOSO



LEGEND - LEGENDA

1	ODT285B1	56	VNI000B0
4	OFI095A1	57	VNI025A2
5	OG1125B1	58	VTI070A0
9	OH1425B0	59	VTI071A2
10	OH1455A0		
11	OH1930A0		
14	OH1990A1		
15	OH2015A0		
16	VM1065A0		
17	CE1130A0		
18	CR1000A0		
19	CR1025A0		
20	EL1055A0		
21	EL1085A0		
22	EL1195A0		
24	GN1065A1		
25	GN1110A2		
26	GN1120A0		
27	GN1130A0		
28	GN224		
29	GRL1025A0		
30	MG1015A0		
31	PD1001A0		
32	PE1175B0		
33	PE1195C1		
34	PE1255A1		
35	PE1315A0		
36	PE1345A1		
38	RC1170A1		
39	RS1090A1		
40	TB008		
41	TR1015A0		
42	TR255B		
43	VE086B		
44	VE1005A1		
45	VE1010A1		
46	VE1015A1		
47	VE221		
48	VE1095A0		
49	VII035A1		
50	VM1045B0		
51	VM1046B0		
54	VM1075A1		
55	VM250		

MOD: XF195

EXPLODED VIEW DISEGNO ESPLOSO



DESCRIZIONE CODICI

1	OD1285B1	MANTELLO INOX L.M. ROSSELLA
4	OF1095A1	SCHIENA ZINCATA L.M. ROSSELLA
5	OG1125B1	CARTER ARIA INOX L.M. ROSSELLA
9	OH1425B0	COLONNINA SX/DX PORTA L.M. ARIANNA-ROSSELLA
10	OH1455A0	STAFFA SOSTEGNO MUFFOLA L.M.
11	OH1930A0	TUBO MANIGLIA D-est=18 Sp=1 L=718 INOX L.M. 800
14	OH1990A1	TUBO ESTERNO UMIDITA + RACCORDO INOX SALDATO LM
15	OH2015A0	PROFILO SOSTEGNO MOTORE XV203G/403G L.M.
16	VM1065A0	CUFFIA COPRI CAMINO FUMI L.M.
17	CE1130A0	CAVO 5x1,5mmq H07RN-F L=1,5m + MORSI K1/6
18	CR1000A0	ATTACCO CERNIERA PORTA FORNO RIBALTA L.M.
19	CR1025A0	CERNIERA PORTA FORNO RIBALTA L.M. ROSSELLA
20	EL1055A0	RIDUZIONE J.G. DA D=10 A D=8 PM201008E
21	EL1085A0	ELETR. SING. ATT. J.GUEST INCORPORATO CON RID.MARR.TARA
22	EL1195A0	RACCORDO A GOMITO CON J.GUEST CODOLO D8 - D8
24	GN1065A1	GUARNIZIONE PORTALAMPADA DE=53.2 DI=44.2 SP=3.2 PTFE P
25	GN1110A2	GUARNIZIONE PORTA PROFILO 248 LINEMISS-XCH030
26	GN1120A0	GUARNIZIONE SONDA DI TEMPERATURA NTC
27	GN1130A0	GUARNIZIONE SUPPORTO VETRO L.M. L=23mm
28	GN224	GUARN.PTFE+CARB 100x22x0,8sp-c/fori 1999
29	GRL1025A0	GRIGLIA LATERALE DX/SX CROMATA 4TG 600x400 L.M. ROSSELL
30	MG1015A0	TERMINALE MANIGLIA L.M.
31	PD1001A0	PIEDINO 35X35 H26 PLASTICA+GOMMA GRIGIO
32	PE1175B0	SCHEDA POTENZA L.M. DYNAMIC 230V
33	PE1195C1	SCHEDA CONTROLLO L.M. DYNAMIC SERIE 1 F.W. 2.05
34	PE1255A1	MASCHERINA SERIGRAFATA PE 180° L.M. 800 DYNAMIC
35	PE1315A0	CRUSCOTTO COMANDI IN PLASTICA L.M. 800
36	PE1345A1	DISTANZIALE NYLON INCASTRO MASCHIO-INCASTRO MASCHIO
38	RC1170A1	DADO M14 H=8 CH=22 INOX
39	RS1090A1	RESISTENZA CIRCOLARE D=230 3 SPIRE H78 2900W 230V
40	TB008	TUBO PE 7,93x4,75 TRASPARENTE
41	TR1015A0	SONDA DI TEMP. NTC UL
42	TR255B	TERMOSTATO SIC.+UNIPOL.330°C Ty95H L=1300mm
43	VE086B	MICROINTERRUTTORE PORTA MF09 16A
44	VE1005A1	LAMPADA ALOGENA 40W 230V
45	VE1010A1	VETRO COPRILAMPADA TEMPERATO ANTISHOCK
46	VE1015A1	PORTA LAMPADA SERIE 2 PER LAMPADA ALOGENA
47	VE221	CONDENS.ICAR PRL 5uF 450V FASTON
48	VE1095A0	TELERUTTORE GE 25A 230V 50/60 Hz CL01A400T6
49	VI1035A1	NOTTOLINO M6x12,5 CON TAGLIO OTT.CROM.FERMA GRIGLIE X
50	VM1045B0	TAPPO SUP. DX COLONNINA PORTA VETRO INTERNO L.M.
51	VM1046B0	TAPPO SUP. SX COLONNINA PORTA VETRO INTERNO L.M.
54	VM1075A1	CLIP DI FISSAGGIO PER TELERUTTORI
55	VM250	MORSETT.A.PETTINE

56	VN1000B0	MOTORE COND.5uF 200W ALB.M8 CONN.5 POLI
57	VN1025A2	VENTOLA D=196 H=61 38 PALE INOX DADO M8
58	VT1070A0	VETRO INTERNO 715x414x4 BETFL L.M. ROSSELLA
59	VT1071A2	VETRO ESTERNO SER. GIALLO 798x424x5 TFL L.M. ROSSELLA

DESCRIPTION

1	OD1285B1	STAINLESS STEEL COVER L.M. ROSSELLA
4	OF1095A1	ZINCED BACK PANEL L.M. ROSSELLA
5	OG1125B1	STAINLESS STEEL FAN GUARD L.M. ROSSELLA
9	OH1425B0	LEFT/RIGHT DOOR COLUMN L.M. ARIANNA-ROSSELLA
10	OH1455A0	L.M. MUFFLE SUPPORT
11	OH1930A0	STAINLESS STEEL HANDLE TUBE D-est=18 Sp=1 L=718 L.M. ELENA-
14	OH1990A1	EXTERNAL WATER PIPE + STAINLESS STEEL WELDED CONNECTION
15	OH2015A0	FORM FOR MOTOR SUPPORT XV203G/403G L.M.
16	VM1065A0	PLASTIC COVER FOR FUMES CHIMNEY L.M.
17	CE1130A0	CABLE 5x1,5mmq H07RN-F L=1,5m + TERMINAL BOX K1/6
18	CR1000A0	HINGE LATCH L.M.
19	CR1025A0	HINGE L.M. ROSSELLA
20	EL1055A0	J.G. REDUCTION FROM D=10 TO D=8 PM201008E
21	EL1085A0	WATER SINGLE ELECTROVALVE WITH RAPID CONNECTION & WAT
22	EL1195A0	ELBOW UNION WITH J.GUEST TERMINAL D8 - D8
24	GN1065A1	SEAL FOR LAMP GLASS COVER (PURE PTFE) DE=53.2 DI=44.2 TH=
25	GN1110A2	DOOR GASKET PROFILE 248 LINE MISS-XCH030
26	GN1120A0	TEMPERATURE PROBE NTC SEAL
27	GN1130A0	INT. GLASS SEAL L.M. L=23mm
28	GN224	PTFE+CARB 100x22x0,8sp-w/holes 1999 GASKET
29	GRL1025A0	RIGHT/LEFT LAT.GRID CHROMIUM-PLATED 4 TRAYS 600x400 L.M
30	MG1015A0	HANDLE END L.M.
31	PD1001A0	FOOT 35X35 H26 GREY PLASTIC+RUBBER
32	PE1175B0	POWER CARD L.M. DYNAMIC 230V
33	PE1195C1	CONTROL CARD L.M. DYNAMIC SERIE 1 F.W. 2.05
34	PE1255A1	STICKER WITH SERIGRAPHY PE 180° L.M. 800 DYNAMIC
35	PE1315A0	PLASTIC CONTROL PANEL L.M. 800
36	PE1345A1	NYLON SPACER MALE-MALE H=14
38	RC1170A1	STAINLESS STEEL NUT M14 H=8 CH=22
39	RS1090A1	CIRC.HEAT. ELEMENT D=230 3 TURNS H78 2900W 230V
40	TB008	TRANSPARENT TUBE PE 7,93x4,75
41	TR1015A0	TEMPERATURE PROBE NTC UL
42	TR255B	SAFETY THERMOSTAT+UNIPOL. 330°C Ty95H L=1300mm
43	VE086B	DOOR MICROSWITCH MF09 16A
44	VE1005A1	HALOGEN LAMP 40W
45	VE1010A1	
46	VE1015A1	LAMP HOLDER SERIE 2 FOR HALOGEN LAMP
47	VE221	ICAR CONDENSER PRL 5uF 450V FASTON
48	VE1095A0	REMOTE CONTROL SWITCH GE 25A 230V 50/60 Hz CL01A400T6
49	VI1035A1	CHROMIUM PLATED BRASS NUT M6x12,5 TO STOP LATERAL SUP
50	VM1045B0	RIGHT UPPER LID FOR COLUMN FOR INTERNAL GLASS L.M.
51	VM1046B0	LEFT UPPER LID FOR COLUMN FOR INTERNAL GLASS L.M.
54	VM1075A1	PLASTIC CLIP TO FIX CONTACTORS
55	VM250	"COMB" TERMINAL BOARD

56	VN1000B0	MOTOR COND.5uF 200W ALB.M8 CONN.5 TERMINALS
57	VN1025A2	FAN D=196 H=61 38 BLADES STAINLESS STEEL NUT M8
58	VT1070A0	INTERNAL GLASS 715x414x4 BETFL L.M. ROSSELLA
59	VT1071A2	