



www.santos.fr



Centrifugal Juicer # 50 "Santos Juicer"

- Easily extracts the maximum quantity of pure juice and vitamins from most fruits and vegetables
- Ideal for juice bars and health food stores

Large capacity juicer

- Up to 25 gallons (100 liters) of apple juice per hour
- Can juice a whole apple or tomato or several carrots in a few seconds
- Saves time : no need to cut fruits or vegetables into smaller pieces (extra wide feeding chute : 3" / 79.5mm)
- Continuous pulp ejection into a large polyethylene container

Easy to use and clean

- Nothing to screw or unscrew
- Easy and safe locking and unlocking system with a simple and attractive handle in front of the cover
- Easy assembly and disassembly of the three main removable parts : cover, filter-basket and bowl

Heavy duty commercial motor

- Asynchronous, powerful (800W), very quiet

Safety Features

- Original locking arms and instant braking system when opened

Durable and attractive design

- Made of sturdy and food safe quality materials : stainless steel (bowl, filter-basket), black polyethylene (pusher, pulp container), polycarbonate (cover), black rubber (seals)

Compact size

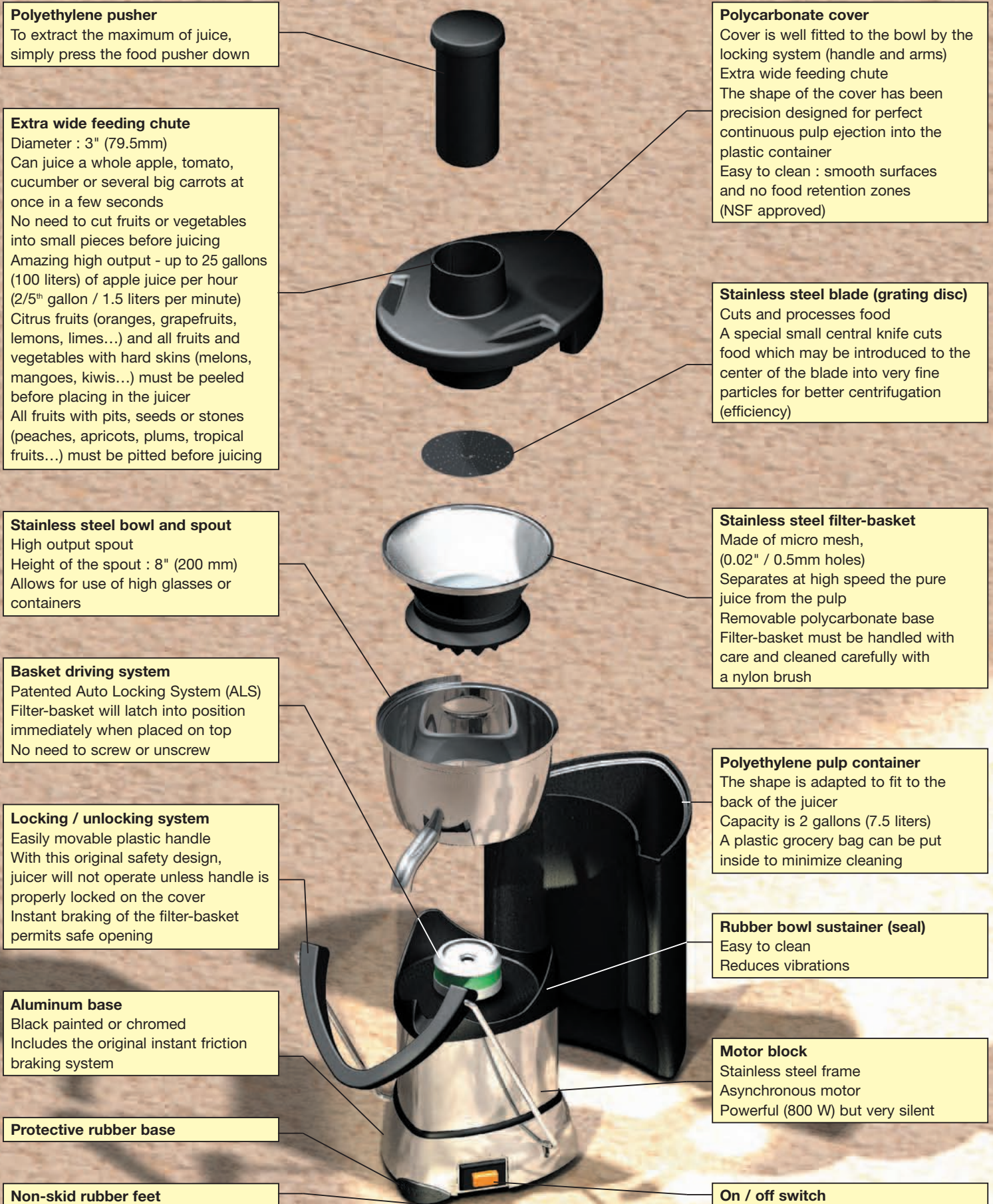
- Portable and easy to move

MADE IN FRANCE
Internationally patented



Santos Juicer

Introducing the Santos Juicer





Using the Santos Juicer

If you serve fresh juice, you need this machine !

- Juice bars, health food stores, hotels, bars, restaurants, cafeterias, ice cream stores, institutions (hospitals), and even..... at home
- You will like the compact size and attractive design of this juicer, its powerful yet quiet motor, and its quality construction (stainless steel, aluminium, heavy-duty plastic, rubber)

You will appreciate the original features of the Santos Juicer

- Juicer can perform continuous production or glass by glass production



Extra wide feeding chute

- Diameter : 3" (79.5mm)
Can juice a whole apple, tomato, peeled orange or several big carrots at once in a few seconds



Stainless steel filter-basket

- Easy to remove and to put in position without any tool
(ALS : Auto Locking System)

Continuous pulp ejection

- Ejects pulp into a large polyethylene container



Original locking system

- Unique locking arms and instant breaking system when opening



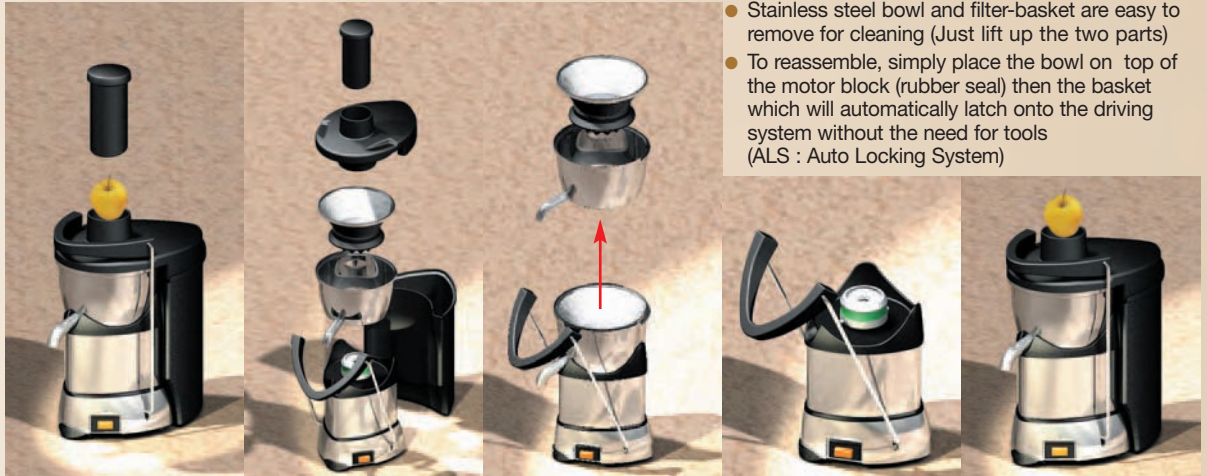
Easily extract 10 to 25 gallons (40 to 100 liters) of pure juice per hour

Average yield of 70% of juice : 7 liters of juice for 10 kg of fruits

- The Santos Juicer can produce pure juice and vitamins from most of fruits and vegetables
- Save time and labor : no need to cut food into small pieces before juicing :
 - Apples, carrots, tomatoes, cucumbers, celery, cabbage, onions, beets, pears, spinach, wheat grass....
 - Citrus fruits : oranges, grapefruits, lemons and limes (must be peeled)
 - Melons, pineapples, mangoes, kiwis, bananas, (must be peeled)
 - Peaches, apricots, plums, tropical fruits (must be pitted)
 - Berries : strawberries, raspberries, blackberries, blueberries...



Assembly / disassembly

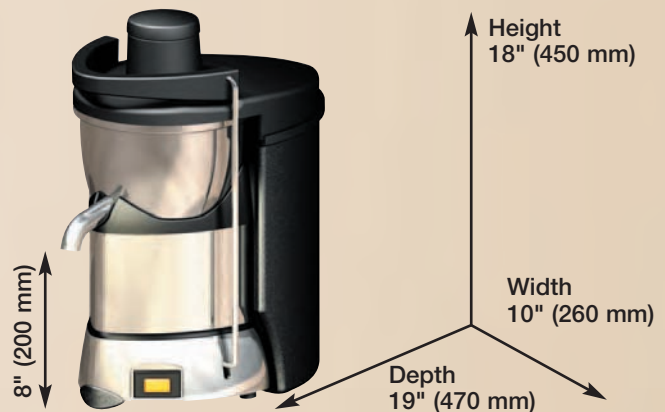


- Stainless steel bowl and filter-basket are easy to remove for cleaning (Just lift up the two parts)
- To reassemble, simply place the bowl on top of the motor block (rubber seal) then the basket which will automatically latch onto the driving system without the need for tools (ALS : Auto Locking System)

	Juicer in use	Juicer disassembled View of all removable parts	Juicer open Without cover Stainless steel bowl and basket are easy to remove	Juicer open Without bowl and basket	Juicer ready to use
Locking system Plastic handle 2 S/S arms	Locked In position Vertical	Unlocked Bent down Bent down	Unlocked Bent down Bent down	Unlocked Bent down Bent down	Locked In position Vertical
SAFETY Power switch Motor Friction brake	On On Off	Off Off On	Off Off On	Off Off On	On / Off On/ Off Off

Technical specifications

Motor		
Single phase	100-120V - 50/60 Hz- 800 W 220-240V - 50/60 Hz- 600 W	
Speed	3300 RPM (60 Hz) 3000 RPM (50 Hz)	
Weight	Net weight	35 lbs (16 Kg)
	Packed	38 lbs (17 Kg)
Dimensions	Juicer	Packed (box)
Height	18" (450 mm)	20" (500 mm)
width	10" (260 mm)	12" (300 mm)
Depth	19" (470 mm)	21" (510 mm)
Height of the spout	8" (200 mm)	
Shipping cube	2.9 cubic feet (0.08m ³)	



Safety - Standards - Hygiene

This Juicer has been designed to comply with the most stringent international safety and hygiene regulations in conformity with the standards, especially :

- Machinery directive 98/37/EC
- Electromagnetic compatibility 89/336/EEC
- Electrical equipment designed for use within certain voltage limits "low voltage" 73/23/ECC
- Harmonized European standards EN 292-1 et 2--- EN 60204-1 : 1998

Mechanical safety

- A friction brake immediately stops the basket when opening

Electrical safety

- On / Off interlock switch detects overloading and no voltage
- All mechanical parts are ground connected
- All equipment is perfectly controlled after assembly (special electrical testing bay)

- CE European standards

- GS (Germany) controlled by LNE laboratory
- UL (USA) and cUL (Canada)
- NSF (USA)

Thermal safety

- Motor protected by internal thermal detector.
- Motor is thermal disconnected from the body of the juicer to protect user against heat

Acoustic safety

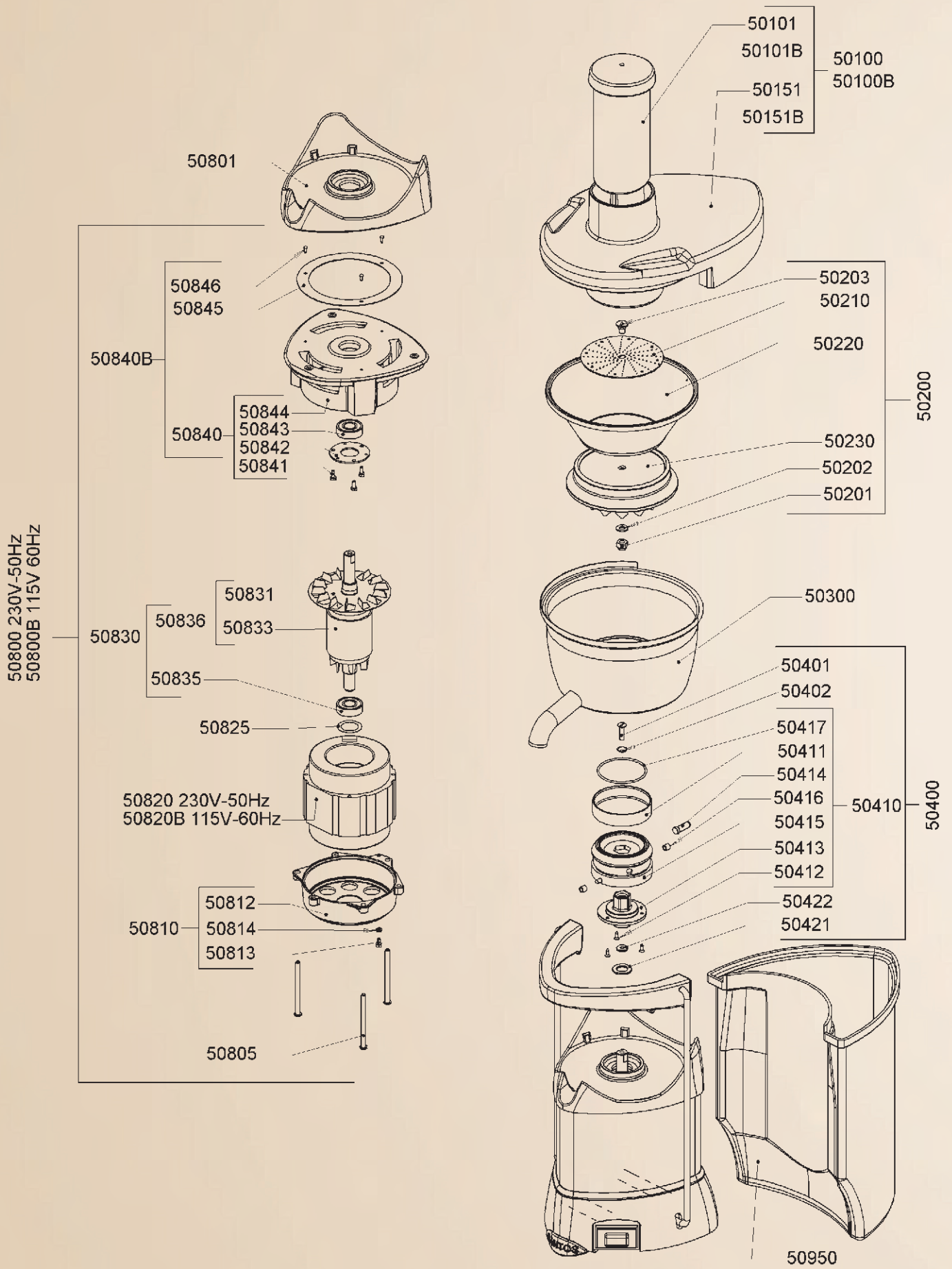
The asynchronous motor with direct driving is particularly silent

Hygiene

All removable parts (with the exception of the base) can be put in a dishwasher or easily cleaned with hot soapy water



Centrifugal juice extractor # 50



Centrifugal juice extractor # 50

