

For internal use only!

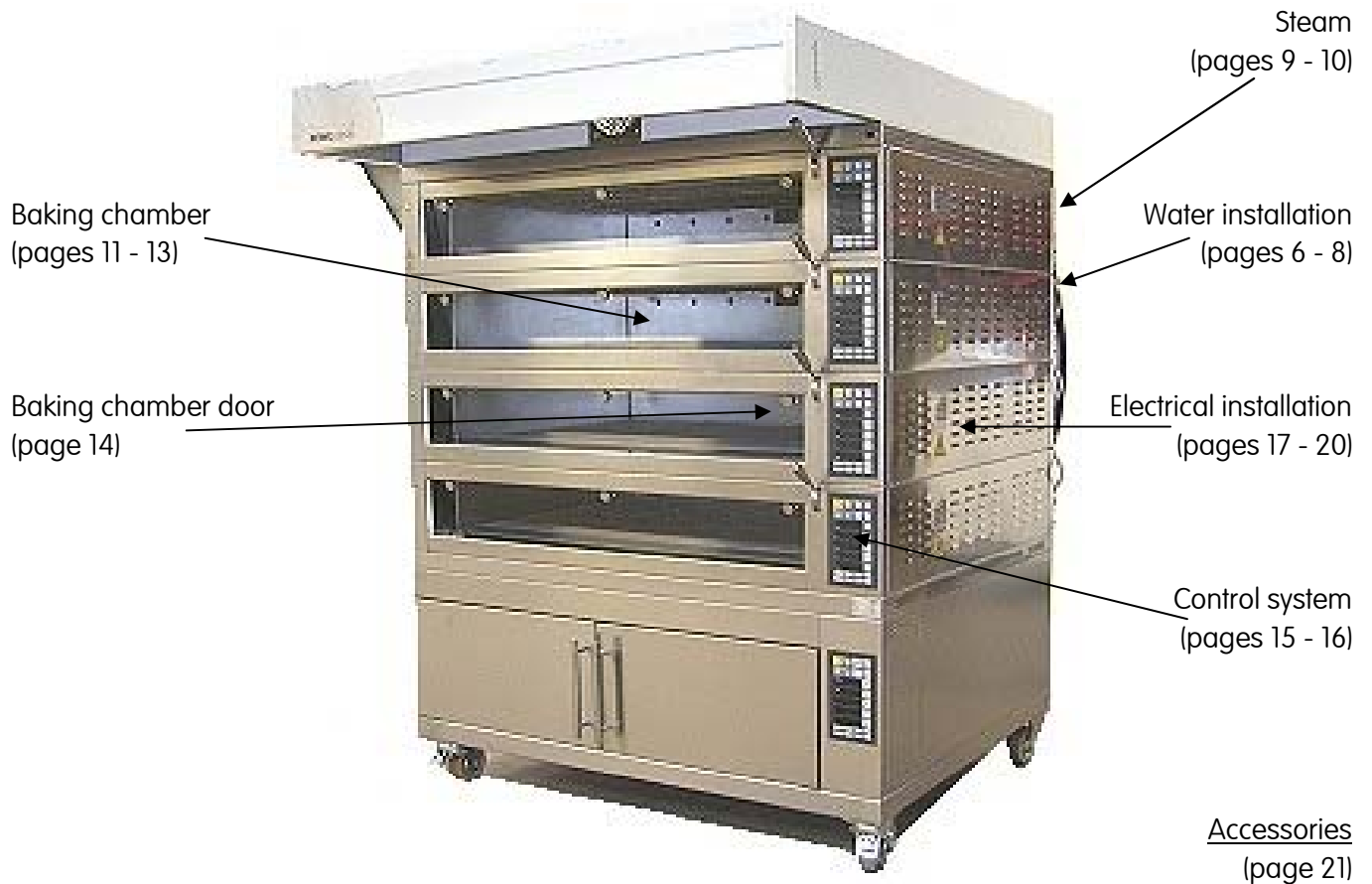
Multi-deck oven
MIWE condo
4.1208

Version: 0.1

No part of this documents must by reproduced or processed, copied, or distributed using electronic systems without the prior written consent of the publisher (MIWE Michael Wenz GmbH) in any form (print, foto copy, microfilm).

The same holds true for the simple forwarding of these instructions or the disclosure of the contents.

MIWE Michael Wenz GmbH
P.O.D. 20, D-97448 Arnstein, Germany
Phone +49-(0)9363-666
Fax +49-(0)9363-68 8422
email originalteilede@miwe.de
www.miwe.com



Water installation

Position number	Short descr. of the item	Item No.	Page
1	Wasserfilter-3/8"Ax3/8"l-MS	507532.00	6
2	Filtertasse MS	507532.01	6
3	Befestigungswinkel Wasserfilt.	507532.04	6
4	Filz-Siebeinsatz	507532.02	6
5	Nippel-red. RG l-Kon 3/4x1/2	507518.05	6
6	Red.Muffe*1542*MS a/i 3/8x1/2	508650.00	6
7	Schlauch-Anschluß 3/8"x 245	507439.00	6
8	T-Stück MS 3 x 3/8"α	507535.00	6
9	Magnetventilstecker SVS 230 V	504974.01	7
10	Ventil.Magn.l- 3/8"-D-230/50 BJ	505212.45	7
11	Magnetventilwinkel Buschjost	071482.20	7
12	Wasserzähler "Flowmeter FH20" 1/4"	507570.02	7
13	Gerätesteckdose Wasserzähler	505212.08	7
14	Hahnverl.*1513* Rotguss 3/8"x 25	508658.00	7
15	Nippel-red. MS 2xKon 3/8x1/4	507536.02	7
16	SPRITZRO.ZULEIT.kpl lang re	071284.01	8

Steam

Position number	Short descr. of the item	Item No.	Page
17	Schlauch-Dampf (3/4") 19x6.5	507431.00	9
18	Schelle-Gewinde 25- 40	507436.00	9
19	Schlauch-Dampf (1/2") 13x4,1	507422.01	9
20	Winkel*3090* RG 90° i 3/4x1/2"	508507.01	9
21	Fühler Temp. D=5mm PT1000 L180	504006.08	9
22	Heizstab Schwad.app.1.2br 1500W	071489.14	9
23	Schwadenapp. kpl CO .1208 1.0	071425.55	10
24	Stellantrieb Grun 225S-230T-02-HT	506605.34	10

Baking chamber

Position number	Short descr. of the item	Item No.	Page
25	EGO STB 3pol. 1890mm Kapillar 355°C-20K	504024.30	11
26	Fühler Temp. D=5mm PT1000 L180	504006.24	11
27	Fühler-Schutzrohr 8-150	504023.01	11
28	Backofenlampe "BJB"77.707 Rahm	504544.18	11
29	Backofenlampe "BJB"77.707 Glas	504544.16	11
30	Halogenrefl.Lampe G5.3 12V 50W	504587.07	12
31	Dichtung Backofenlampe "BJB"77.707	504544.17	12
32	Fassung-Halogen GU 5,3	504588.04	12

Baking chamber

Position number	Short descr. of the item	Item No.	Page
33	Herdplatte FY co 1225x815x13	506453.13	12
34	Heizstab 440 W	070591.30	13
35	Heizstab 640 W	070590.30	13
36	Heizstab 440 W	070591.30	13
37	Heizstab 640 W	070590.30	13
38	Heizstabdichtung	070439.00	13

Baking chamber door

Position number	Short descr. of the item	Item No.	Page
39	Glasscheibe 1215x188x6 condo d	073709.20	14
40	Knopf flach mit Rändel	085273.20	14
41	Silikonlage D=25x8,5 Glastür	507171.00	14
42	Scheibe B 10.5 DIN 125-A2	501906.10	14
43	Handgriff Türhebel IG	073980.40	14
44	Drehhebel-Stange 8x69	073700.40	14

Control system

Position number	Short descr. of the item	Item No.	Page
45	Bedientableau FP8kpl anthrazit	504077.71A	15
46	BDS-Leistungsteil mit 32kByte FRAM	504078.90A	15
47	DS-Kühlkörperblock mit Triac	504078.50A	15
48	Flachbandkabel m.Stecker 300mm	504080.00	15
49	condo Verbindungskabel mit Stecker	074635.00	15
50	Federleiste 5,0 mm 3p 231-103	504451.04	16
51	Federleiste 5,0 mm 4p 231-104	504451.05	16

Electrical installation

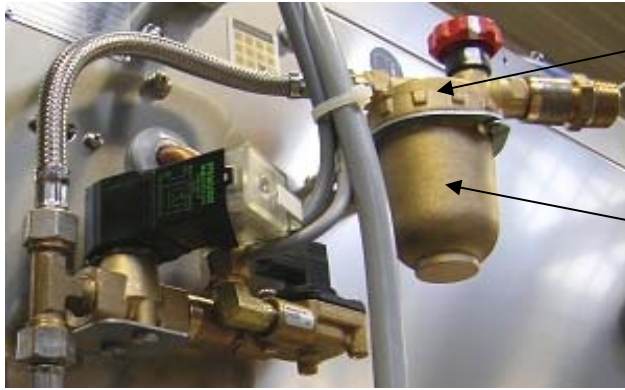
Position number	Short descr. of the item	Item No.	Page
52	Lautsprecher (Aufbau)	505224.01	17
53	Endklammer TS35 249-117	504399.00	17
54	4-L.D-Klemme 2.5 grau 280-833	504396.01	17
55	4-L.D-Klemme 2.5 blau 280-834	504397.01	17
56	4-L.PE-Klemme 2.5 gr/ge280-837	504400.01	17
57	Ringtrafo 230/208V-11.5/20V UL	505235.08	18
58	Printrelais-Sockel	504299.07	18

Electrical installation

Position number	Short descr. of the item	Item No.	Page
59	Printrelais 40.61.8.230 1W/16A	504296.00	18
60	Printrelais-Haltebügel 095.91	504300.02	18
61	RC-Modul 99.80.0 110-240VAC/DC	505255.03	18
62	Kleinschutz LC1-K0610 P72	504202.07	19
63	Sich. Autom. Moeller 1p B10 (PXL)	504347.61	19
64	Stromkreisverteiler A636T	504481.01	19
65	Sich. Autom. Moeller 1p B16 (PXL)	504348.61	20
66	Sich. Autom. Moeller 1p B10 (PXL)	504347.61	20

Accessories

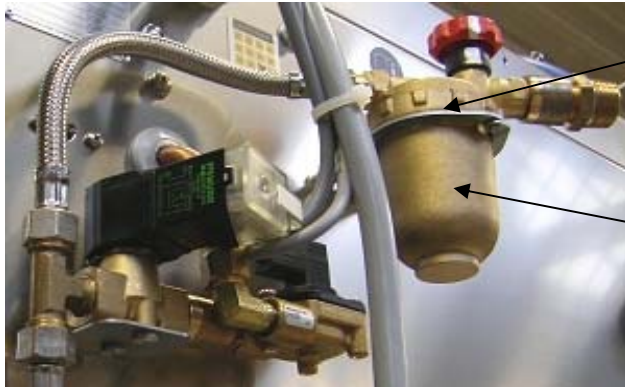
Position number	Short descr. of the item	Item No.	Page
67	Überspielkabel DS 3 pol 130cm	504073.29	21
68	Silikonkartusche Transparent	507353.00	21
69	Kaltgeräte-Einbausteckdose	504943.12	21
70	Kantenschutz schwarz 1010-02	505511.01	21
71	Silikonkartusche Hitzebeständig	507353.02	21
72	Dichtband isoTHERM ST-Band selbstklebend	505517.40	21



1



2



3



4



5



6

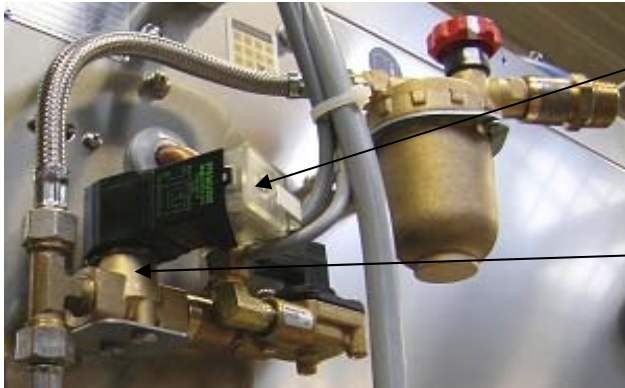


7



8





9



10



11



12



13



14



15



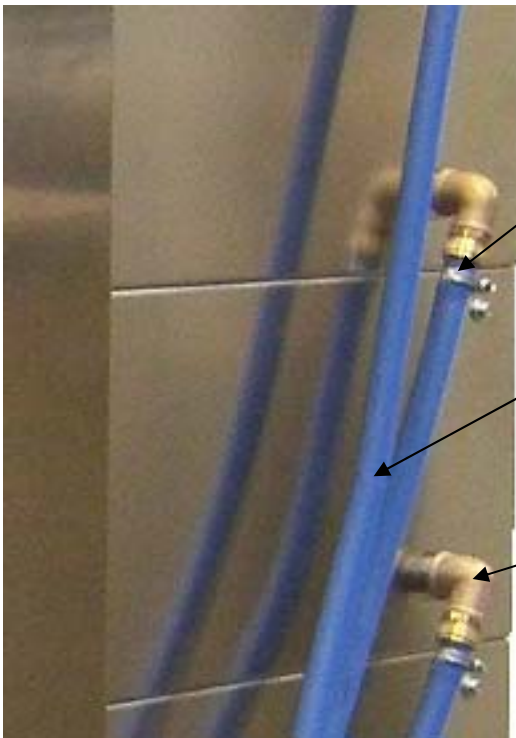


16





17



18



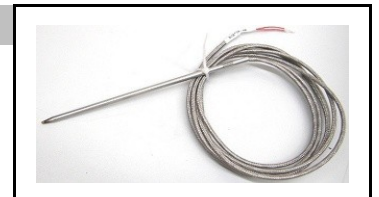
19



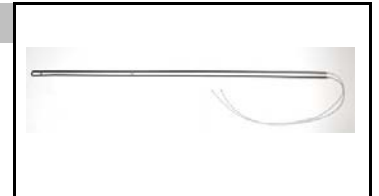
20



21



22

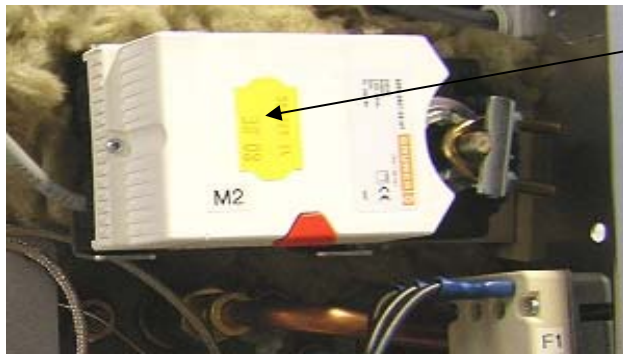




23



Steam device, complete



24

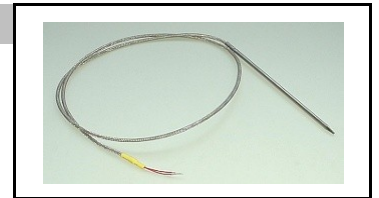




25



26



27



28



29





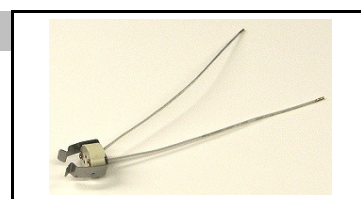
30



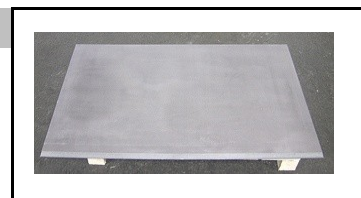
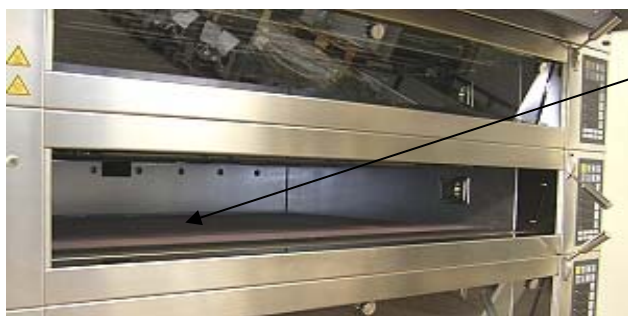
31

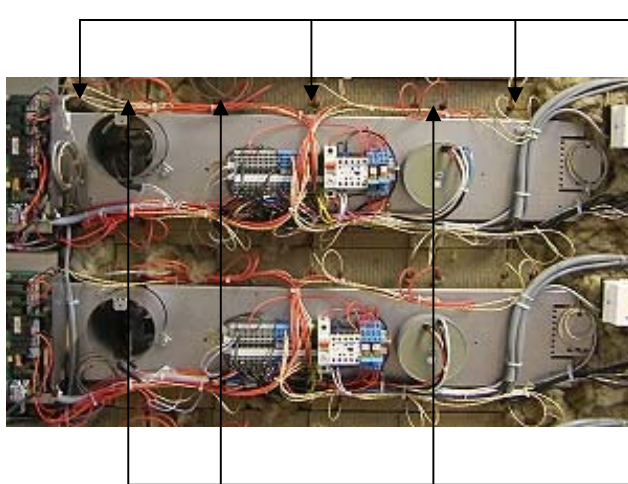


32

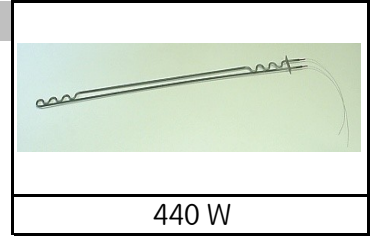


33



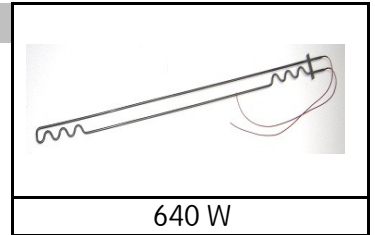


34

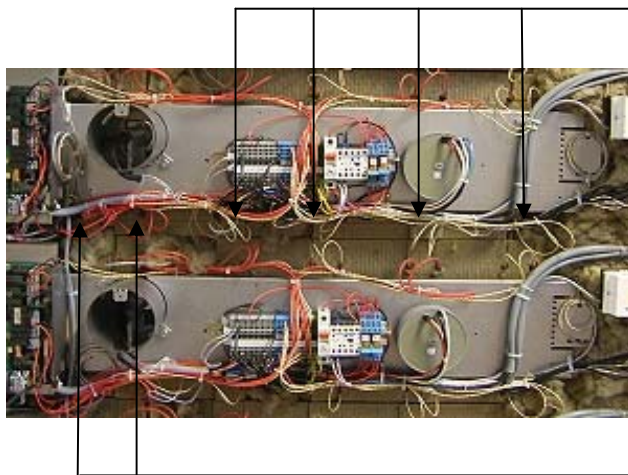


440 W

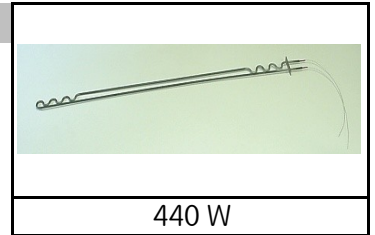
35



640 W

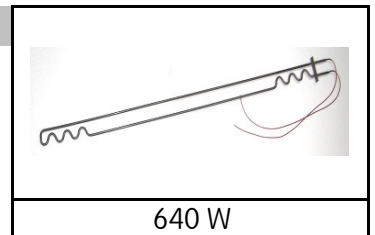


36

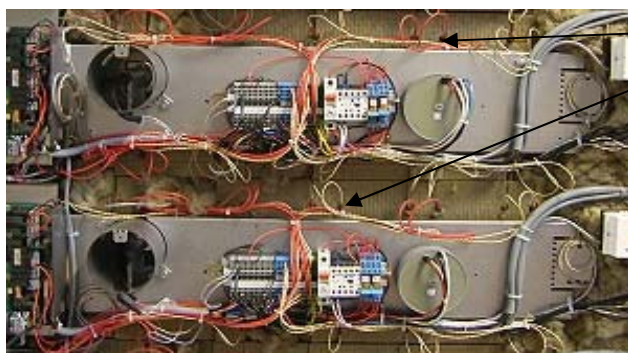


440 W

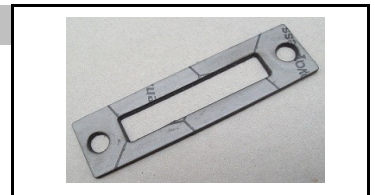
37



640 W



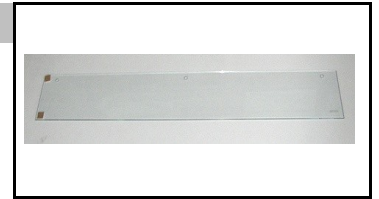
38



640 W



39



40



41



42



43

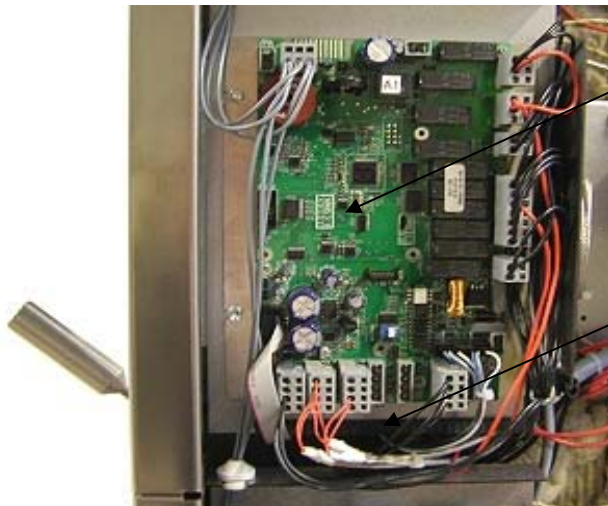


44





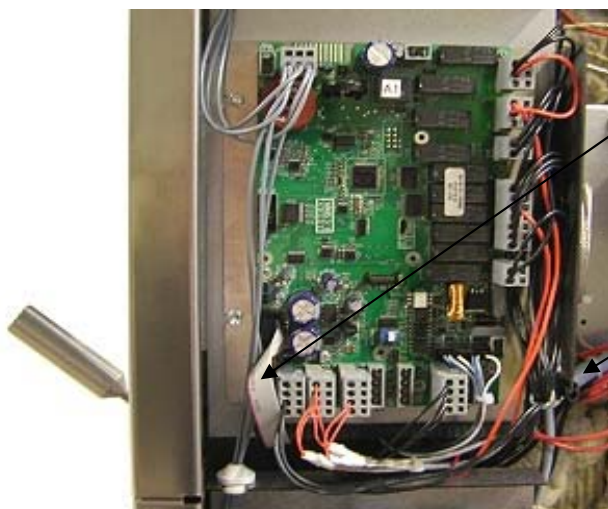
45



46



47

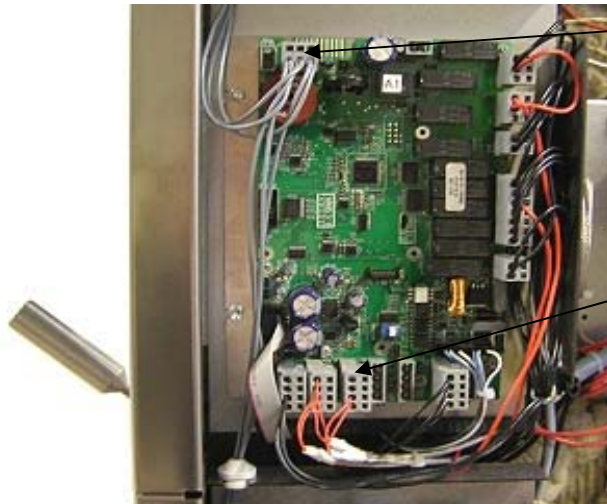


48

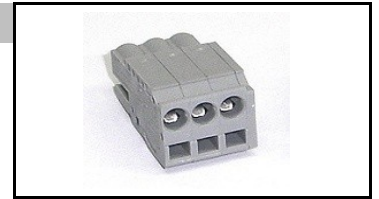


49

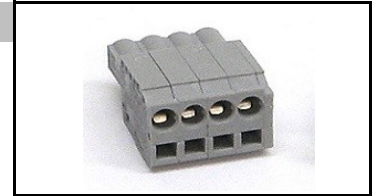


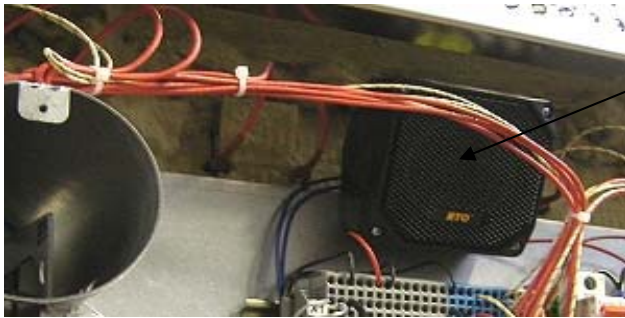


50

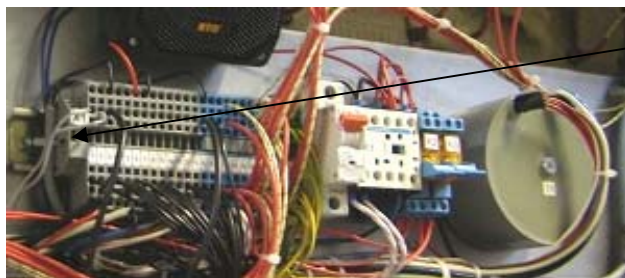


51

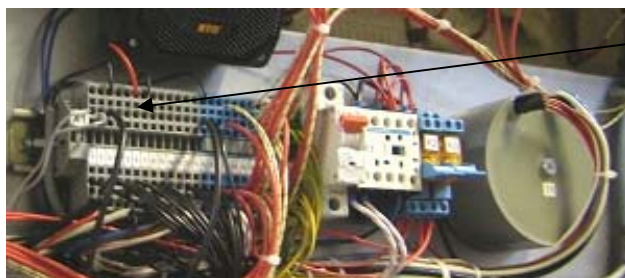




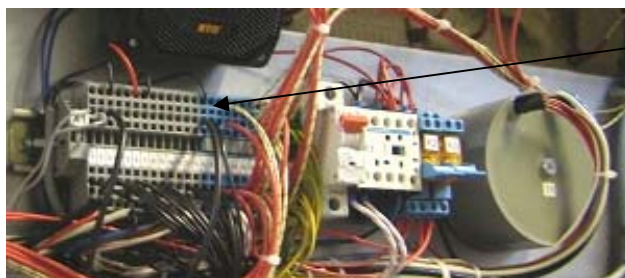
52



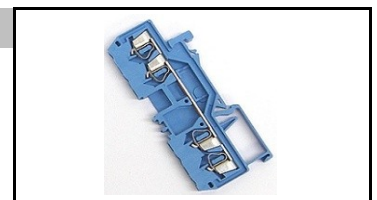
53



54

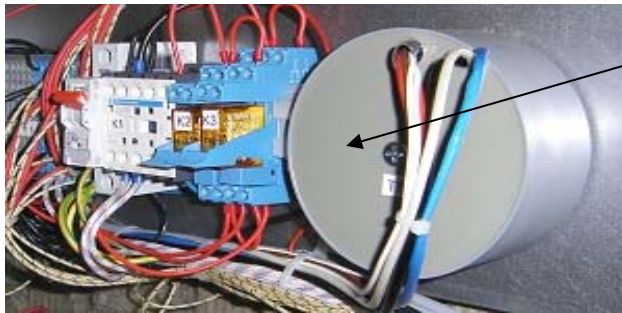


55



56





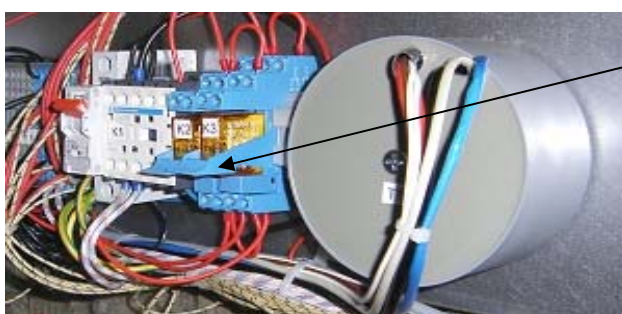
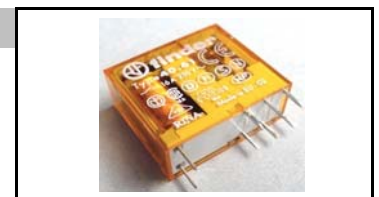
57



58



59



60



61





62



63



64





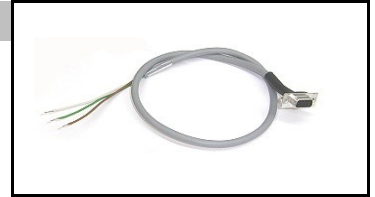
65



66



67



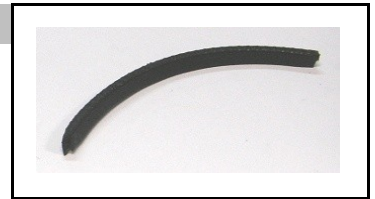
68



69



70



71



72

