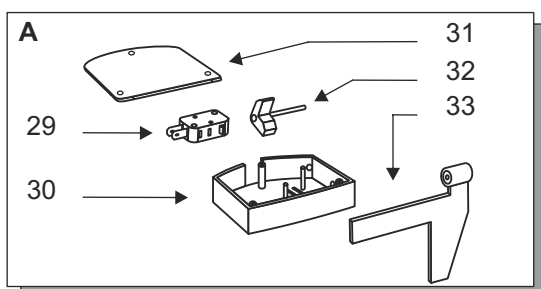
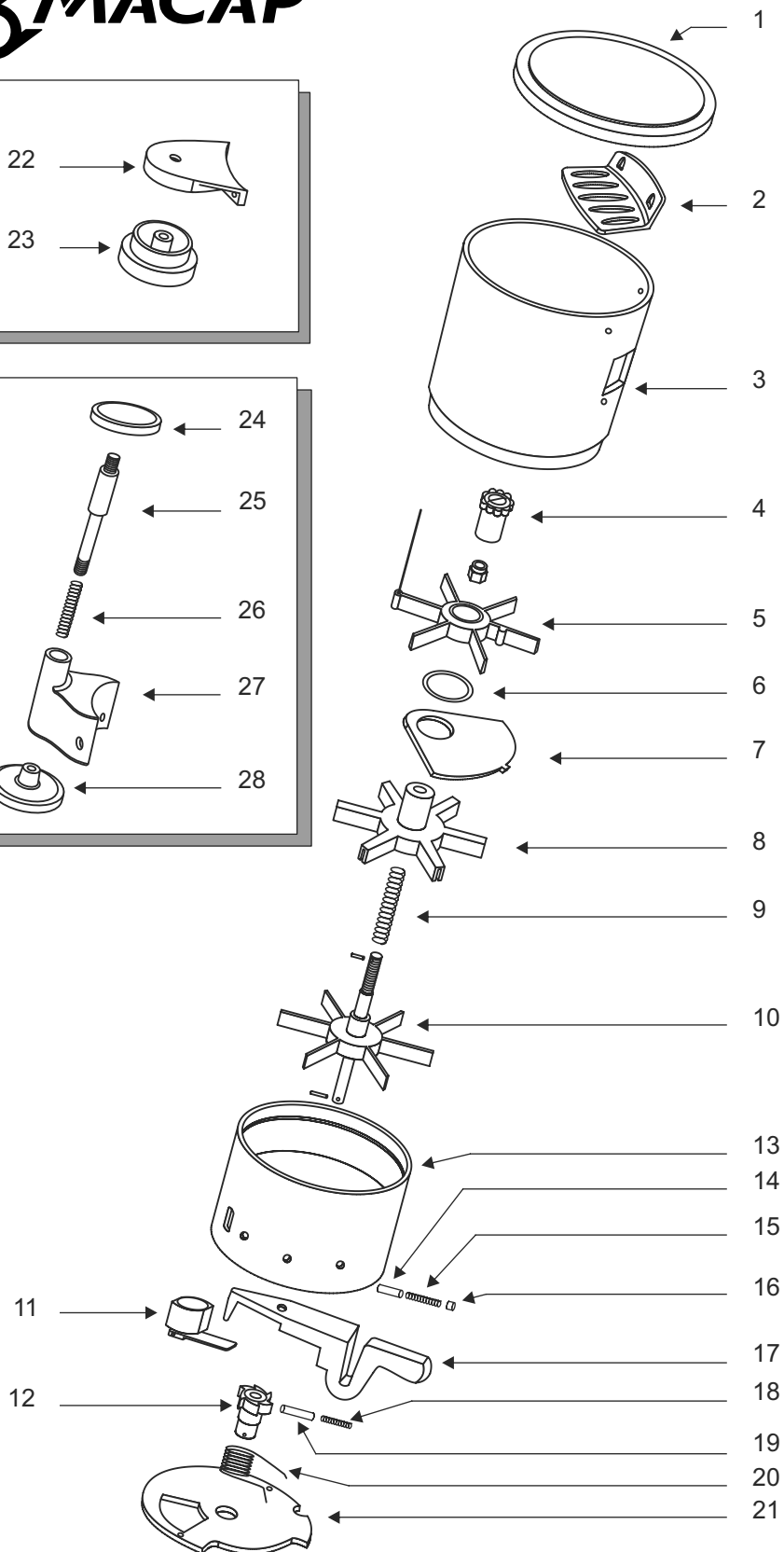
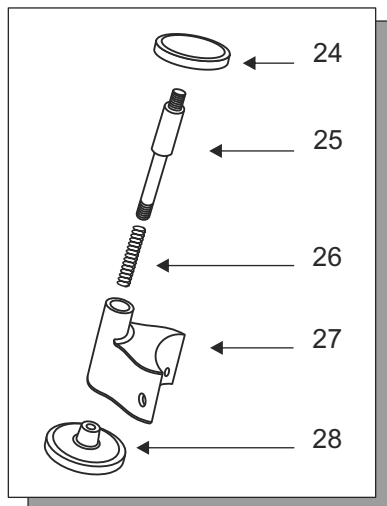
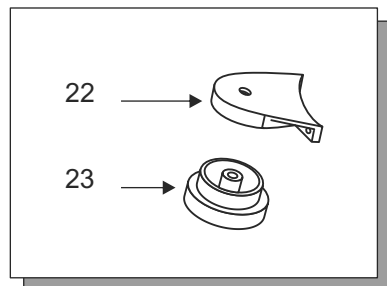


Model		
MX series (1400 rpm) DX		

Evol.	Table	Date
10	1	01/01/2010

N.	Code	Features
1	C0007M114	
2	C0007M113	
2A	C0007M101B	
2B	C0007M113A	
2C	C0007M101C	
3	C0002M101	
3A	C0007M162	
3B	C0002M101A	
4	C0004M122	
5	C0002M102	
6	C0008M109	
7	C0002M104	
8	C0001M102	
9	C00061210	230V - 50Hz
	C000612101	220V - 60Hz
	C000612102	110V - 60Hz
10	C00061107	230V - 50/60Hz
	C00061108	110V - 60Hz
11	C0004M1091	
12	C0007M1031	
13	C00061611	
14	C00061002	230V - 50/60Hz MXA
	C00061003	110V - 60Hz MXA
15	C0007M141	
16	C0001M106	MX - MXA
	C0001M106B	MXT
17	C00061021	MX
	C00061001	MXA
18	C00061517	SHUKO
	C000615171	USA
	C000615172	UK
	C000615173	SWITZERLAND
	C000615174	AUSTRALIA
	C000615175	BRAZIL
19	C0004M143	
20	C00071614	
21	C0001M114	/P
22	C00061004	MXT
23	C0004M139	
24	C0007M151	MXA

Descriptions	
	Available
	Not available
MX	Manual
MXA	Automatic
MXT	Timer
/P	Telescopic tamper



Model
MX series (1400 rpm) DX

Evol.	Table	Date
4	2	01/01/2010

N.	Code	Features
1	C0007M105	
2	C0007M110	MX - MXT
3	C0007M106	MX - MXT
	C0007M1062	MXA
4	C0007M123	
5	C0002M124	
6	C0004M110	
7	C0004M108	
8	C0002M1241	
9	C0008M108	
10	C0002M1242	
11	C0009M102	
12	C0002M106	
13	C0001M104	
14	C0004M112	
15	C0008M107	
16	C0001M138	
17	C0002M103	
18	C0008M110	
19	C0004M111	
20	C0008M102	
21	C0007M138	
22	C0007M1071	
23	C0007M102A	Ø57
	C0007M102B	Ø52
24	C0007M135A	Ø52 /P
25	C0004M127	/P
26	C0008M111	/P
27	C0007M134	/P
28	C0007M135	Ø57 /P
29	C00061019	MXA
30	C0007M148	MXA
31	C0007M147	MXA
32	C0002M132	MXA
33	C0007M150	MXA
A	C0007M139A	MXA

Descriptions

Available	
Not available	
MX	Manual
MXA	Automatic
MXT	Timer
/P	Telescopic tamper

