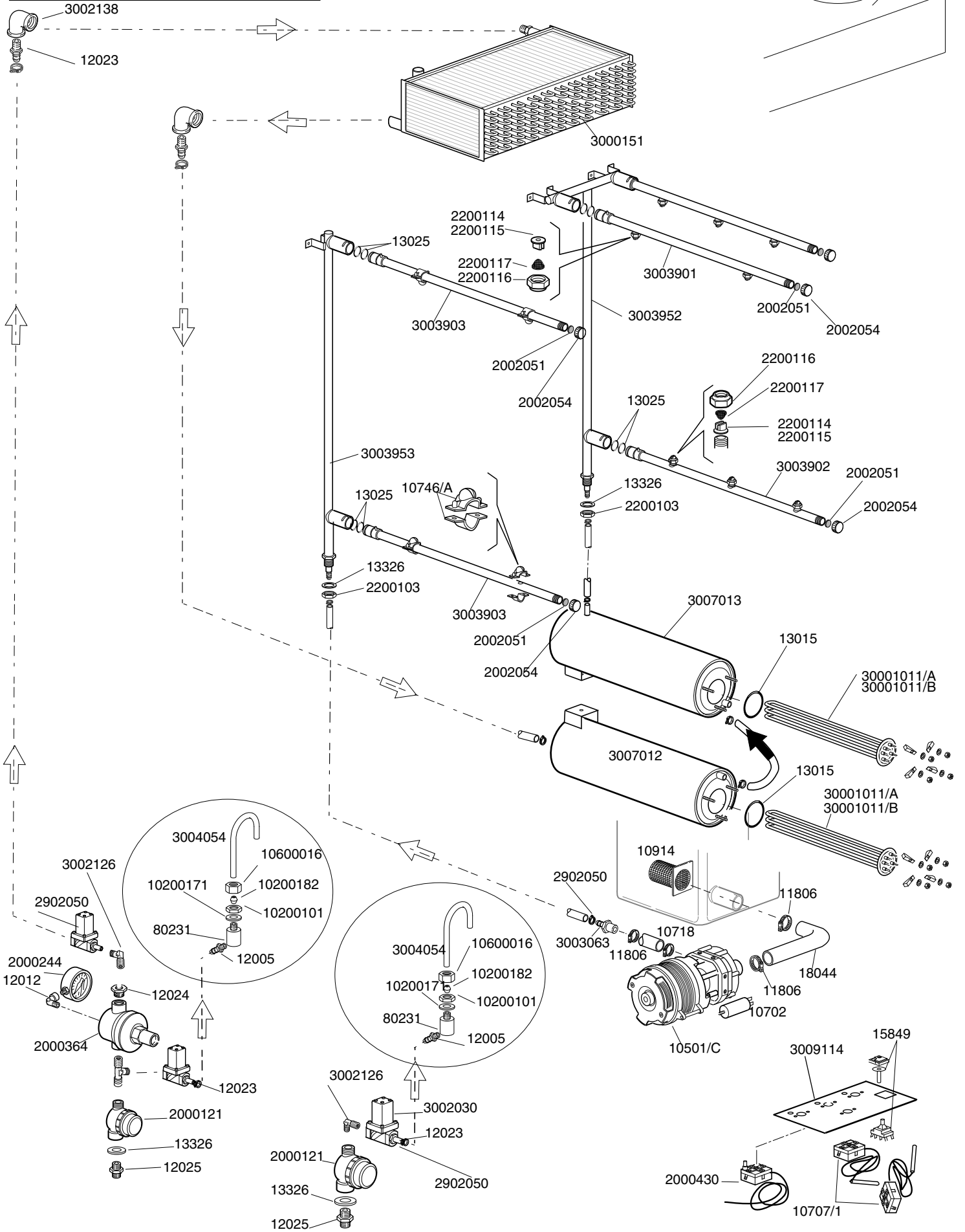


	TABLE	REV
	KI9140	02
RECUPERATORE TERM.COMPATTO K26		
COMPACT ENERGY RECOVERY K26		



HEATING RECOVERY K26

TABLE KI9140

CODE	DESCRIPTION	CODE	DESCRIPTION
10702	Condenser		
10718	36x28x75 pump elbow		
10914	Complete pump filter		
11806	25/40 clamp		
12005	Hose holder 1/4 tube d. 12		
12012	Elbow M-F 1/4		
12022	Union tee 1/2 MMM		
12023	Hose holder M 1/2		
12024	Reduction nipples 1/2 F- 3/4 M		
12025	3/4 M/M nipple		
13015	OR160 (6225) gasket		
13025	OR 2081		
13326	AM Ø38x27x2 gasket		
15849	Single switch		
18044	Pipe d.28 EPDM		
80231	Inlet fitting		
2000121	Water supply line filter 3/4"		
2000244	Pressure reduction gauge 1/4"		
2000364	Pressure reducer for filter 1/4"		
2000430	Safety thermostat		
2002051	Plug gasket		
2002054	Arm plug		
2200103	Hexagonal 3/4 nut 34x8		
2200114	Stainless steel I-C1-03/110 blade nozzle		
2200115	Stainless steel I-C1-04/110 blade nozzle		
2200116	Stainless steel 3/8F ring nut		
2200117	Filtre for rinse jet		
2902050	15-24 stainless steel clamp		
3000120	0,18KW 4P motor		
3000121	0,25KW 2P motor		
3000125	MW impeller fan		
3000151	Heating recovery battery		
3002030	OT58 1/2" solenoid valve		
3002126	3/4x1/2 M/F elbow		
3002138	F/F 1"-1/2" elbow		
3003063	Rinsing ramp reduction gear		
3003901	2 nozzle stainless steel rinsing arm		
3003902	3 nozzle stainless steel rinsing arm		
3003903	2 nozzle stainless steel pre-rinsing arm		
3003952	Right/left rinsing ramp		
3003953	Stainless steel pre-rinse ramp		
3004054	Tank water inlet pipe		
3007012	Lower boiler		
3007013	Upper boiler		
3009105	Fan pipe		
3009114	Thermostat support		
3009401	TR 98 heating recovery body		
10200101	Stainless steel 3/8 pipe union nut		
10200171	FASIT 25x17x2 gasket		
10200182	Biconic washer 12		
10600016	Stainless steel fitting nut 3/8"		
10501/C	0,10HP pump Hight-Temperature		
10707/1	0-90 thermostat		
10746/A	Nozzles with narrow fissure		
30001011/A	12KW heating element boiler		
30001011/B	14KW heating element boiler		