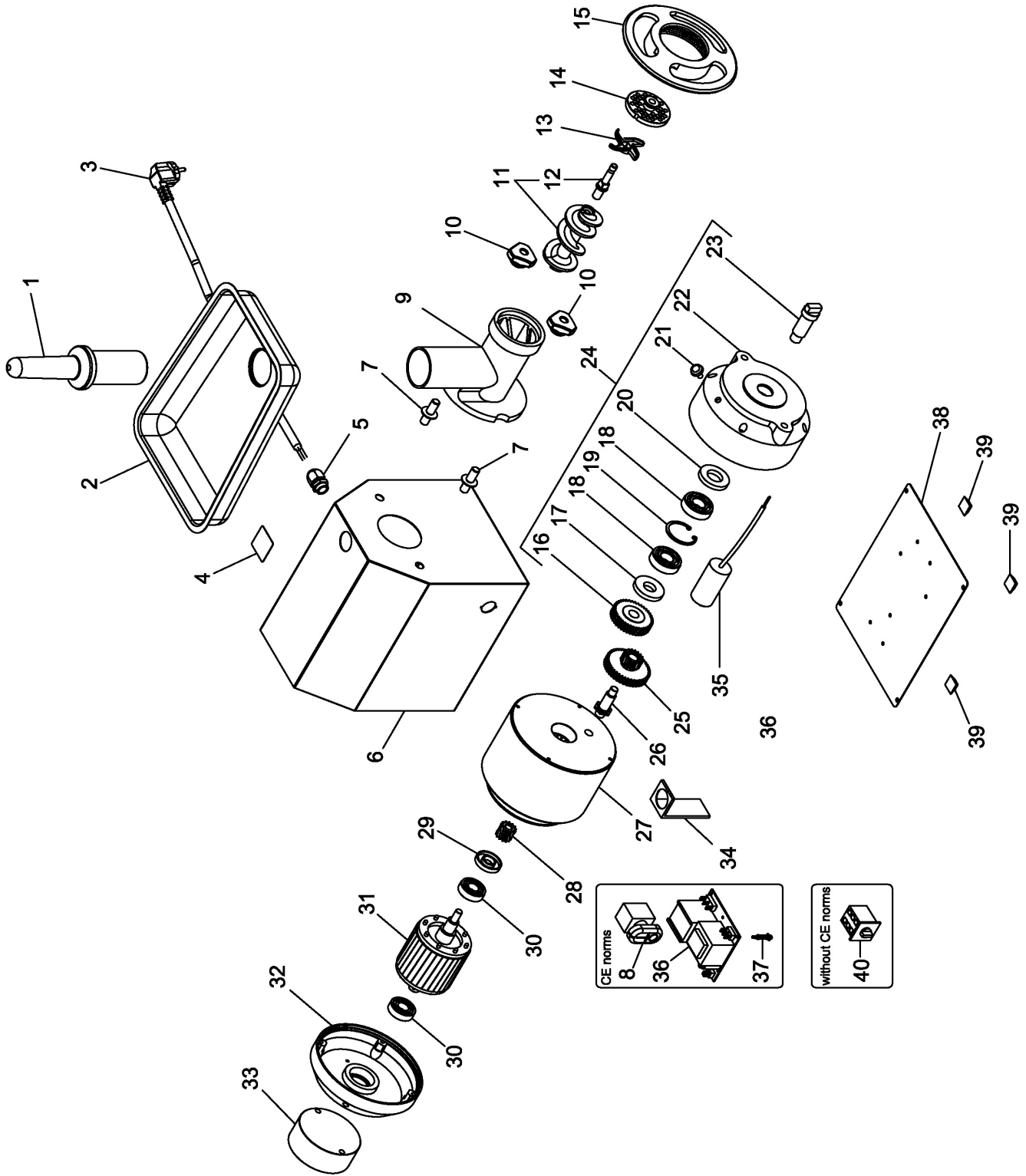


TR22CQ0



TR22CQ0

Pos. Ref.	Codice Code	Caratteristiche Features	Descrizione Description
1	SL0134	●	Pestello Pusher
2	SL0135		Tramoggia Hopper
3	SL1841	3Ph+Gnd	Cavo elettrico Electric cable
3	SL1671	1Ph+N+Gnd	Cavo elettrico Electric cable
4	SL3104		Etichetta Label
5	SL1668	PG11	Pressacavo Cable clamp
6	SL3041		Carcassa Housing
7	SL3102		Perno Pivot
8	SL0891	● Start-stop	Pulsante Push button
9	SL3986	Stainless-steel	Bocchettone Sleeve
9	SL2523R0	Food stuff treated cast-iron (without CE norms)	Bocchettone Sleeve
9	SL3987	Unger	Bocchettone Sleeve
10	SL2924	●	Pomello Knob
11	SA5500	● Stainless-steel	Elica Screw shaft
11	SA5400	Food stuff treated cast-iron (without CE norms)	Elica Screw shaft
11	SA5700	Unger	Elica Screw shaft
12	SL0823		Perno Pivot
12	SL0824	Unger	Perno Pivot
13	///////	●	Coltello Cutter
14	///////	●	Piastra Plate
15	SL0197	Stainless-steel	Volantino Handwheel
15	SL3328R0	Aluminium (without CE norms)	Volantino Handwheel
16	SL0130		Ingranaggio Gear
17	SL2593	ø20xø47x8	Paraolio Oil seal
18	SL3125	6204 2RS	Cuscinetto Bearing
19	SL0082	ø47	Seeger Seeger
20	SL2591	ø25xø47x8	Paraolio Oil seal
21	SL2709	●	Tappo Tap
22	SL3112		Calotta Calotte
23	SL2528		Albero Shaft
24	SA1320	Assembly	Calotta Calotte
25	SL0125		Ingranaggio Gear
26	SL2589		Albero Shaft
27	SA1016	400V/3Ph/50Hz	Statore Stator
27	SA1017	230V/1Ph/50Hz	Statore Stator
28	SL0128		Ingranaggio Gear
29	SL0127	ø17xø40x8	Paraolio Oil seal
30	SL0131	6203 2RS	Cuscinetto Bearing
31	SL2600	400V/3Ph/50Hz	Rotore Rotor
31	SL2601	230V/1Ph/50Hz	Rotore Rotor
32	SL0186		Calotta Calotte
33	SL3082		Distanziale Spacer
34	SL0176		Staffa Bracket
35	SL0931	20µF	Condensatore Condenser
36	SL0883	●	Scheda elettronica Electronic card
37	SL3020		Distanziale Spacer
38	SL3049		Fondo Bottom
39	3178340		Piedino Foot
40	SL0054		Interruttore Switch

(*) : fuori produzione / out of production

● : ricambio consigliato / spare part suggested