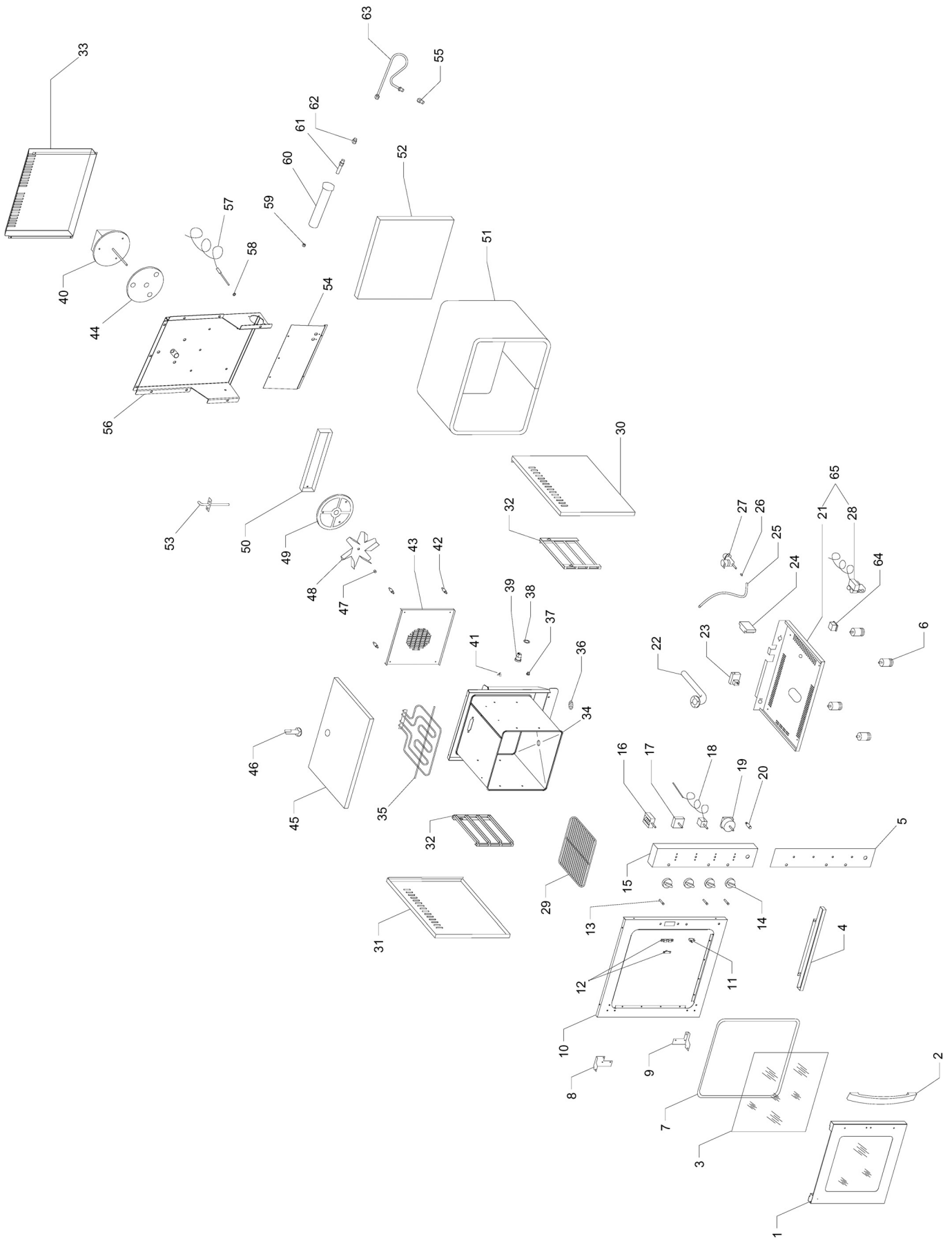


# FN423G-GV-M-MV



**FN423G-GV-M-MV**

Pos. Ref.	Codice Code	Caratteristiche Features	Descrizione Description	
1	CO0812	Assembly	Sportello	Door
2	CO0813		Maniglia	Handle
3	CO0814		Vetro	Glass
5	SL3816	(FN423G-M)	Etichetta	Label
5	SL3793	(FN423GV-MV)	Etichetta	Label
6	CO0815		Piedino	Foot
7	CO0816		Guarnizione	Gasket
11	CO0817	●	Microinterruttore	Microswitch
12	CO0818		Aggancio	Coupling
13	32W3280	230V 2W white	Lampada	Lamp
14	SL3550		Pomello	Knob
16	CO0819		Selettore	Selector
17	CO0821	(FN423GV-MV)	Potenzimetro	Trimmer
18	CO0822	●	Termostato	Thermostat
19	CO0823	●	Timer	Timer
20	CO0824	Reset	Pulsante	Push button
21	CO5263		Fondo	Bottom
24	CO0825		Scatola	Box
27	CO0826	Water (FN423GV-MV)	Elettrovalvola	Electro-valve
28	CO5131	Gas - LPG	Elettrovalvola	Electro-valve
28	CO5133	Gas - Methane	Elettrovalvola	Electro-valve
29	CO5038		Griglia	Grill
30	CO3844		Fianco destro	Right side
31	CO5493		Fianco sinistro	Left side
32	CO0829		Supporto	Support
35	CO0832	● 1800W	Resistenza	Resistance
37	CO0833		Perno	Pivot
40	CO0834	230V/1Ph/50Hz	Motore	Motor
44	CO0835		Disco	Disk
45	CO5500		Coperchio	Cover
48	CO0836		Ventola	Fan
49	CO0837		Disco	Disk
57	CO0838		Candela	Ignition plug
59	CO0839	M5	Dado	Nut
60	CO0840		Brucciato gas	Gas burner
61	CO0841	ø1,55	Ugello metano	Methane nozzle
61	CO0842	ø1,00	Ugello GPL	LPG nozzle
63	CO0843		Tube	Tube
64	CO0844		Relay	Relay
65	CO5132	Kit - Gas (LPG) - 17/06/10 f.p.(*)	Elettrovalvola	Electro-valve
65	CO5134	Kit - Gas (Methane) - 17/06/10 f.p.(*)	Elettrovalvola	Electro-valve

(\*): fuori produzione / out of production

● : ricambio consigliato / spare part suggested