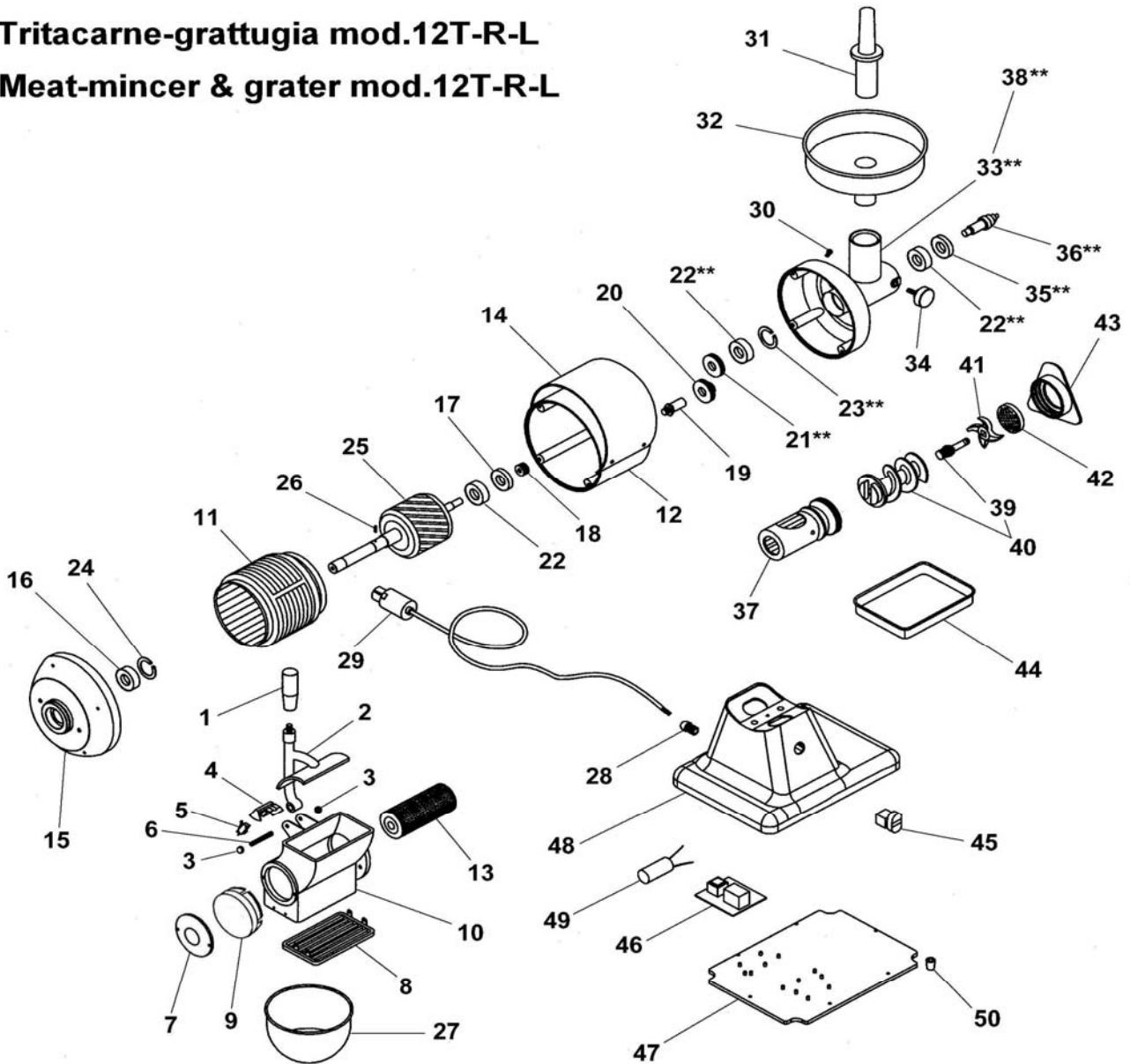


Tritacarne-grattugia mod.12T-R-L
Meat-mincer & grater mod.12T-R-L



** : Assemblato / Assembly

TRITACARNE-GRATTUGIA MOD.12T-R-L MEAT-MINCE & GRATER MOD.12T-R-L

Rif No	Codice Code		Caratteristiche Characteristics	Descrizione Description
1	SL0106	☺		Impugnatura Grip
2	SL0201			Pressore Lever press
2	SL0107		01/09/99 f.p.(*)	Pressore Lever press
3	SL0108		M8	Dado Nut
4	SL0882			Supporto Support
5	SL0885	☺		Micrinterruttore Microswitch
6	SL0258		M8x60	Prigioniero Stud
7	SL2833			Coperchio Cover
8	SL1452		01/01/04 f.p.(*)	Griglia Grid
9	SL2573			Tappo Tap
10	SL0203			Bocca Casing
10	SL0112		01/09/99 f.p.(*)	Bocca Casing
11	SL0183		400V/3Ph/50Hz	Statore Stator
11	SL0122		230V/1Ph/50Hz	Statore Stator
12	SL0146			Carcassa Housing
12	SL0123		01/04/00 f.p.(*)	Carcassa Housing
13	SA5200			Rullo Roller
14	SL0181			Copertura Covering
15	SL0117			Calotta Calotte
16	SL0118		6205 ZZ	Cuscinetto Bearing
17	SL0127		17x40x7	Paraolio Oil seal
18	SL0128			Ingranaggio Gear
19	SL0124			Albero Shaft
20	SL0125			Ingranaggio Gear
21	SL0130			Ingranaggio Gear
22	SL0131		6203 2RS	Cuscinetto Bearing
23	SL0132		ø40	Seeger Seeger
24	SL0119		ø52	Seeger Seeger
25	SA6700		400V/3Ph/50Hz	Rotore Rotor
25	SA6600		230V/1Ph/50Hz	Rotore Rotor
26	SL0121		ø5x10	Spina Pin
27	SL0174		(R-T)	Recipiente Container
27	SL0175		(L)	Recipiente Container
28	SL1052		PG11	Pressacavo Cable clamp
29	SL1841		3Ph+Gnd	Cavo elettrico Electric cable
29	SL1671		1Ph+N+Gnd	Cavo elettrico Electric cable
30	SL2917	☺		Tappo Tap
30	SL0133		18/09/03 f.p.(*)	Tappo Tap
31	SL0134	☺		Pestello Pusher
32	SL0135		(R-L)	Tramoggia Hopper
32	SL0136		(T)	Tramoggia Hopper
33	SL3000			Bocchettone Sleeve
34	SL0138	☺		Pomello Knob
35	SL0139		25x40x7	Paraolio Oil seal
36	SL0140			Albero Shaft
37	SL0142			Bocchettone Sleeve
38	SA3700		Assembly	Bocchettone Sleeve
39	SL2521			Perno Pivot
39	SL0822		10/06/02 f.p.(*)	Perno Pivot
40	SA5300	☺		Elica Screw shaft
40	SA5100		01/01/00 f.p.(*)	Elica Screw shaft
41	//////////	☺		Coltello Cutter
42	//////////	☺		Piastra Plate
43	SL0171			Volantino Handwheel
44	SL0180		(R-T)	Recipiente Container
45	SL0891	☺		Pulsante Push button
46	SL0883	☺		Scheda elettronica Electronic card
47	SL2651		(R-T)	Fondo Bottom
47	SL0268		15/10/04 f.p.(*) (R-T)	Fondo Bottom
47	SL0226		(L)	Fondo Bottom
48	SL2988		(R-T)	Base Base
48	SL0178		15/10/04 f.p.(*) (R-T)	Base Base
48	SL0179		(L)	Base Base
49	SL0177		16µF	Condensatore Condenser
50	SL0235			Piedino Foot

(*): fuori produzione / out of production

☺ : ricambio consigliato / spare part suggested