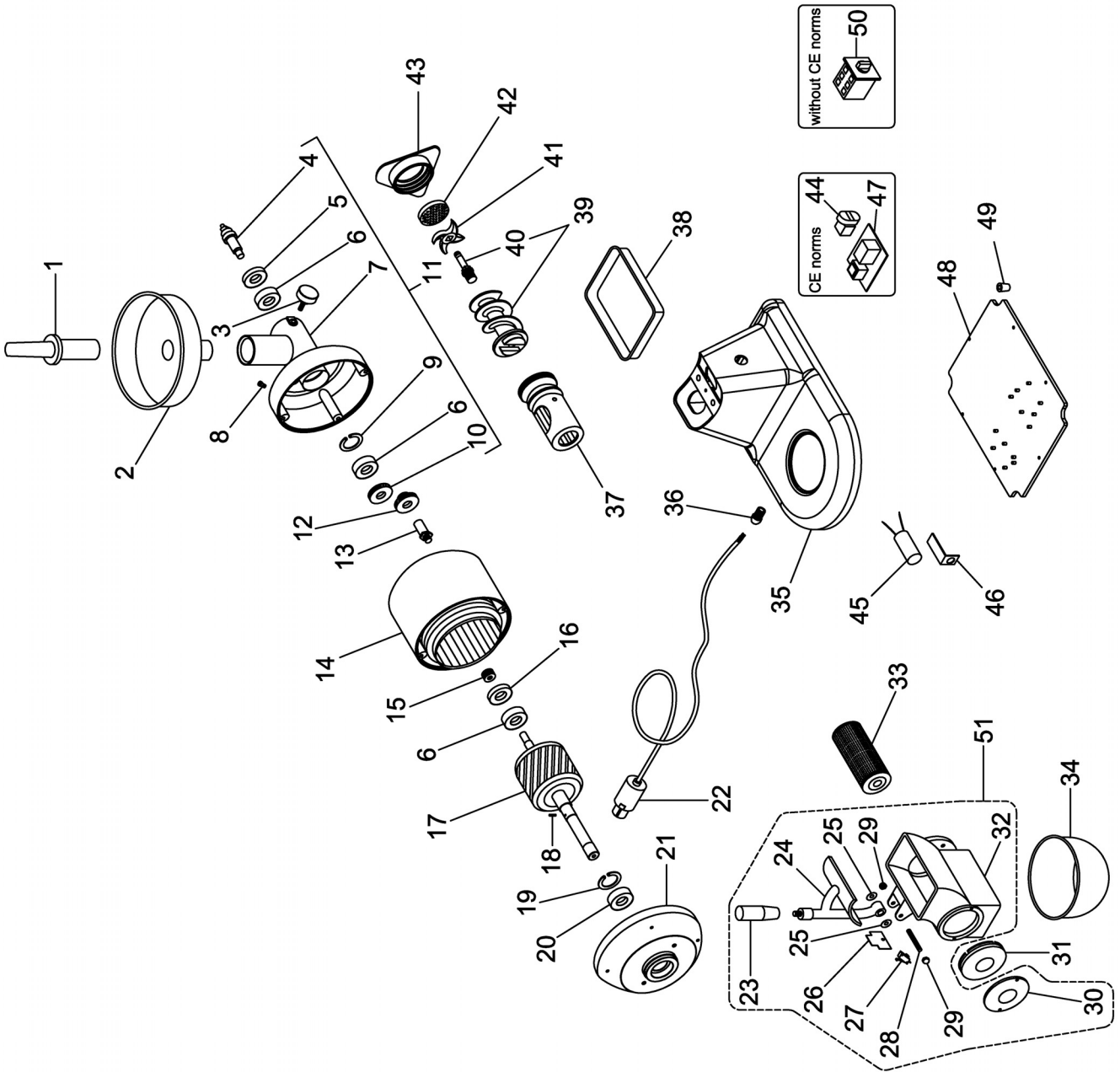


AB12T-LQ0



AB12T-LQ0

| Pos. Ref. | Codice Code | | Caratteristiche Features | Descrizione Description | |
|-----------|-------------|---|------------------------------|-------------------------|-----------------|
| 1 | SL0134 | ● | | Pestello | Pusher |
| 2 | SL0136 | | (AB12T) | Tramoggia | Hopper |
| 2 | SL0135 | | (AB12L) | Tramoggia | Hopper |
| 3 | SL0138 | ● | | Pomello | Knob |
| 4 | SL0140 | | | Albero | Shaft |
| 5 | SL0139 | | ∅25x∅40x7 | Paraolio | Oil seal |
| 6 | SL0131 | | 6203 2RS | Cuscinetto | Bearing |
| 7 | SL3980 | | | Bocchettone | Sleeve |
| 8 | SL2917 | ● | | Tappo | Tap |
| 9 | SL0132 | | ∅40 | Seeger | Seeger |
| 10 | SL0130 | | | Ingranaggio | Gear |
| 11 | SA3710 | | Assembly | Bocchettone | Sleeve |
| 12 | SL0125 | | | Ingranaggio | Gear |
| 13 | SL0124 | | | Albero | Shaft |
| 14 | SA1014 | | 400V/1Ph/50Hz | Statore | Stator |
| 14 | SA1015 | | 230V/1Ph/50Hz | Statore | Stator |
| 15 | SL0128 | | | Ingranaggio | Gear |
| 16 | SL0127 | | ∅17x∅40x7 | Paraolio | Oil seal |
| 17 | SA6700 | | 400V/1Ph/50Hz | Rotore | Rotor |
| 17 | SA6600 | | 230V/1Ph/50Hz | Rotore | Rotor |
| 18 | SL0121 | | ∅5x10 | Spina | Pin |
| 19 | SL0119 | | ∅52 | Seeger | Seeger |
| 20 | SL0118 | | 6205 2RS | Cuscinetto | Bearing |
| 21 | SL0117 | | | Calotta | Calotte |
| 22 | SL1841 | | 3Ph+Gnd | Cavo elettrico | Electric cable |
| 22 | SL1671 | | 1Ph+N+Gnd | Cavo elettrico | Electric cable |
| 23 | SL0106 | ● | | Impugnatura | Grip |
| 24 | SA1113 | | | Pressore | Lever press |
| 25 | SL3140 | | | Rosetta | Washer |
| 26 | SL3138 | | | Copertura | Covering |
| 27 | SL0885 | ● | | Microinterruttore | Microswitch |
| 28 | SL0258 | | | Prigioniero | Stud |
| 29 | SL0108 | | | Dado | Nut |
| 30 | SL2833 | | | Coperchio | Cover |
| 31 | SL2573 | | | Tappo | Tap |
| 32 | SA1012 | | Assembly | Bocca | Casing |
| 33 | SA2800 | | | Rullo | Roller |
| 34 | SL0174 | | (AB12T) | Recipiente | Container |
| 34 | SL0175 | | (AB12L) | Recipiente | Container |
| 35 | SL2988 | | (AB12T) | Base | Base |
| 35 | SL0179 | | (AB12L) | Base | Base |
| 36 | SL1668 | | PG11 | Pressacavo | Cable clamp |
| 37 | SL0142 | | Stainless-steel | Bocchettone | Sleeve |
| 37 | SL3078 | | Food stuff treated steel | Bocchettone | Sleeve |
| 38 | SL0180 | | (AB12T) | Recipiente | Container |
| 38 | SL0175 | | (AB12L) | Recipiente | Container |
| 39 | SA5300 | ● | Stainless-steel | Elica | Screw shaft |
| 39 | SA5350 | | Food stuff treated cast-iron | Elica | Screw shaft |
| 40 | SL2521 | | | Perno | Pivot |
| 41 | /////// | ● | | Coltello | Cutter |
| 42 | /////// | ● | | Piastra | Plate |
| 43 | SL0171 | | Stainless-steel | Volantino | Handwheel |
| 43 | SL3327R0 | | Aluminium | Volantino | Handwheel |
| 44 | SL0891 | ● | Start-stop | Pulsante | Push button |
| 45 | SL0177 | | 16µF | Condensatore | Condenser |
| 46 | SL0176 | | | Staffa | Bracket |
| 47 | SL0883 | ● | | Scheda elettronica | Electronic card |
| 48 | SL2651 | | (AB12T) | Fondo | Bottom |
| 48 | SL0226 | | (AB12L) | Fondo | Bottom |
| 49 | SL0235 | | | Piedino | Foot |
| 50 | SL0054 | | | Interruttore | Switch |
| 51 | SA1119 | | Assembly | Bocca | Casing |

(*): fuori produzione / out of production

● : ricambio consigliato / spare part suggested