

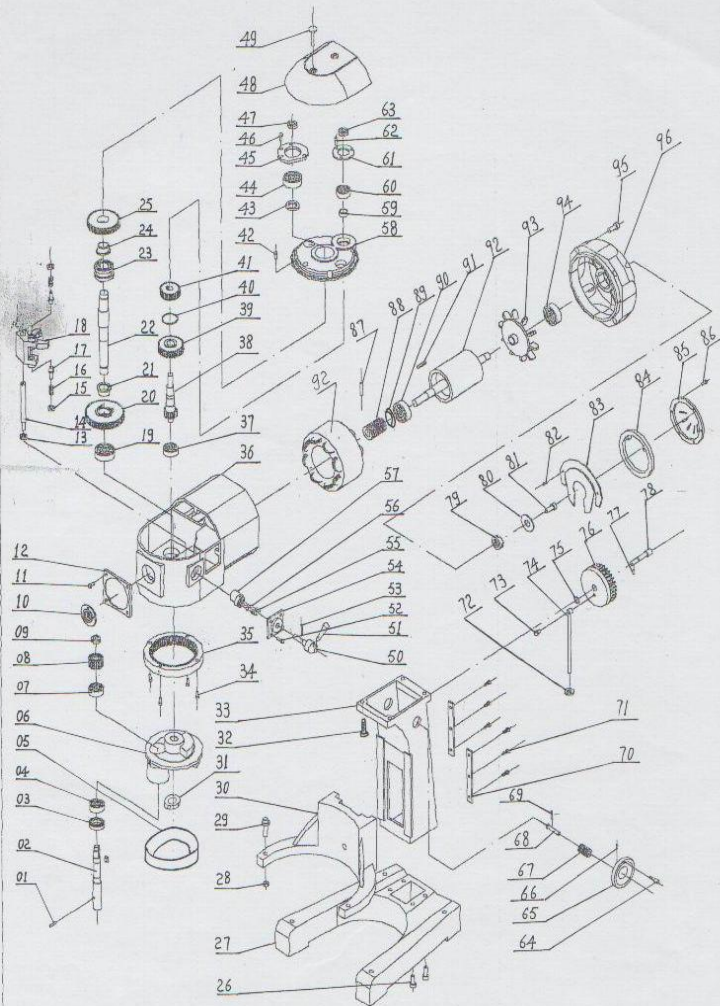
B10,B15 SPARE PARTS LISTING

NO.	CODE	NAME	QUANTITY
1	GB119-86 A6×26	COLUMN PIN	1
2	VFM-10-1-14	PLANETARY SHAFT	1
3	FB20×40×7	OIL SEAL	1
4	GB292-83 6203	SLIDING BEARING	1
5	VFM-10-1-12	OIL STOCK PLATE	1
6	VFM-10-1-13	PLANETARY SHELF	1
7	GB292-83 6203	SLIDING BEARING	1
8	VFM-10-1-11	PLANETARY GEAR	1
9	M12×1.5	ROUNG NUT	1
10	VFM10-1-16	SIGN	1
11	M5×10	SCREW	4
12	VFM-10-1-15	FRONT COVER	1
13	M8	NUT	1
14	VFM-10-1-45	SHIFTING FORK SHAFT	1
15	VFM-10-1-43	NUT	2
16	GB2089-80 2×10×15	COMPRESSION SPRING	2
17	VFM-10-1-42	PIN	2
18	VFM-10-1-44	SHIFTING FORK	1
19	GB292-83 6204	SLIDING BEARING	1
20	VFM-10-1-08	GEAR B	1
21	VFM-10-1-09	DISTANCE SLEEVE B	1
22	VFM-10-1-22	PRINCIPAL AXIS	1
23	VFM-10-1-07	COG CLUTCH	1
24	VFM-10-1-04	DISTANCE SLEEVE A	1
25	VFM-10-1-05	GEAR A	1
26	M8×25	HEX SCREW	4

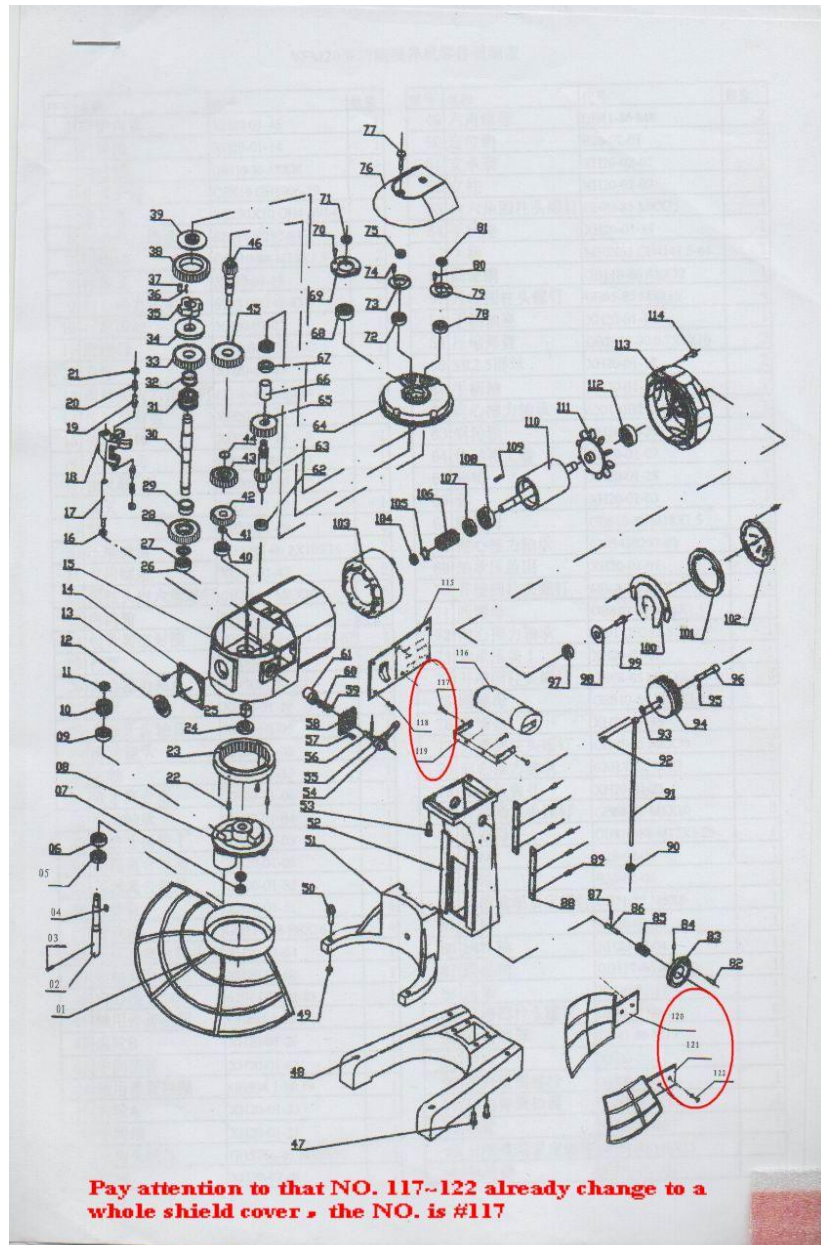
NO.	CODE	NAME	QUANTIT
27	VFM-10-3-09	BASE	1
28	M6	NUT	2
29	VFM-10-3-08	LOCATION PIN	2
30	VFM-10-3-07	BRACKET	1
31	M18×1.5	ROUNG NUT	2
32	M8×30	INNER-HEX SCREW	4
33	VFM-10-3-06	VERTICAL SHAFT	1
34	M6×20	INNER-HEX SCREW	4
35	VFM-10-1-10	ANNULAR GEAR	1
36	VFM-10-1-36	TRANSMISSION BOX BODY	1
37	GB292-83 6204	SLIDING BEARING	1
38	VFM-10-1-35	MIDDLE SHAFT	1
39	VFM-10-1-33	WORM WHEEL	1
40	GB8941-86 19	CIRCLIP FOR SHAFT	1
41	VFM-10-1-32	GEAR C	1
42	GB70-85 M6×20	SCREW	4
43	VFM-10-1-04	DISTANCE SLEEVE	1
44	GB292-83 6204	SLIDING BEARING	1
45	VFM-10-1-02	THE GLAND 1 OF PRINCIPAL AXIS	1
46	GB67-85 M6×16	SCREW	3
47	M18×1.5	ROUNG NUT	1
48	VFM-10-1-01	DECORATIVE	1
49	VFM-10-1-29	SPECIAL SCREW	2
50	VFM-10-1-27	HANDLE	1
51	VFM-10-1-20	HANDLE BASE	1

NO.	CODE	NAME	QUANTITY
52	GB/T65-85 M5×14	SCREW	4
53	GB117-86 A3×24	SPLIT PIN	1
54	VFM-10-1-19	BASE OF THE HANDLE	1
55	GB2089-80 0.7×4×10	COMPRESSION SPRING	2
56	GB308-89 5	STEEL BALL	2
57	VFM-10-1-18	ECCENTRIC WHEEL	1
58	VFM-10-1-03	THE UPPER COVER OF TRANSMISSION BOX	1
59	VFM-10-1-31	DISTANCE SLEEVE F	1
60	GB292-83 6201	SLIDING BEARING	1
61	VFM-10-1-30	BEARING GLAND 11	1
62	M5×10	SCREW	3
63	M18×1.5	ROUNG NUT	1
64	VFM-10-3-14A	HANDLE OF HANDWHEEL	1
65	VFM-10-3-14B	HANDWHEEL	1
66	M4×20	SET SCREW	1
67	VFM-10-3-15	SLEEVE	1
68	VFM-10-3-16	LIFTING WORM SHAFT	1
69	4	PIN	1
70	VFM-10-2-02	PRESS PLATE	2
71	M6×15	SCREW	6
72	M6	NUT	1
73	M6×25	SCREW	1
74	VFM-10-2-05	PULL ROD	1
75		CIRCLIP FOR SHAFT	1
76	VFM-10-3-17	WORM WHEEL	1

装配示意图
(VFM-10多功能搅拌机)



NO.	CODE	NAME	QUANTITY
77	4	SPLIT PIN	1
78	VFM-10-3-18	LIFTING WORM SHAFT	1
79	L17-15Y	CENTRIFUGAL SWITCH	1
80	5	BIG WASHER	1
81	M5×20	SCREW	1
82	M4×8	SCREW	2
83	L17-15Y	CENTRIFUGAL SWITCH CHIP	1
84	VFM-10-3-12	FIXED PLATE	1
85	VFM-10-3-11	PLASTIC COVER	1
86	M5×20	CROSS RECESSED PAN HEAD SCREW	4
87	GB117-86 A3×28	PIN	2
88	VFM-10-1-34	WORM	1
89	FB20×35×7 GB8877.1	OIL SEAL	1
90	GB229-83 6203	SLIDING BEARING	1
91	4×23 GB1096-79	PARALLEL KEY	1
92	VFM-10-1-37	MOTOR	1
93	VFM-10-1-23	FAN	1
94	GB229-83 6203	SLIDING BEARING	1
95	GB70-85 M6×30	INNER-HEX SCREW	4
96	VFM10-1-41	REAR COVER	1



B20 AND B30 SPARE PARTS LISTING

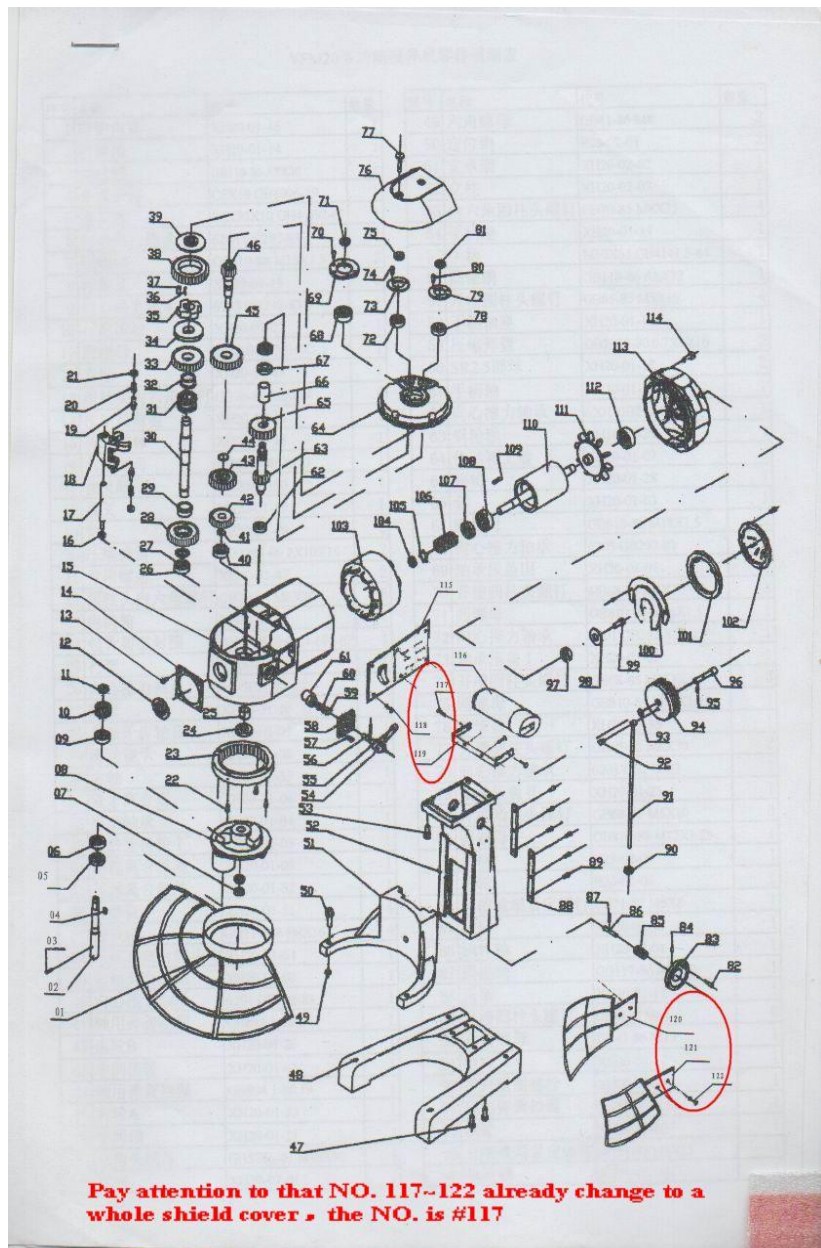
NO.	CODE	NAME	QUANTITY
1	XH20-01-46	SHIELD	1
2	XH20-01-14	BEATER SHAFT	1
3	GB119-86 A8×30	COLUMN PIN	1
4	C5×18 GB1096-79	PARALLEL KEY	1
5	25×50×10 GH4-692-	SEALING RING	1
6	6204 GB292-83	RADIAL THRUST BEARING	1
7	GB810-88 M18×1.5	ROUND NUT	2
8	XG20-01-13	PLANETARY SHELF	1
9	6203 GB292-83	RADIAL THRUST BEARING	1
10	XH20-01-27	PLANETARY GEAR	1
11	GB8140-88 M16×1.5	ROUND NUT	1
12	XH20-01-45	BRAND	1
13	GB70-85 M6×14	INNER-HEX COLUMN	4
14	XH20-01-43	FRONT COVER OF THE TRANSMISSION BOX	1
15	XH20-01-33	TRANSMISSION BODY	1
16	GB6170-86 M10	HEX NUT	1
17	XH20-01-50	SHIFTING FORK SHAFT	1
18	XH20-01-49	SHIFTING FORK	1
19	XH20-01-48	PIN	2
20	GB2088-80 2×10×15	COMPRESSION SPRING	2
21	XH20-01-47	SPECIAL SCREW PLUG	2
22	GB70-85 M6×30	INNER-HEX COLUMN	6
23	XH20-01-12	INNER GEAR	1
24	30×45×10 GH4-692-	SEALING RING	1
25	XH20-01-11	BUSHING	1

NO.	CODE	NAME	QUANTIT
26	6205GB292-83	RADIAL THRUST BEARING	1
27	XH20-01-10	DISTANCE SLEEVE	1
28	XH20-01-09	COGWHEEL II	1
29	XH20-01-08	SLIDING BEARING	1
30	XH20-01-53	PRINCIPAL AXIS	1
31	XH20-01-06	COG CLUTCH	1
32	XH20-01-04	SLIDING BEARING	1
33	XH20-01-05	COGWHEEL I	1
34	XH20-01-03	OVERRUNNING CLUTCH BASE	1
35	XH20-01-52	OVERRUNNING CLUTCH BODY	1
36	XH20-01-51	FLAT SPRING	4
37	GB119-86 B8×16	COLUMN PIN	4
38	XH20-01-54	GEAR WITH OVERRUNNING CLUTCH	1
39	XH20-01-02	OVERRUNNING CLUTCH COVER	1
40	6201 GB292-83	RADIAL THRUST BEARING	1
41	GB894.1-86 17	CIRCLIP FOR SHAFT	1
42	XH20-01-26	GEAR B	1
43	XH20-01-62	MIDDLE GEAR	1
44	GB894.1-86 19	CIRCLIP FOR SHAFT	1
45	XH20-01-23	GEAR A	1

NO.	CODE	NAME	QUANTITY
46	XH20-01-21	MIDDLE SHAFT	1
47	GB5786-81 M10×70	HEX NUT	4
48	XH20-02-01	BASE	1
49	GB41-86 M8	HEX NUT	2
50	B25-02-01	LACATION PIN	2
51	XH20-02-02	BEARING SUPPORT	1
52	XH20-02-03	VERTICAL SHAFT	1
53	GB70-85 M8×35	INNER-HEX COLUMN	4
54	XH20-01-19	HANDLE BASE	1
55	M10×63 GB4141.5-84	HANDLE BASE	1
56	GB119-86 A8×32	COLUMN PIN	1
57	GB65-85 M5×16	SLOTTED ROUND-HEAD	4
58	XH20-01-18	HANDLE SHAFT BASE	1
59	GB2089-80 0.7×4×10	COMPRESSION SPRING	2
60	XH20-01-17	BALL WITH 2.5 STERADIAN	2
61	XH20-01-15	HANDLE SHAFT	1
62	6201 GB292-83	RADIAL THRUST BEARING	1
63	XH20-01-24	WORM GEAR SHAFT	1
64	XH20-01-07	TOP COVER OF THE TRANSMISSION BOX	1
65	XH20-01-28	WORM GEAR	1

NO.	CODE	NAME	QUANTIT
66	XH20-01-63	SLEEVE	1
67	GB810-88 M18×1.5	ROUND NUT	2
68	6203 GB292-83	RADIAL THRUST BEARING	1
69	XH20-01-01	BEARING GLAND III	1
70	GB68-85 M6×10	SLOTTED ROUND-HEAD SCREW	3
71	GB810-88 M16×1.5	ROUND NUT	1
72	6201 GB292-83	RADIAL THRUST BEARING	1
73	XH20-01-22	BEARING GLAND I	1
74	GB68-85 M15×1.5	SLOTTED ROUND-HEAD SCREW	3
75	GB810-88 M12×1.25	ROUND NUT	1
76	XH20-01-35	DECORATIVE	1
77	GB65-85 M6×30	SLOTTED ROUND-HEAD SCREW	2
78	6201 GB292-83	RADIAL THRUST BEARING	1
79	XH20-01-25	BEARING GLAND II	1
80	GB68-85 M5×10	SLOTTED ROUND-HEAD SCREW	3
81	GB810-88 M12×1.25	ROUND NUT	1
82	B25-02-09	HANDLE	1

NO.	CODE	NAME	QUANTITY
83	B25-02-06	HANDLE WHEEL	1
84	GB71-85 M5×8	SLOTTED SET SCREW WITH CONE POINT	1
85	XH20-02-05	WORM	1
86	XH20-02-04	WORM SHAFT	1
87	GB117-86 A3×20	TAPER PIN	1
88	XH20-02-13	HOLD-DOWN STRIP	1
89	GB68-85 M6×20	SLOTTED ROUND-HEAD SCREW	6
90	GB41-86 M10	HEX NUT	1
91	XH20-02-12	PULL ROD	1
92	XH20-02-11	PULL ROD FASTENING BOLT	1
93	GB8941-86 14	CIRCLIP FOR SHAFT	1
94	XH20-02-09	WORM GEAR	1
95	GB71-85 M6×15	SLOTTED ROUND-HEAD SCREW	1
96	XH20-02-10	WORM GEAR SHAFT	1
97		CENTRIFUGAL AUTOMATIC SWITCH	1
98	XH20-01-56	SHAFT END RETAINING RING	1
99	GB65-85 M5×14	SLOTTED ROUND-HEAD	1



NO.	CODE	NAME	QUANTITY
100	XH20-01-64	CENTRIFUGAL SWITCH CHIP	1
101	XH20-01-65	FIXED PLATE	1
102	XH20-01-32	WIND-LEAD COVER	1
103	XH20-01-38	MOTOR STATOR	1
104	GB810-88 M16×1.5	ROUND NUT	1
105	GB858-88 16	LOCK WASHER FOR ROUNG NUT	1
106	XH20-01-20	DRIVING WORM	1
107	30×45×10 GH4-692-	SEALING RING	1
108	6205 GB292-83	RADIAL THRUST BEARING	1
109	C4×28 GB896-79	PARALLEL KEY	1
110	XH20-01-37	MOTOR ROTOR	1
111	XH20-01-57	FAN	1
112	6205 GB292-83	RADIAL THRUST BEARING	1
113	XH20-01-31	REAR COVER OF THE TRANSMISSION BOX	1
114	GB70-85 M6×50	INNER-HEX COLUMN	4
115	XH20-03-01	CONTROL PANEL	1
116	XH20-03-02	CAPACITANCE	1
117	M5×10	SCREW	4
118	M4×410	SCREW	6
119	XH20-03-03	CAPACITANCE SUPPORT	1
120	XH20-03-04	LEFT SHIELD COVER	1
121	XH20-03-05	RIGHT SHIELD COVER	1
122	M5×12	SCREW	4